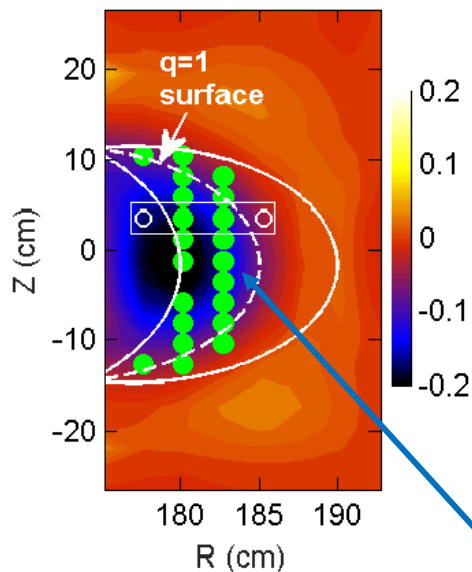


Localized modulation of \tilde{T}_e by island (M. Jiang, EX-P5-4)

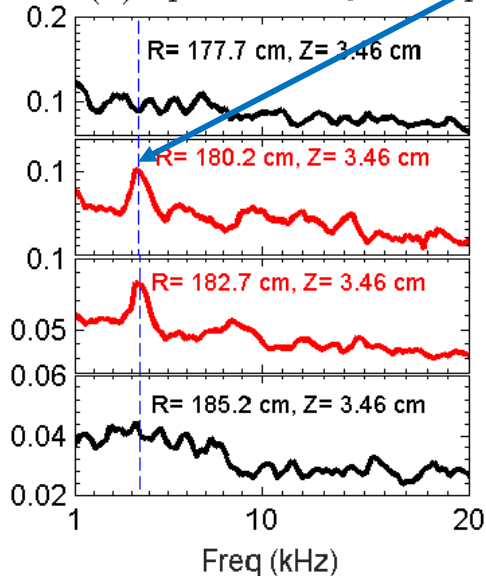
(a) Modulation area



Large T_e gradient

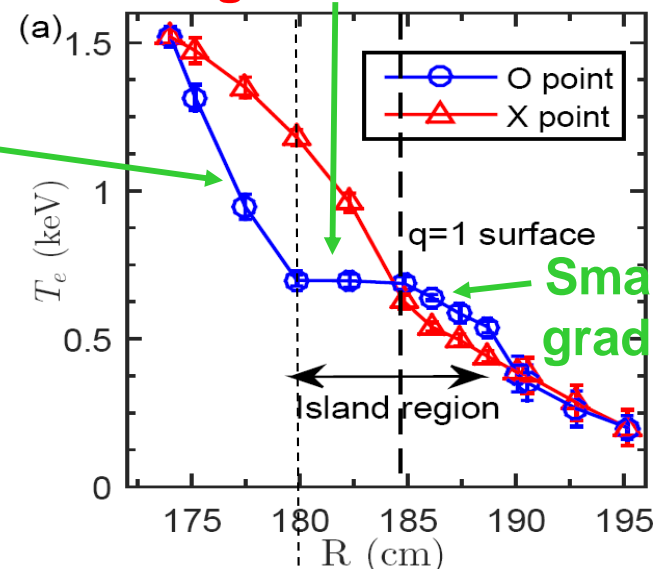
Modulation of \tilde{T}_e by rotating 1/1 island only occurred at inner half island.

(b) Spectra of \tilde{T}_e envelope



High power fluctuations (turbulence spreading)

Nearly zero T_e gradient



Small T_e gradient

