

MISCELLANEOUS BRACHYTHERAPY

Alfredo Polo MD, PhD
Division of Human Health
International Atomic Energy Agency



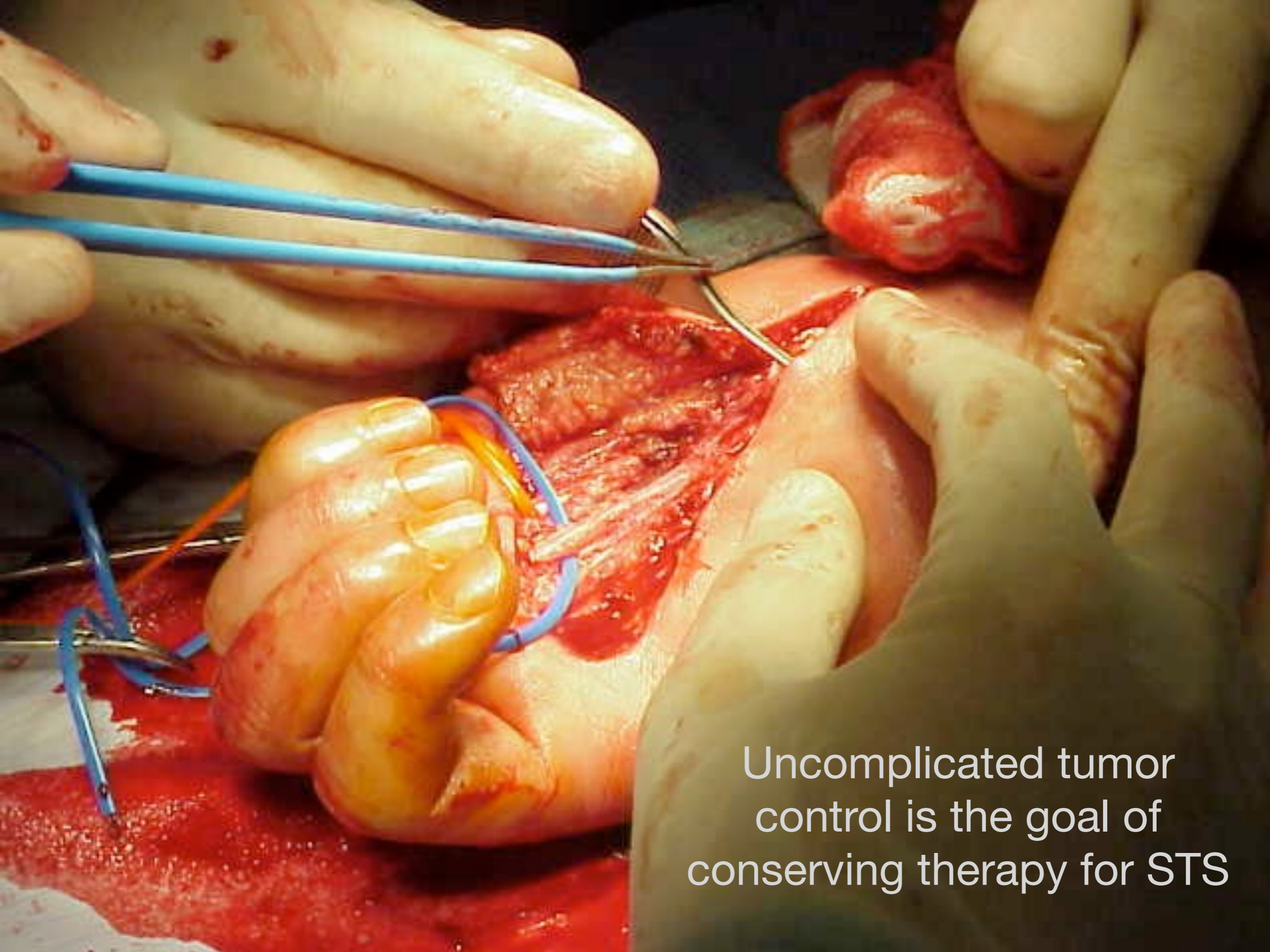
IAEA

60 Years

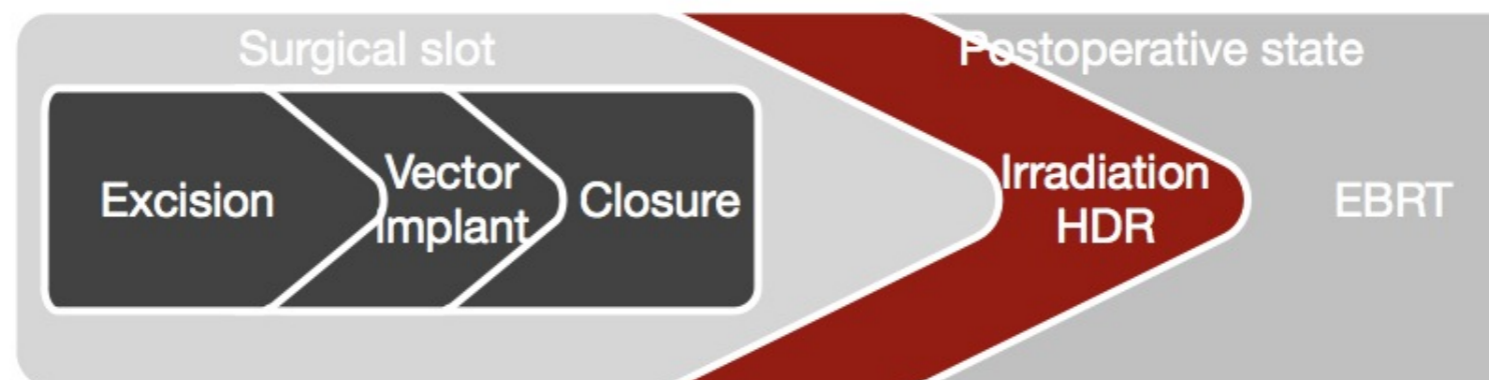
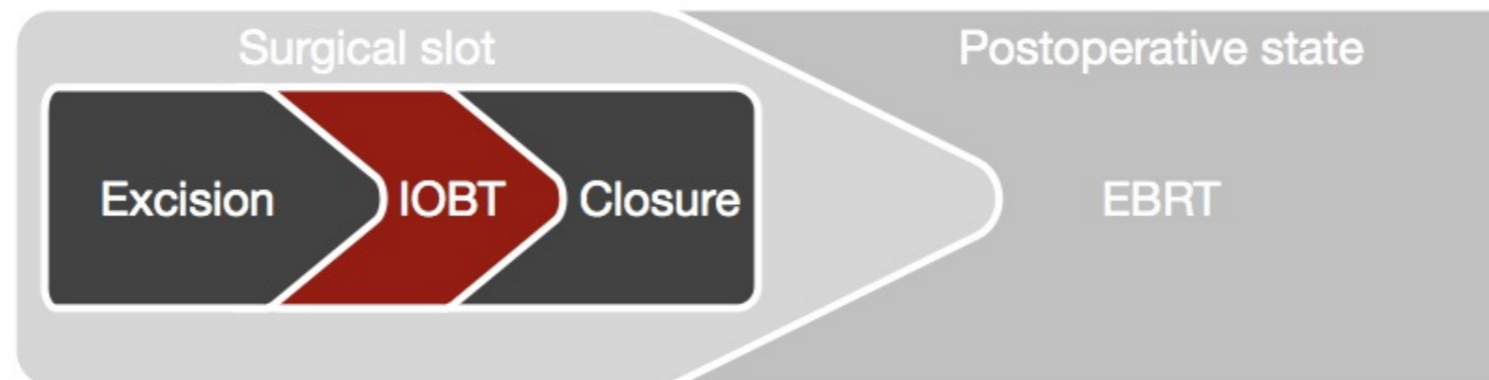
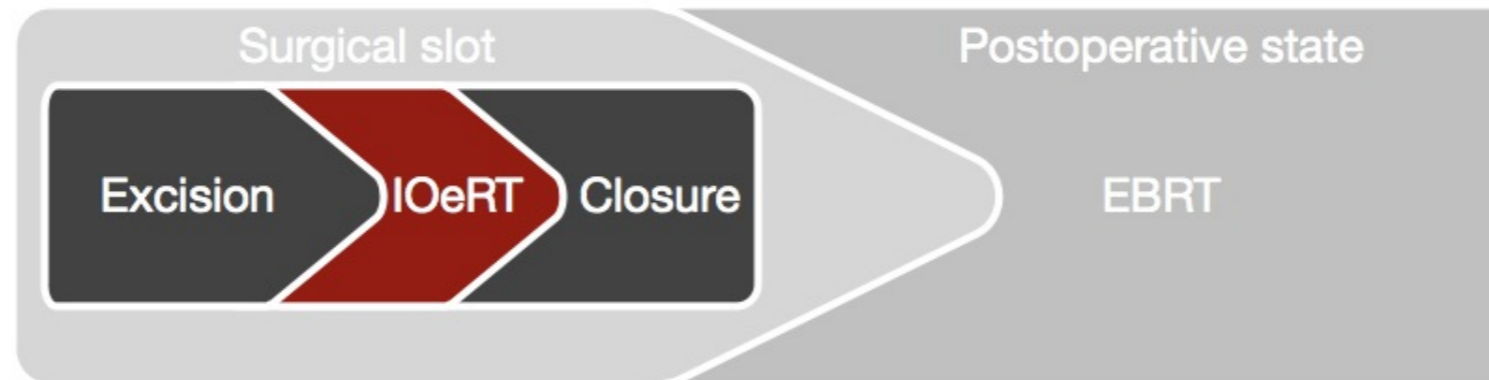
Atoms for Peace and Development

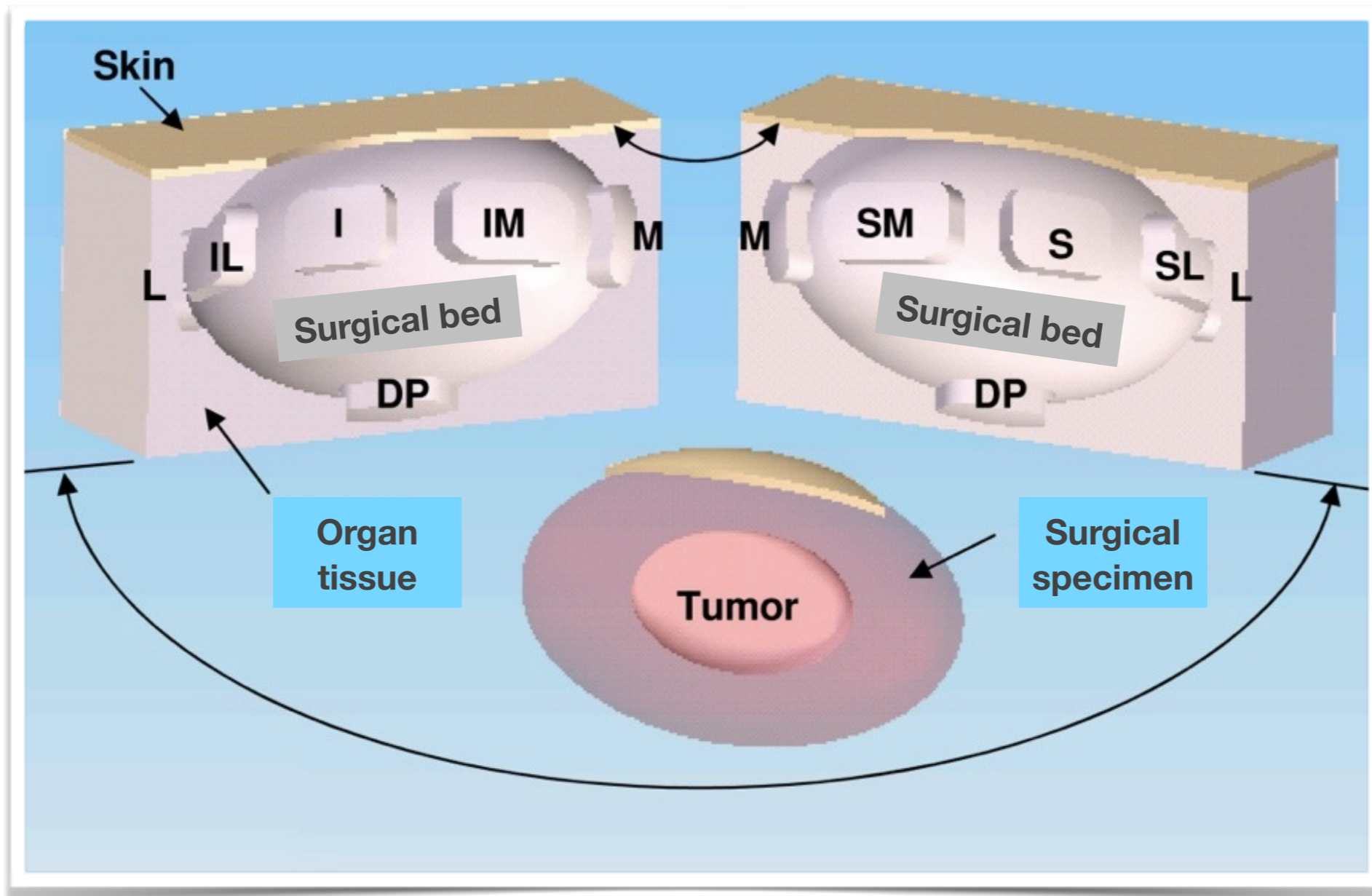


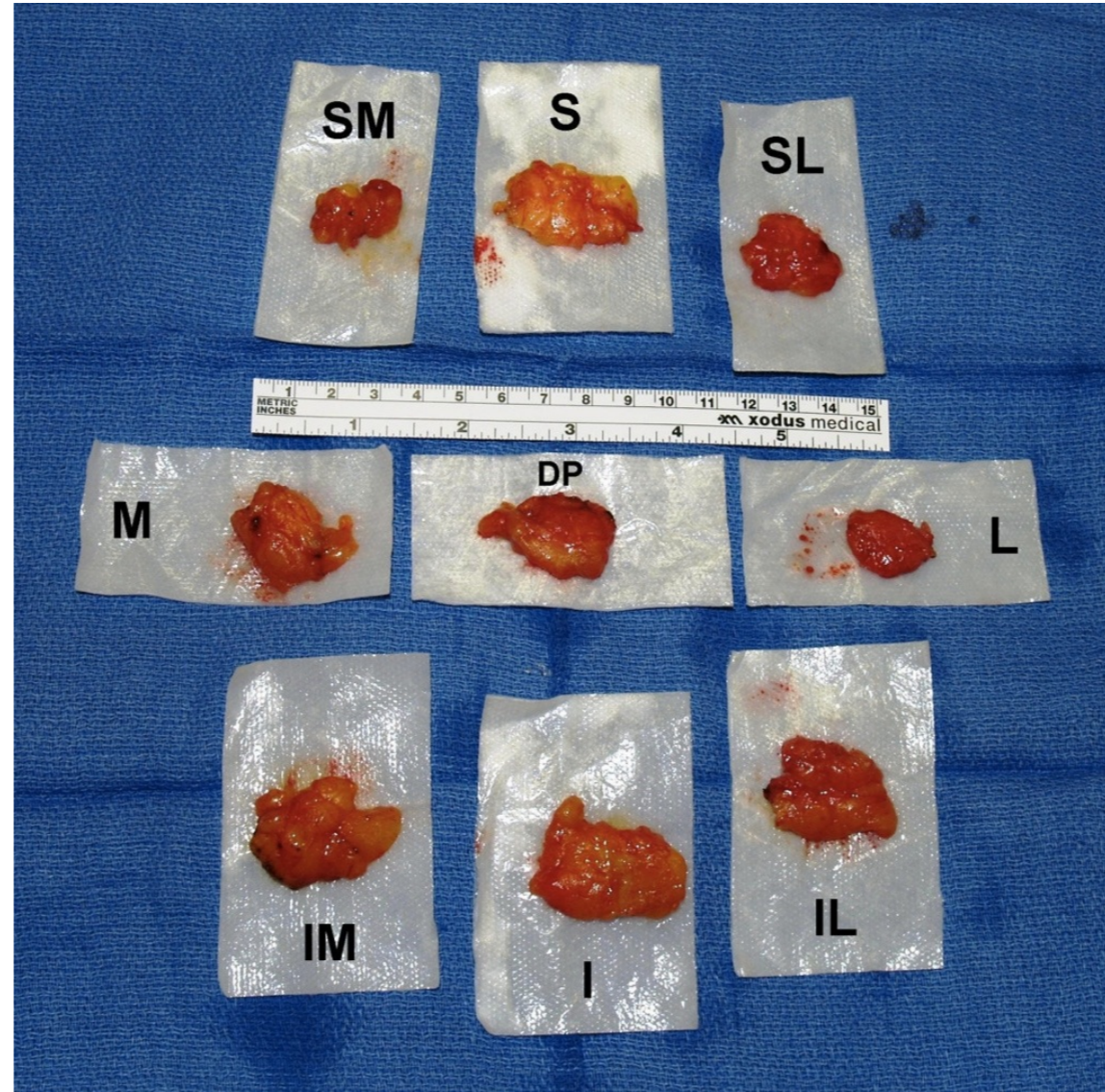
INTRAOPERATIVE BRACHYTHERAPY FOR SOFT TISSUE SARCOMA



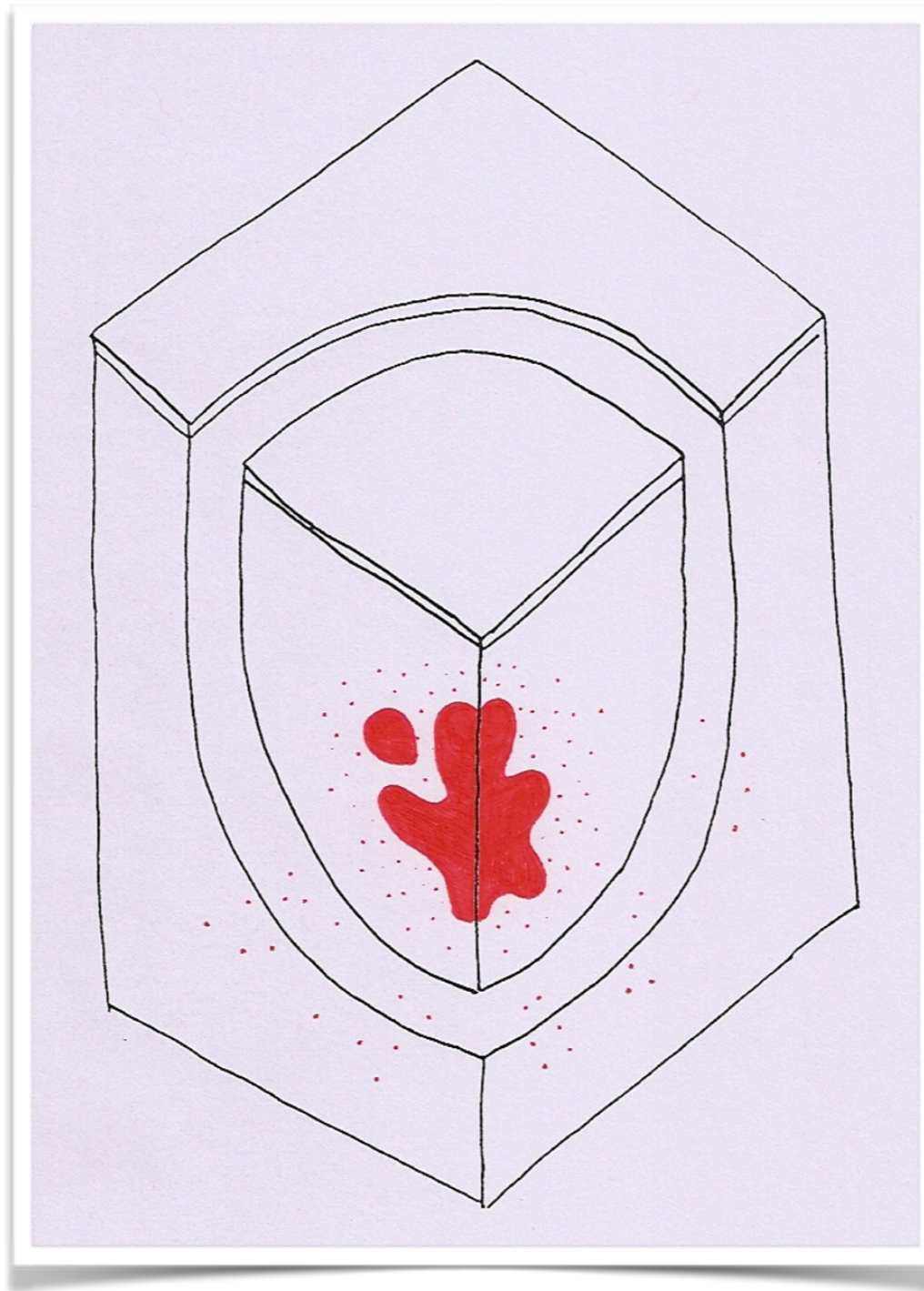
Uncomplicated tumor control is the goal of conserving therapy for STS



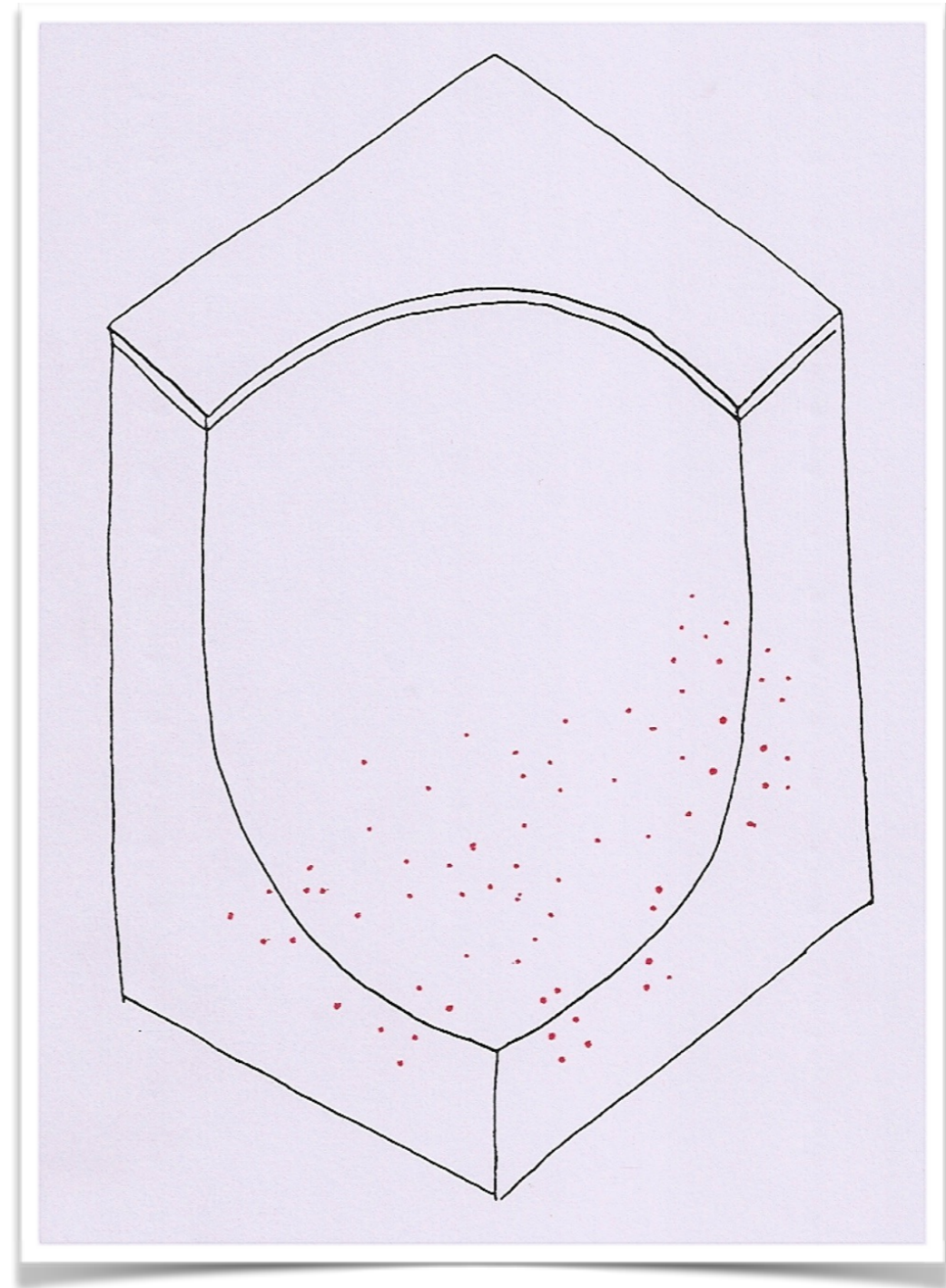
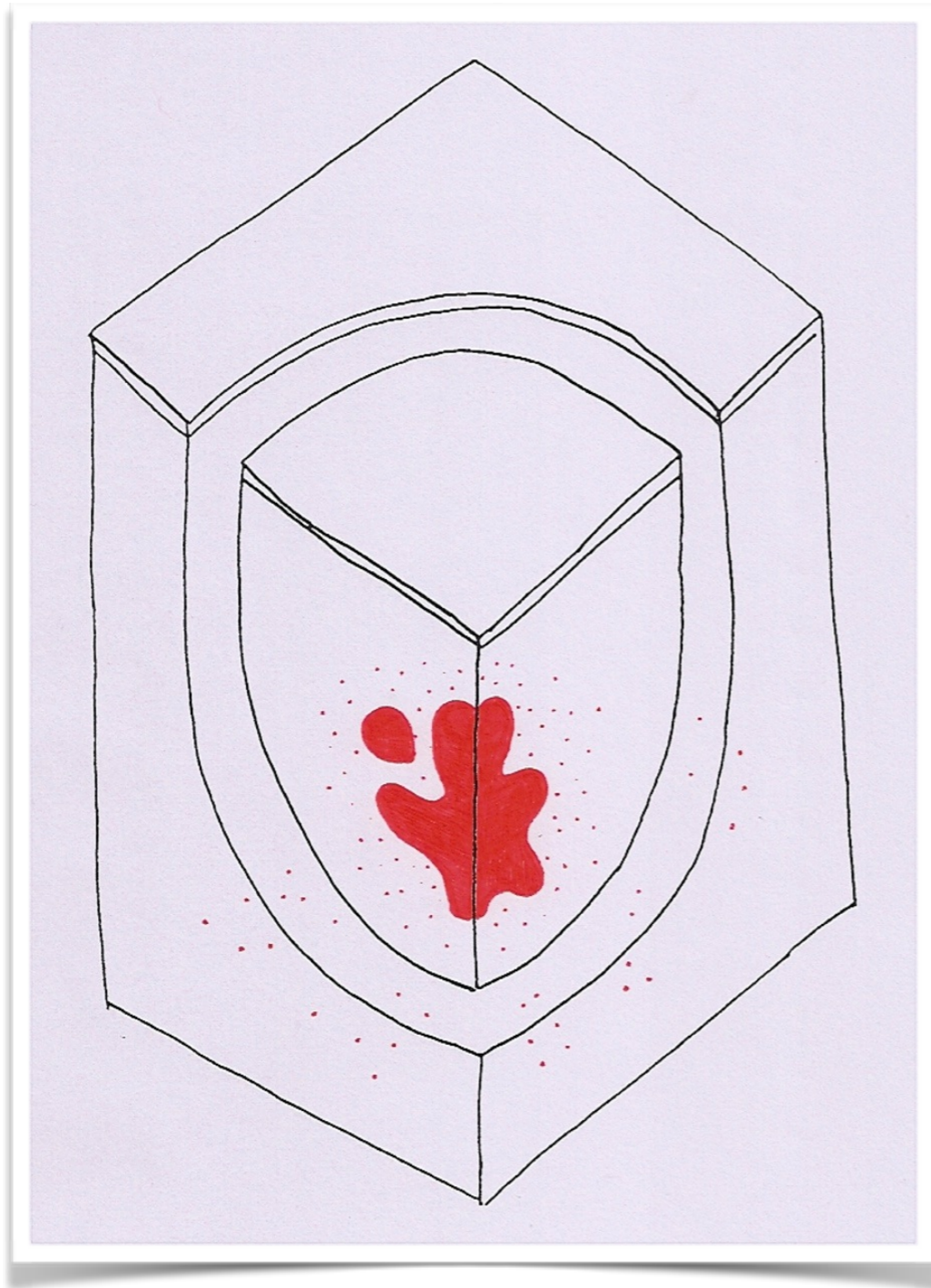


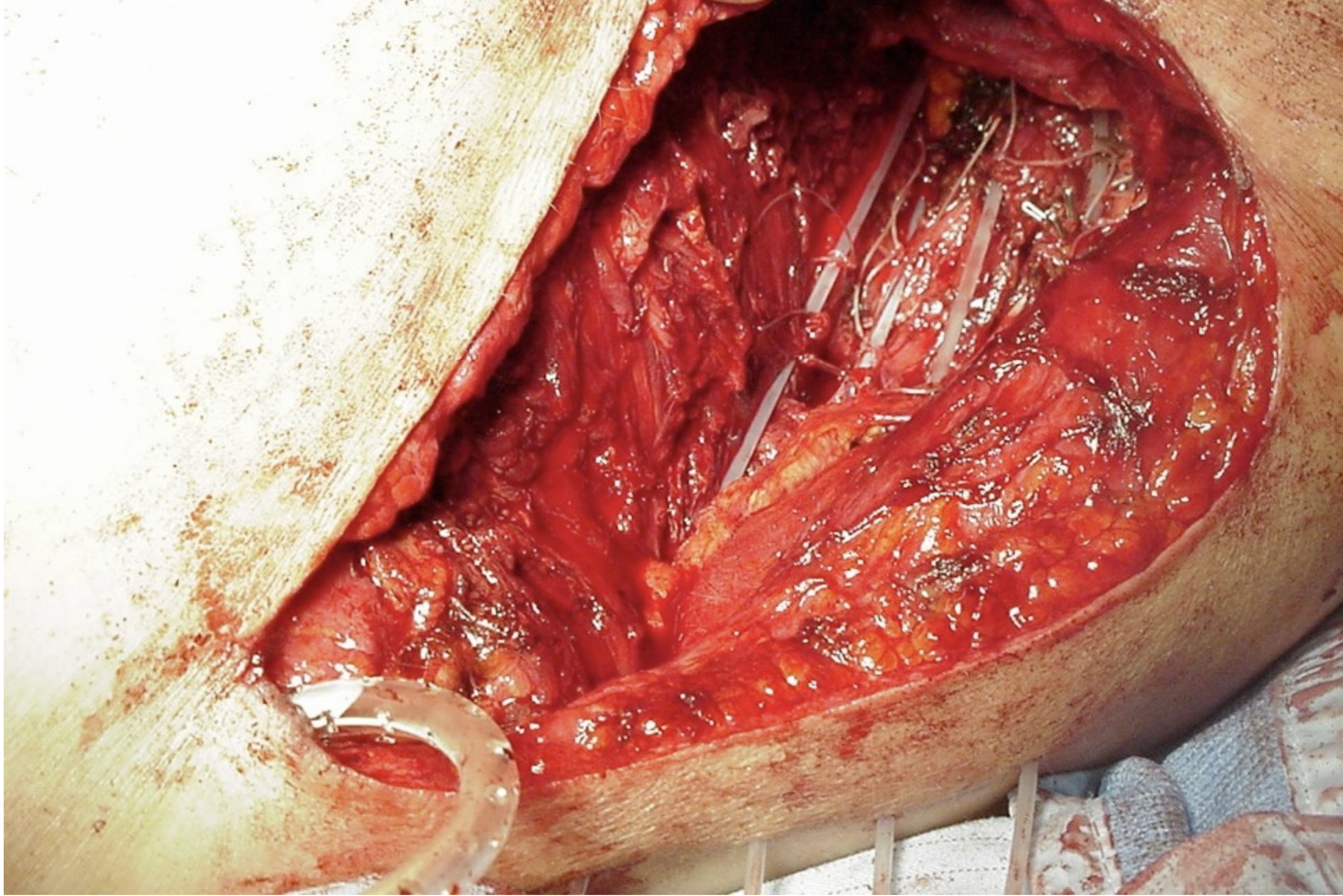


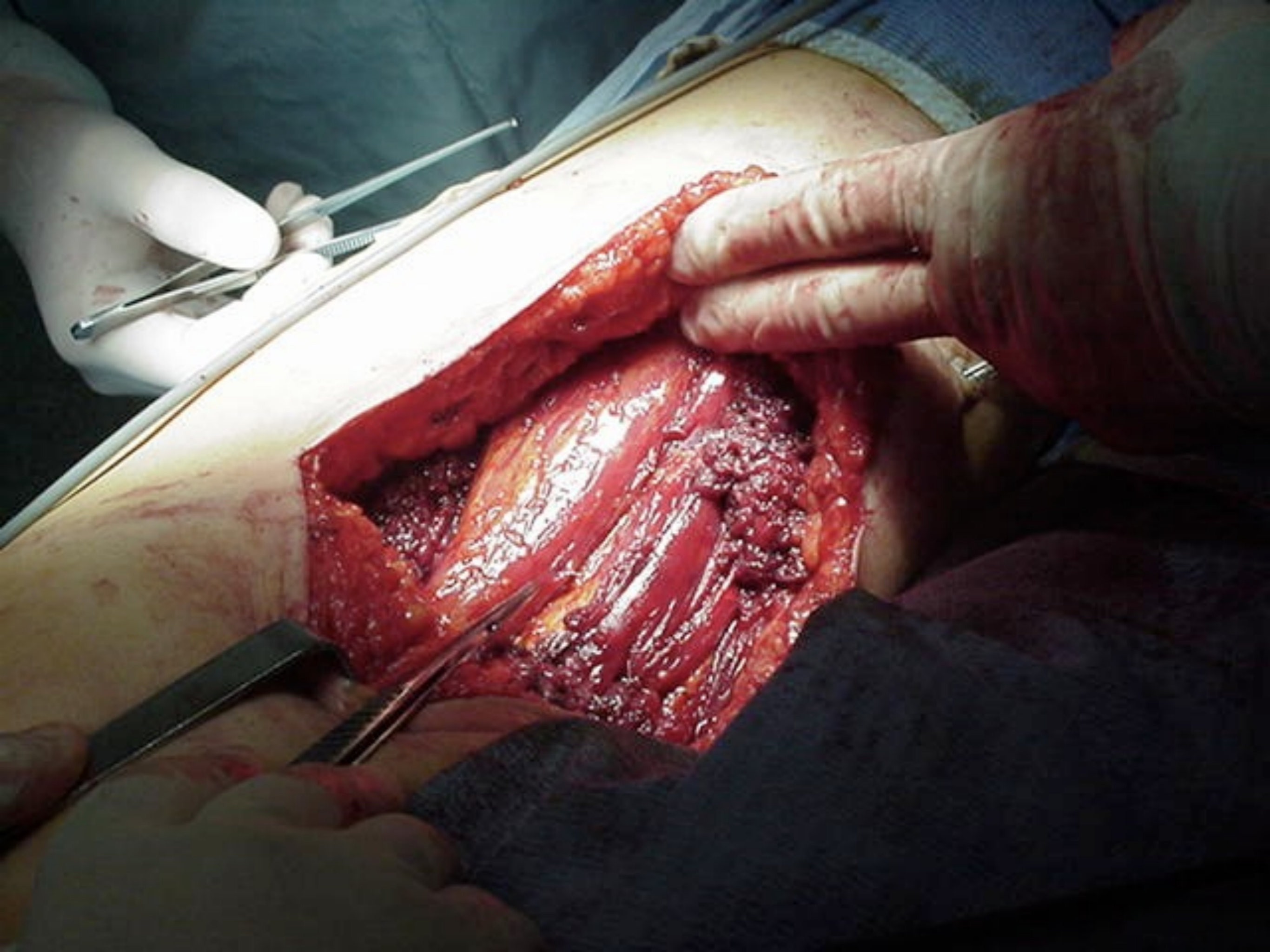
SURGICAL BED AND RESIDUAL DISEASE

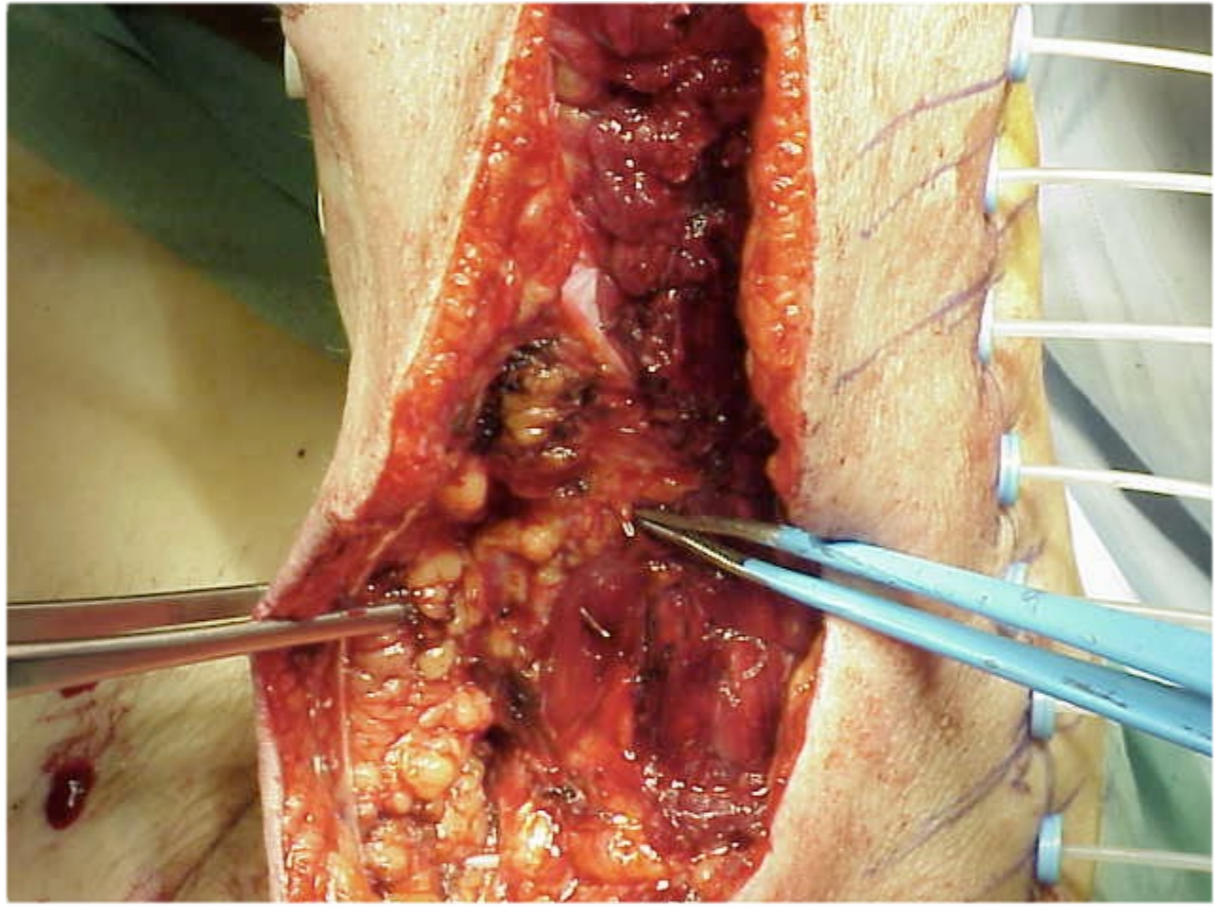


SURGICAL BED AND RESIDUAL DISEASE

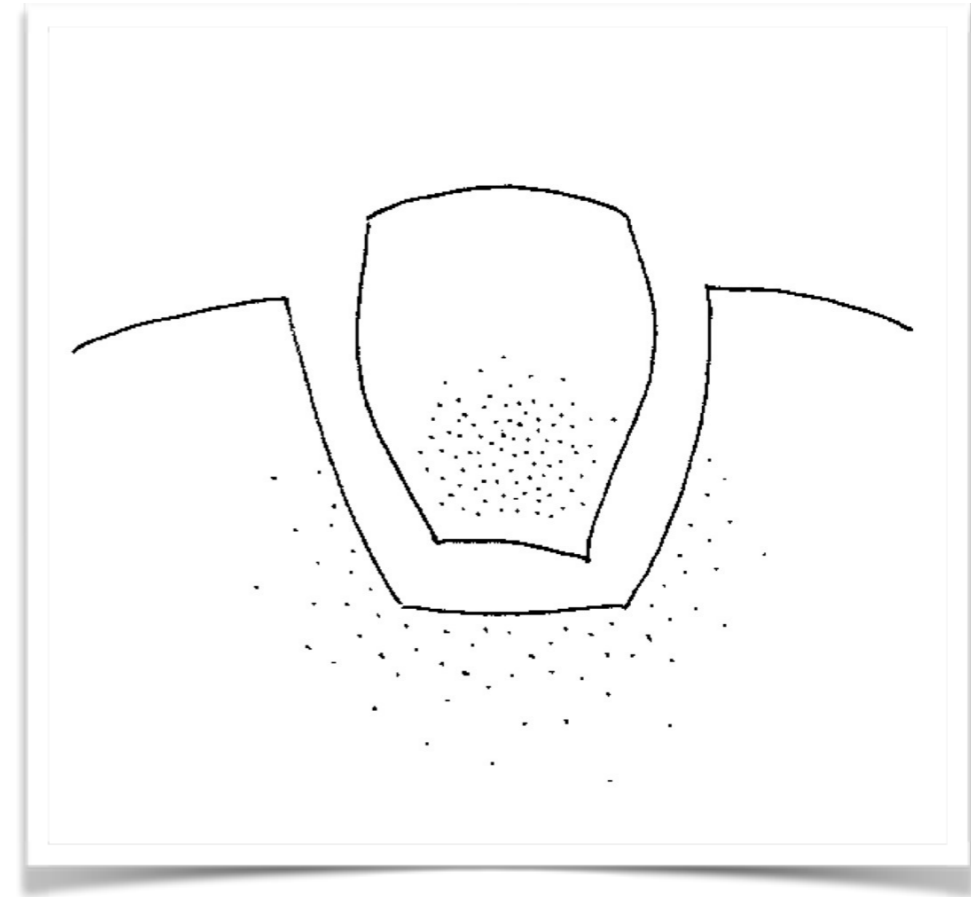
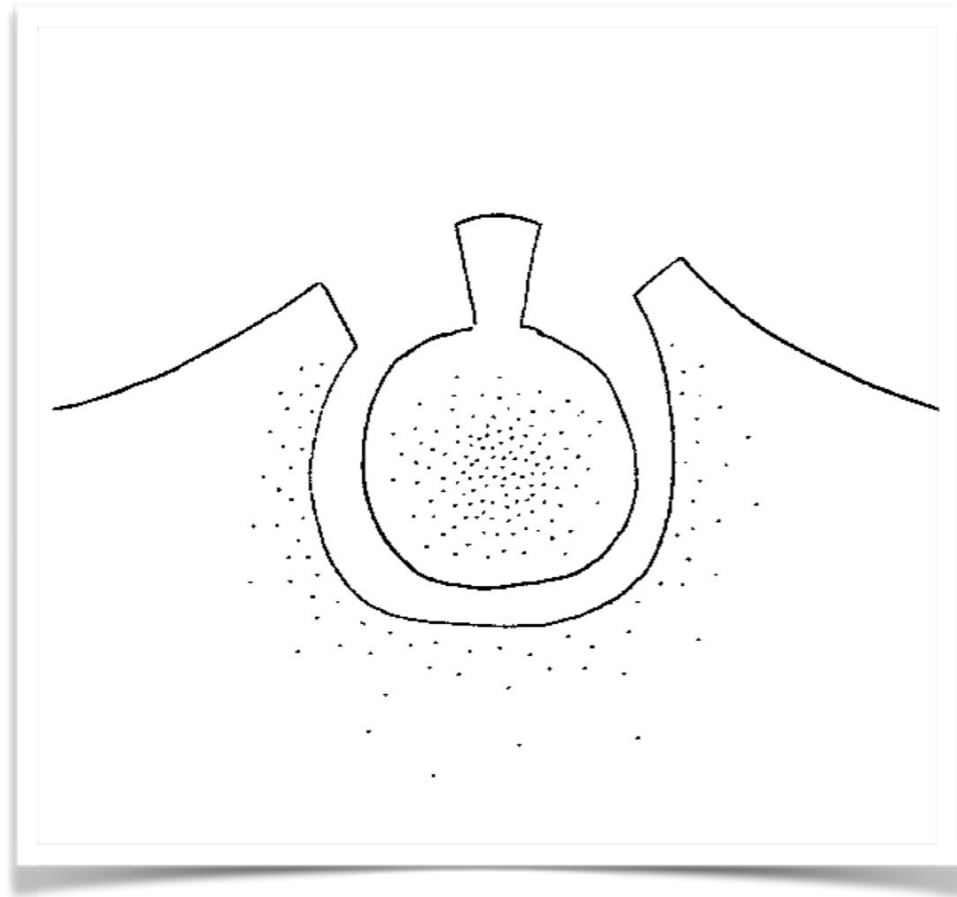




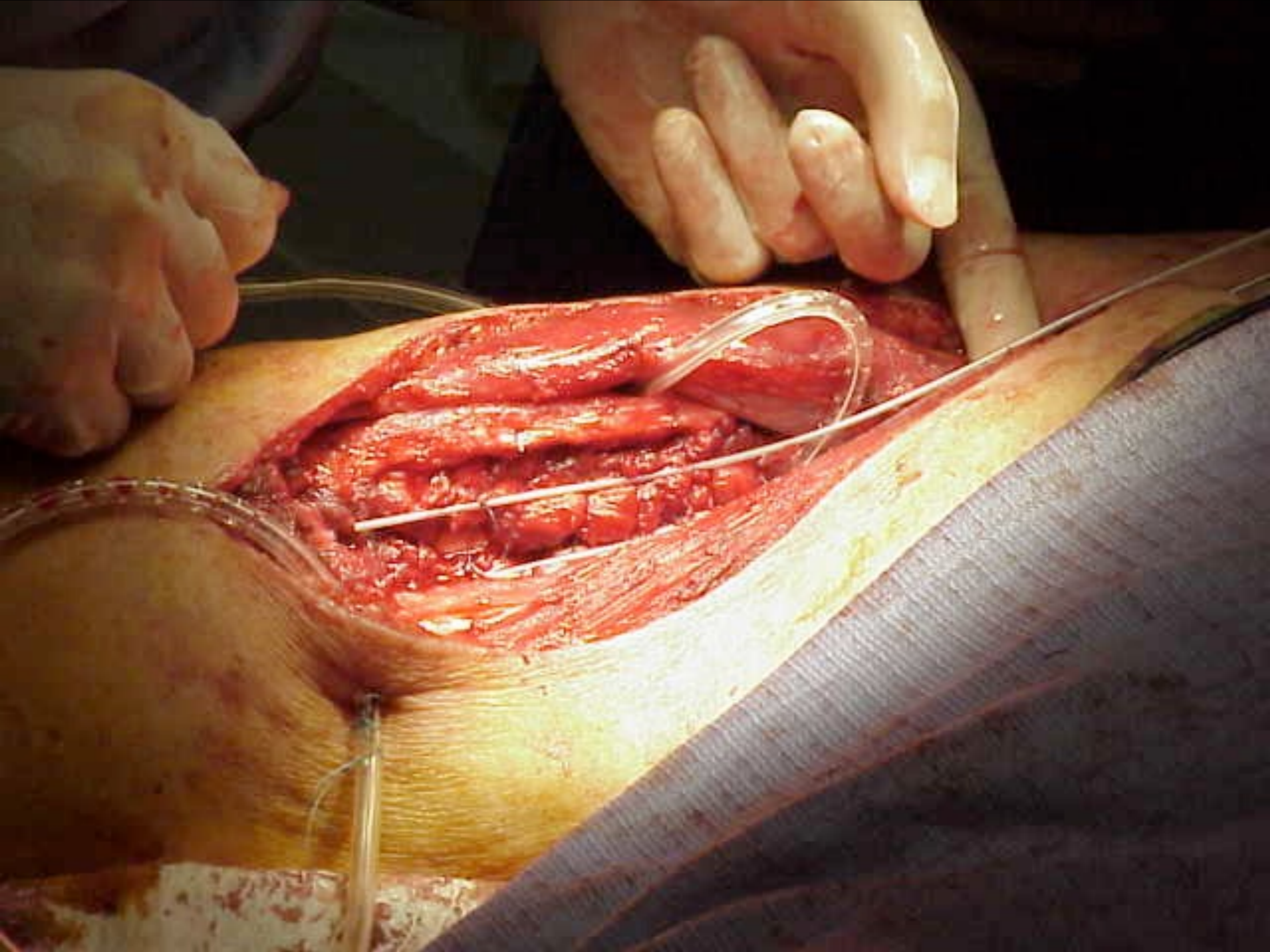


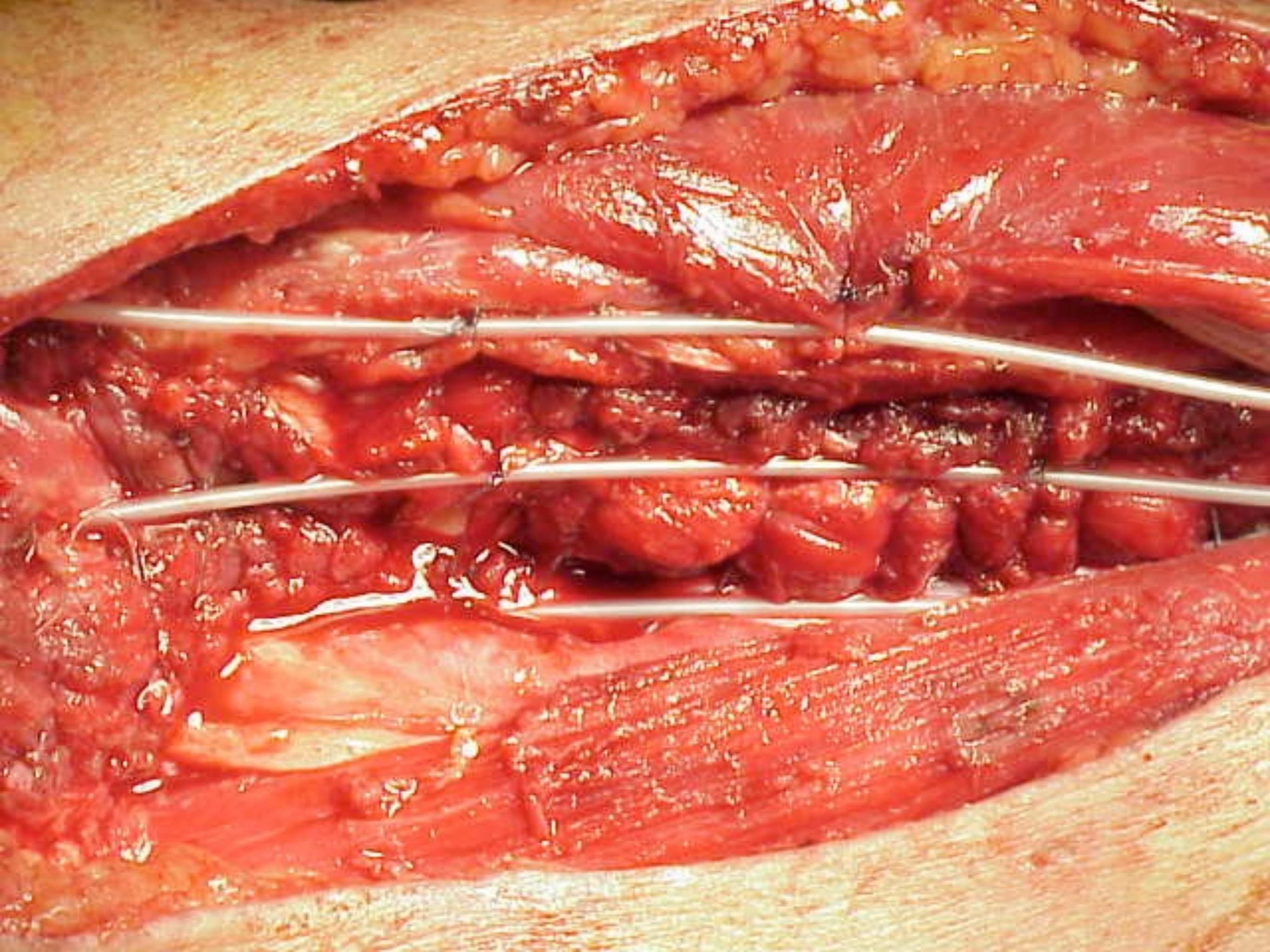


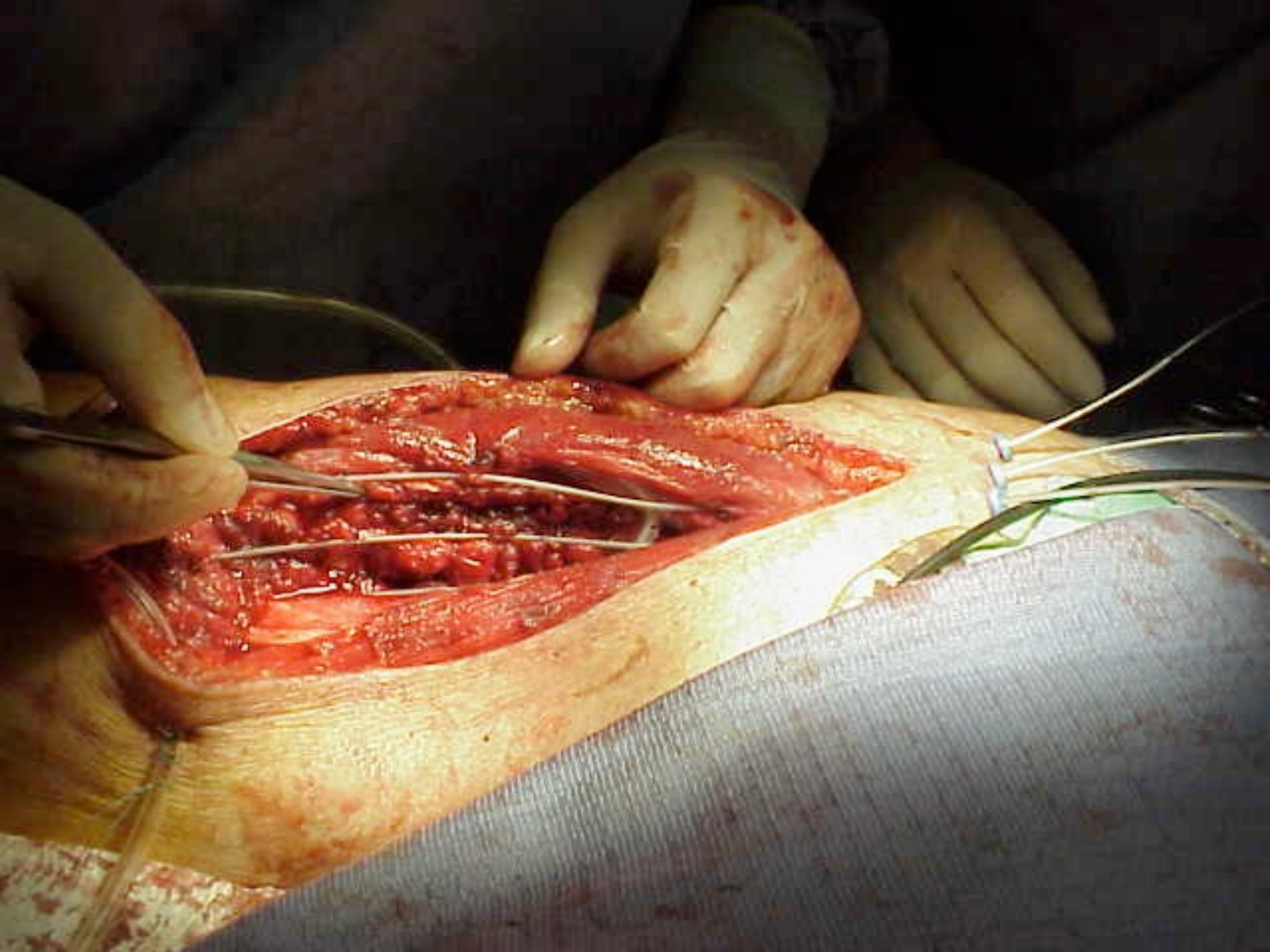
DIFFERENT CONFIGURATIONS FOR THE SURGICAL BED















ELSEVIER

Int. J. Radiation Oncology Biol. Phys., Vol. 49, No. 4, pp. 1033–1043, 2001
Copyright © 2001 Elsevier Science Inc.
Printed in the USA. All rights reserved
0360-3016/01/\$—see front matter

PII S0360-3016(00)01534-0

CLINICAL INVESTIGATION

Sarcoma

**THE AMERICAN BRACHYTHERAPY SOCIETY RECOMMENDATIONS FOR
BRACHYTHERAPY OF SOFT TISSUE SARCOMAS**

SUBIR NAG, M.D.,* DANIEL SHASHA, M.D.,† NORA JANJAN, M.D.,‡ IVY PETERSEN, M.D.,§ AND
MARCO ZAIDER, PH.D.¶ for the American Brachytherapy Society

*Ohio State University, Columbus, OH; †Beth Israel Medical Center, New York, NY; ‡U.T.M.D. Anderson Cancer Center,
Houston, TX; §Mayo Clinic, Rochester, MN; ¶Memorial Sloan Kettering Cancer Center, New York, NY



ELSEVIER

Brachytherapy 12 (2013) 179–190

BRACHYTHERAPY

American Brachytherapy Society (ABS) consensus statement for sarcoma brachytherapy

Caroline L. Holloway^{1,*}, Thomas F. DeLaney², Kaled M. Alektiar³, Phillip M. Devlin⁴,
Desmond A. O'Farrell⁴, D. Jeffrey Demanes⁵

¹*Department of Radiation Oncology, BC Cancer Agency, Vancouver Island Centre, Victoria, BC, Canada*

²*Department of Radiation Oncology, Massachusetts General Hospital, Harvard Medical School, Boston, MA*

³*Department of Radiation Oncology, Memorial Sloan-Kettering Cancer Center, New York, NY*

⁴*Department of Radiation Oncology, Dana-Farber Cancer Institute, Brigham and Women's Cancer Center, Harvard Medical School, Boston, MA*

⁵*Division of Brachytherapy, Department of Radiation Oncology, University of California, Los Angeles, CA*

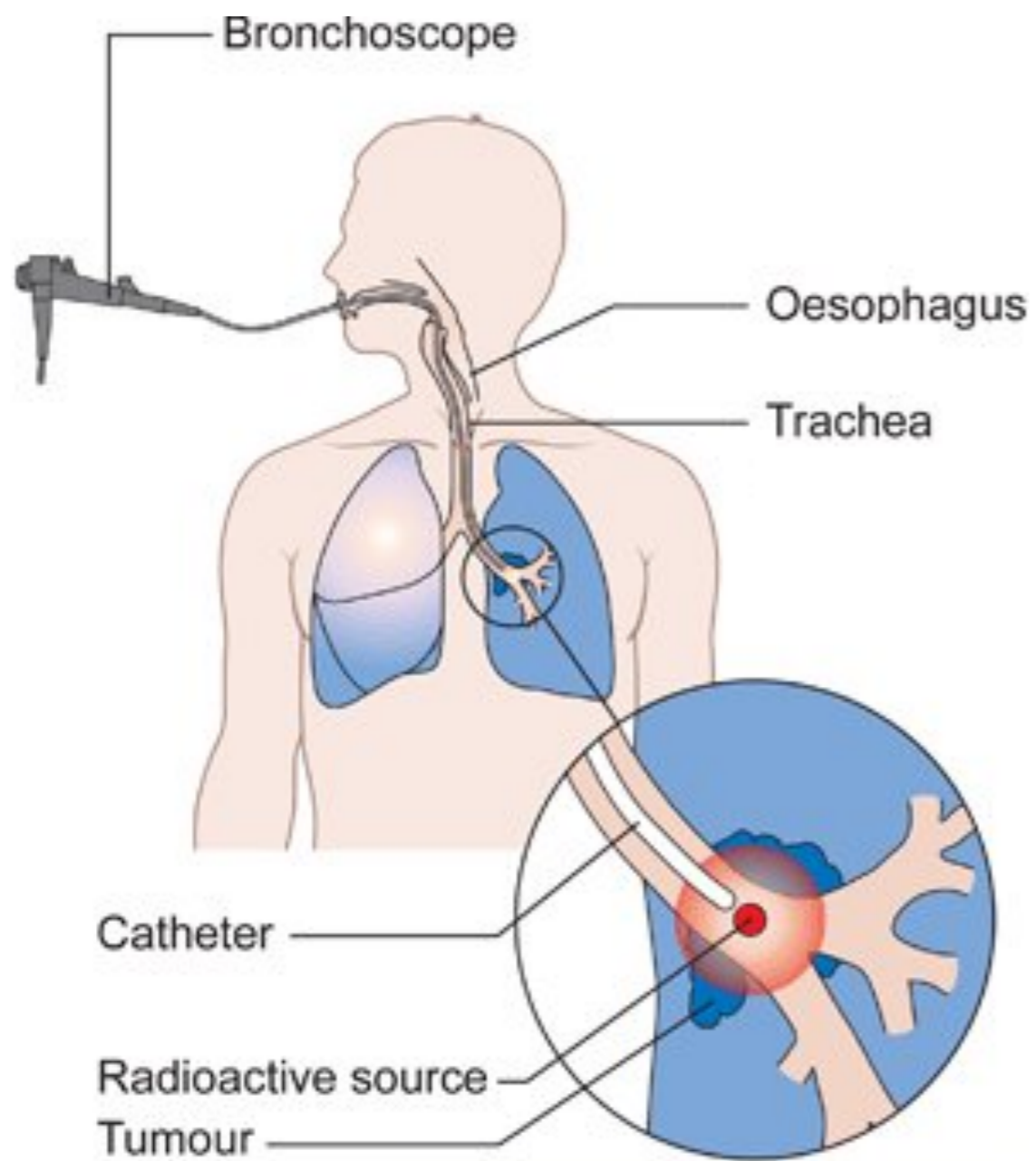
INTRALUMINAL BRACHYTHERAPY FOR ENDOBRONCHIAL MALIGNANCIES

1922: Yankauer described two cases of lung cancer treated endoscopically with radium (Ra)-226 [*Yankauer S: Two cases of lung tumour treated bronchoscopically. NY Med J 21:741-742, 1922*]

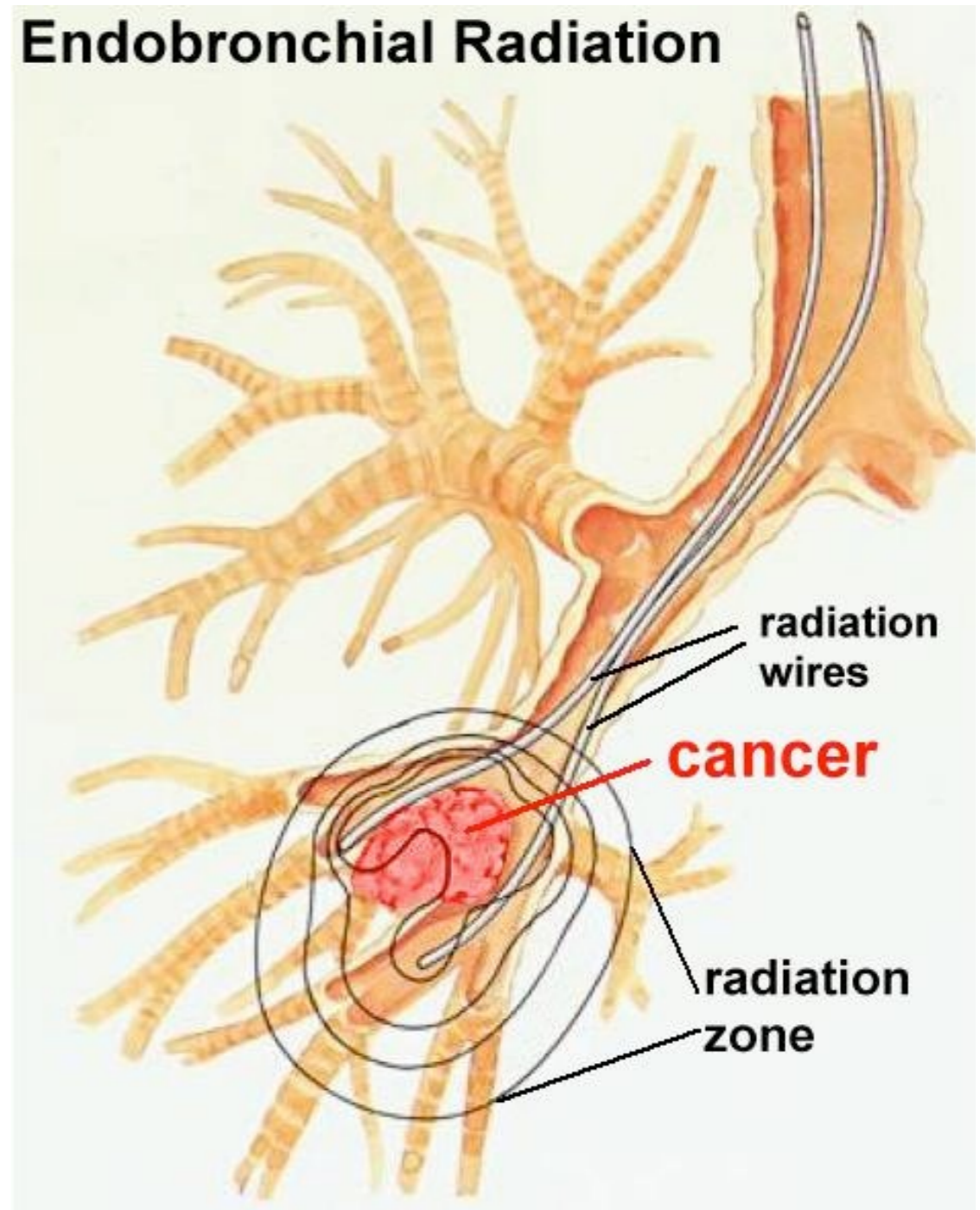
1933: Graham and Singer implanted radon-222 seeds into lung tumors [Graham EA, Singer JJ: Successful removal of an entire lung for carcinoma of the bronchus. *JAMA 101:1371-1374, 1933*]

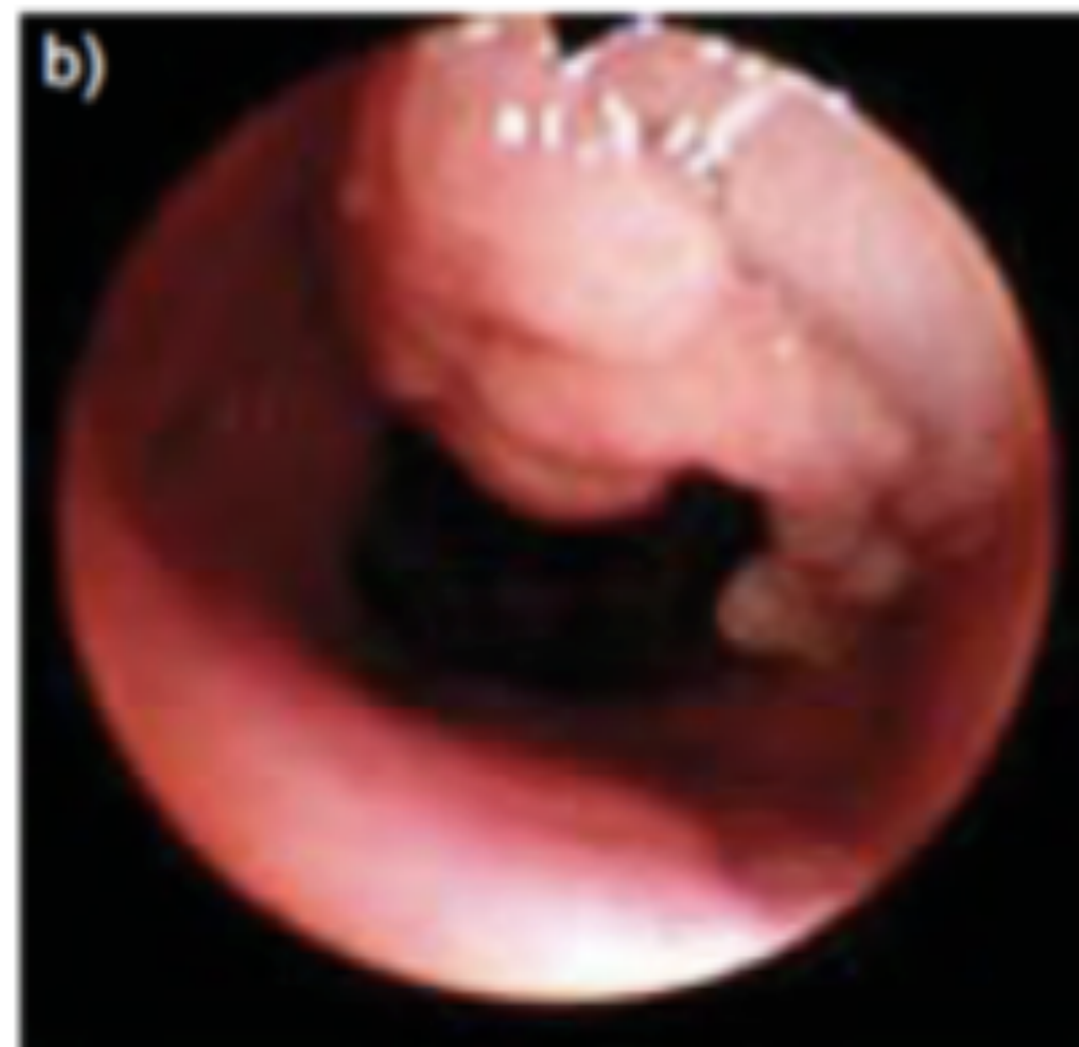
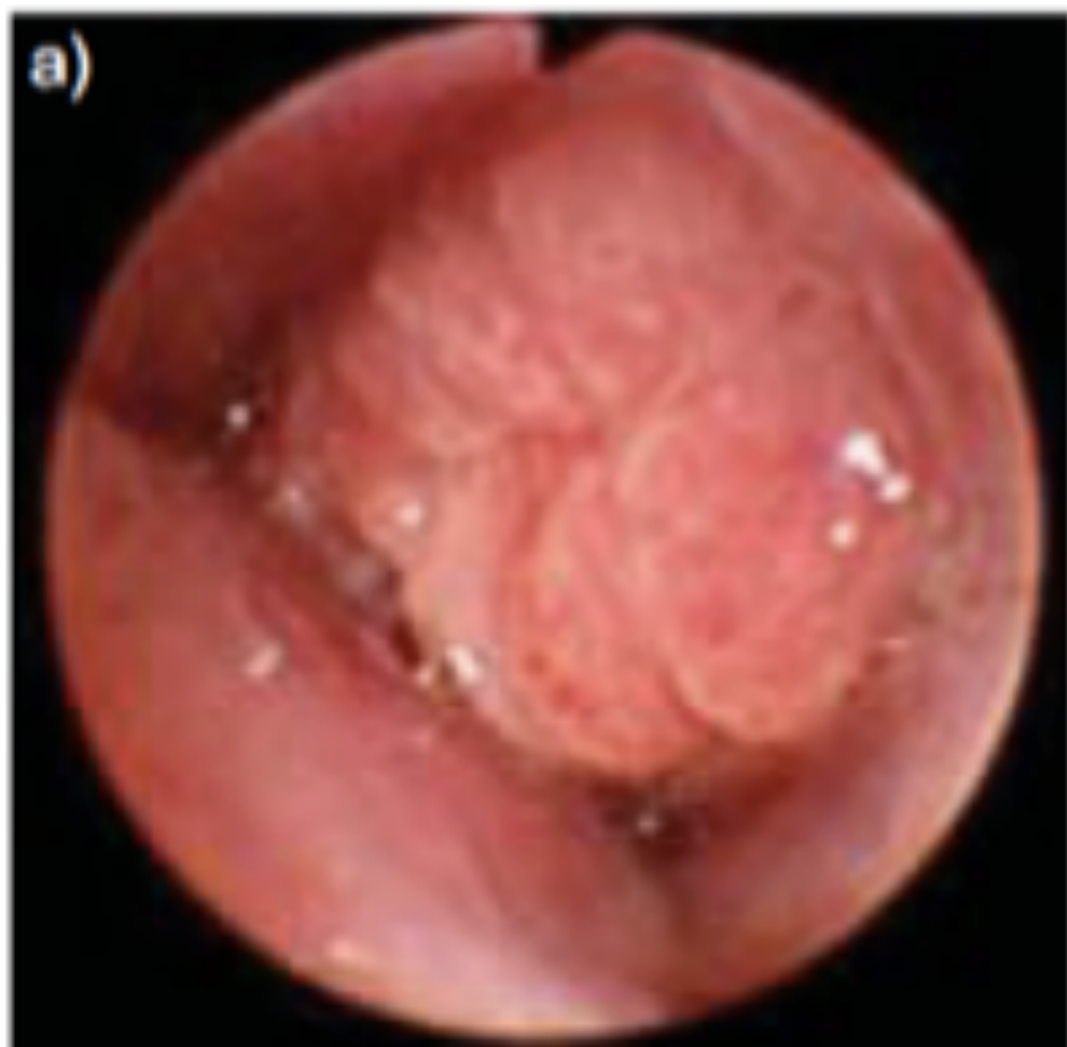
1941: Ormerod performed transbronchial brachytherapy [Ormerod FC: Some notes on the treatment of carcinoma of the bronchus. *J Larynx Otol 56:1-10, 1941*]

1949: Ariel, IM et al. The use of interstitial radon seeds and needles in inoperable lung cancer. *Cancer 1949; 2: 581-586*

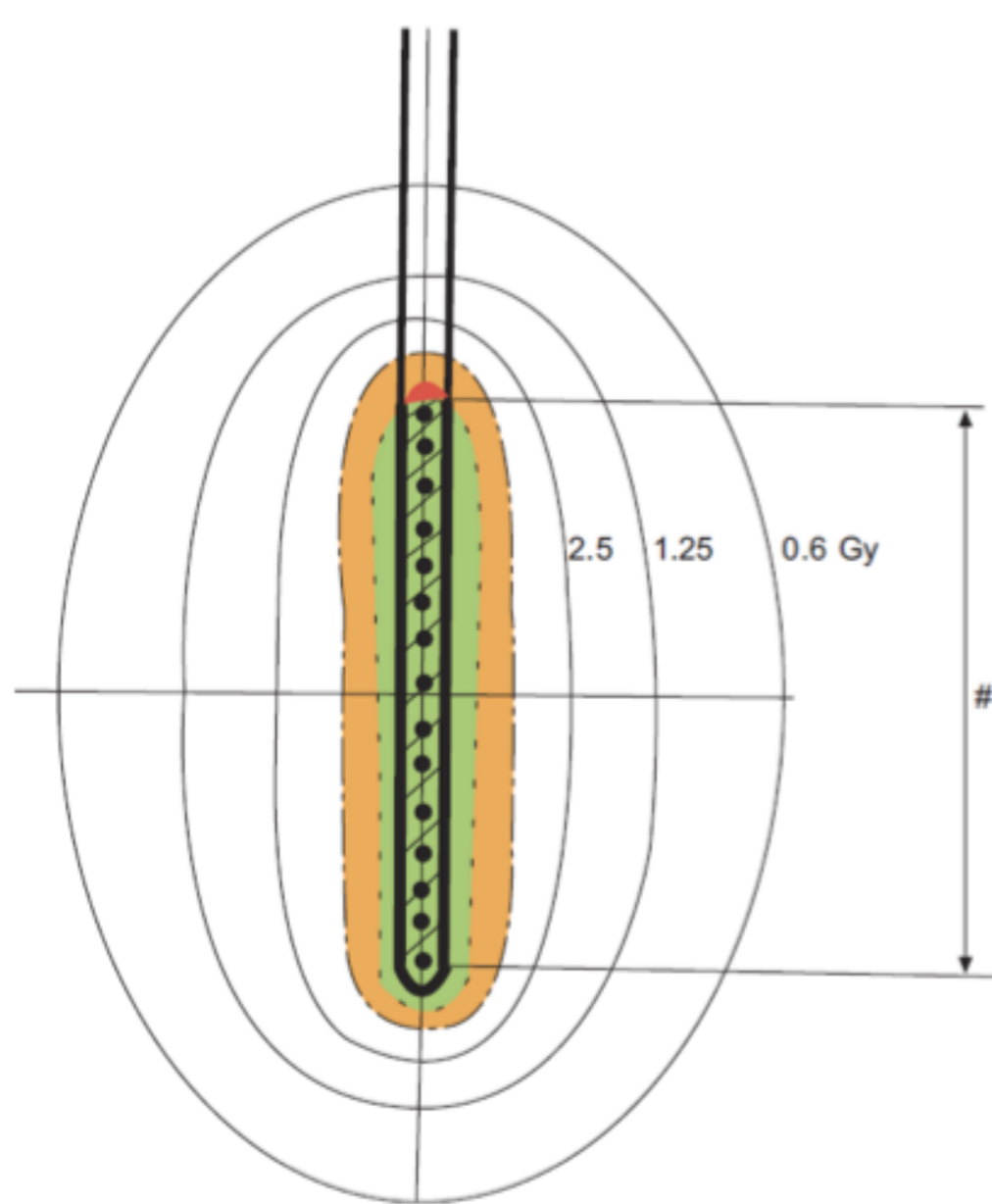


Endobronchial Radiation

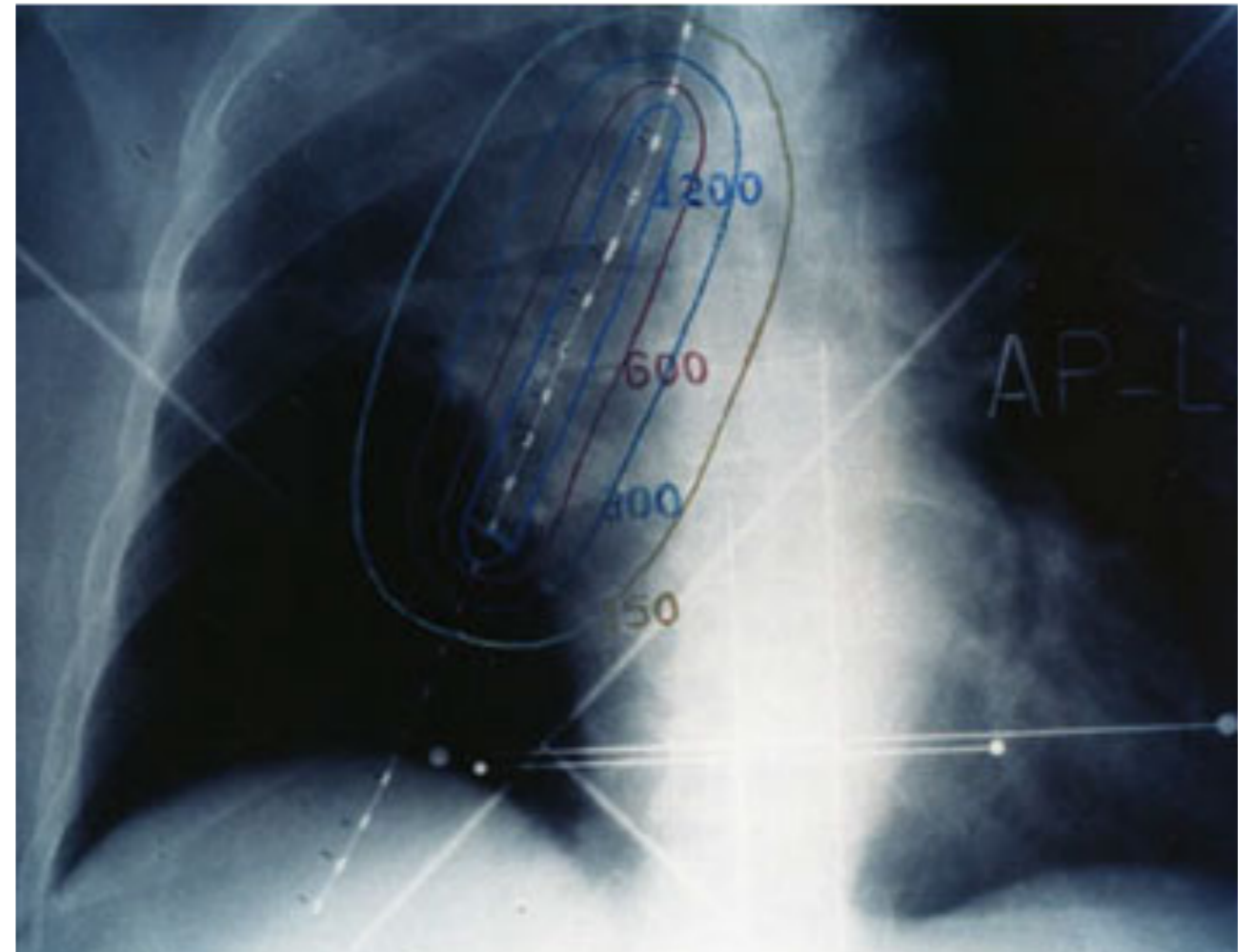


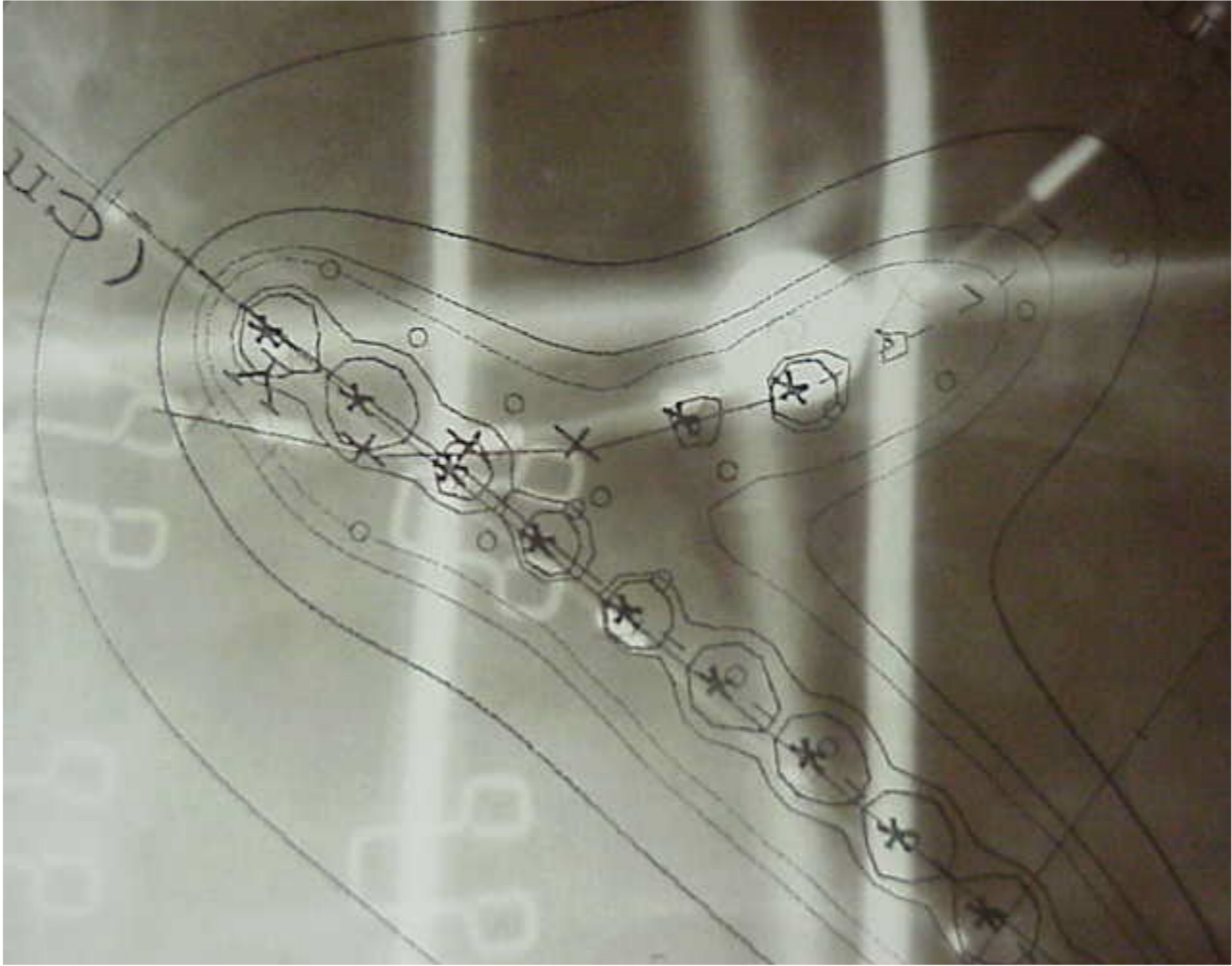


DOSE PRESCRIPTION

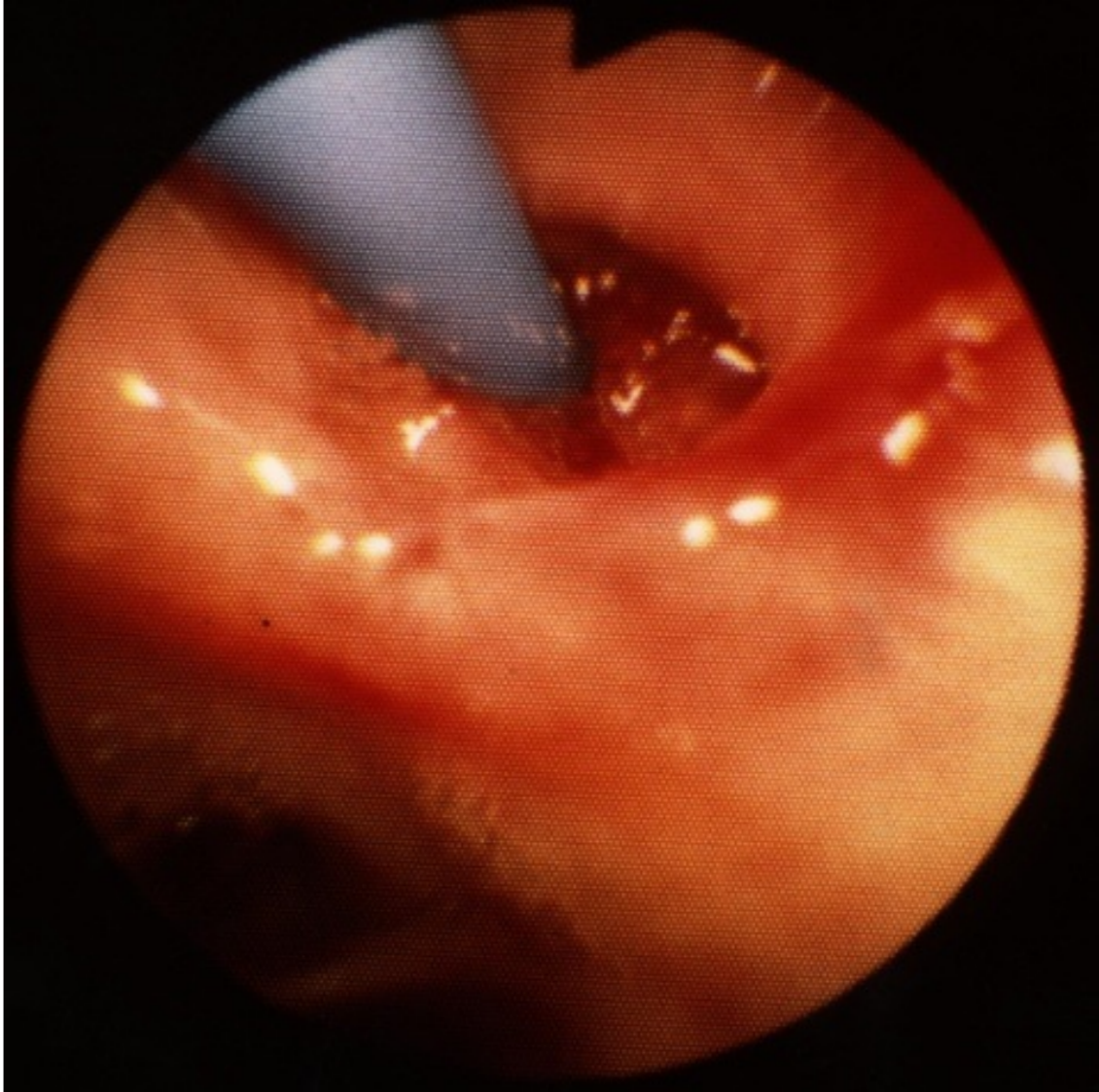
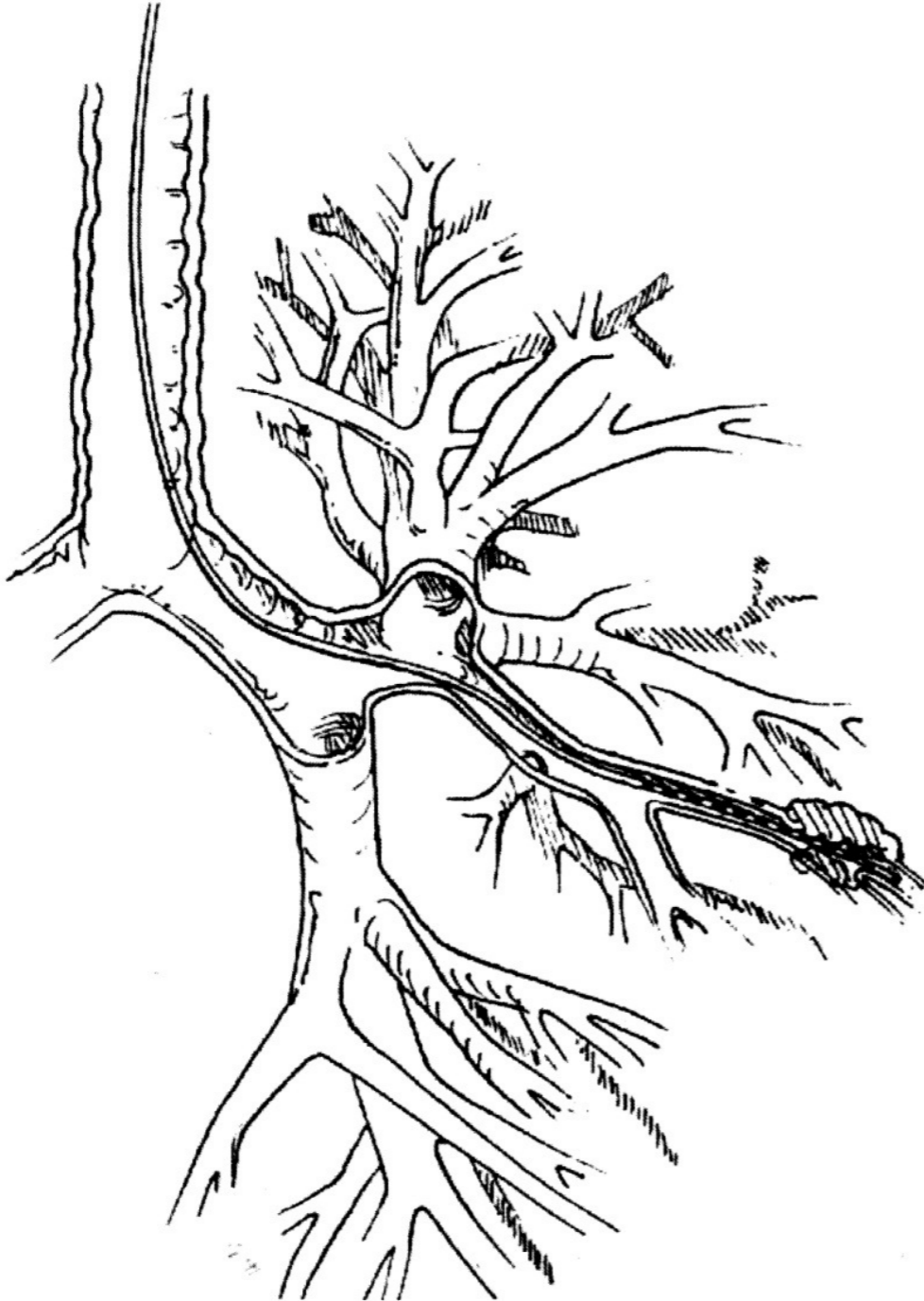


ENDOBONCHIAL CATHETER

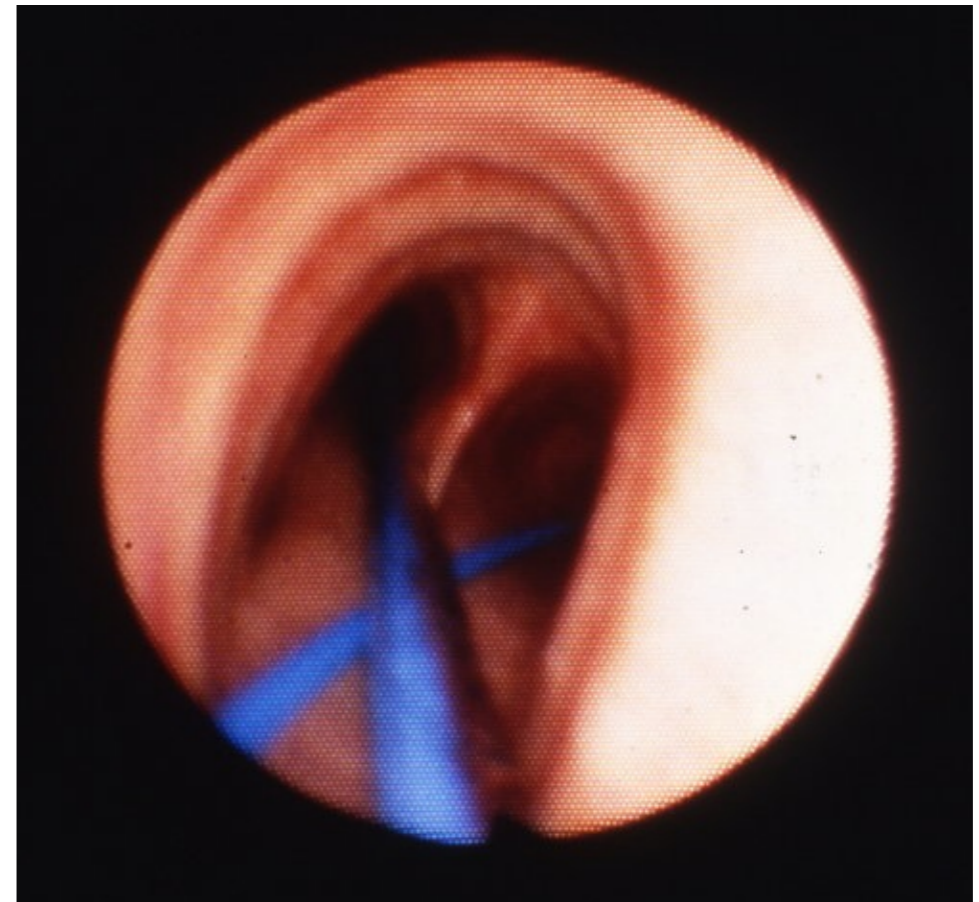
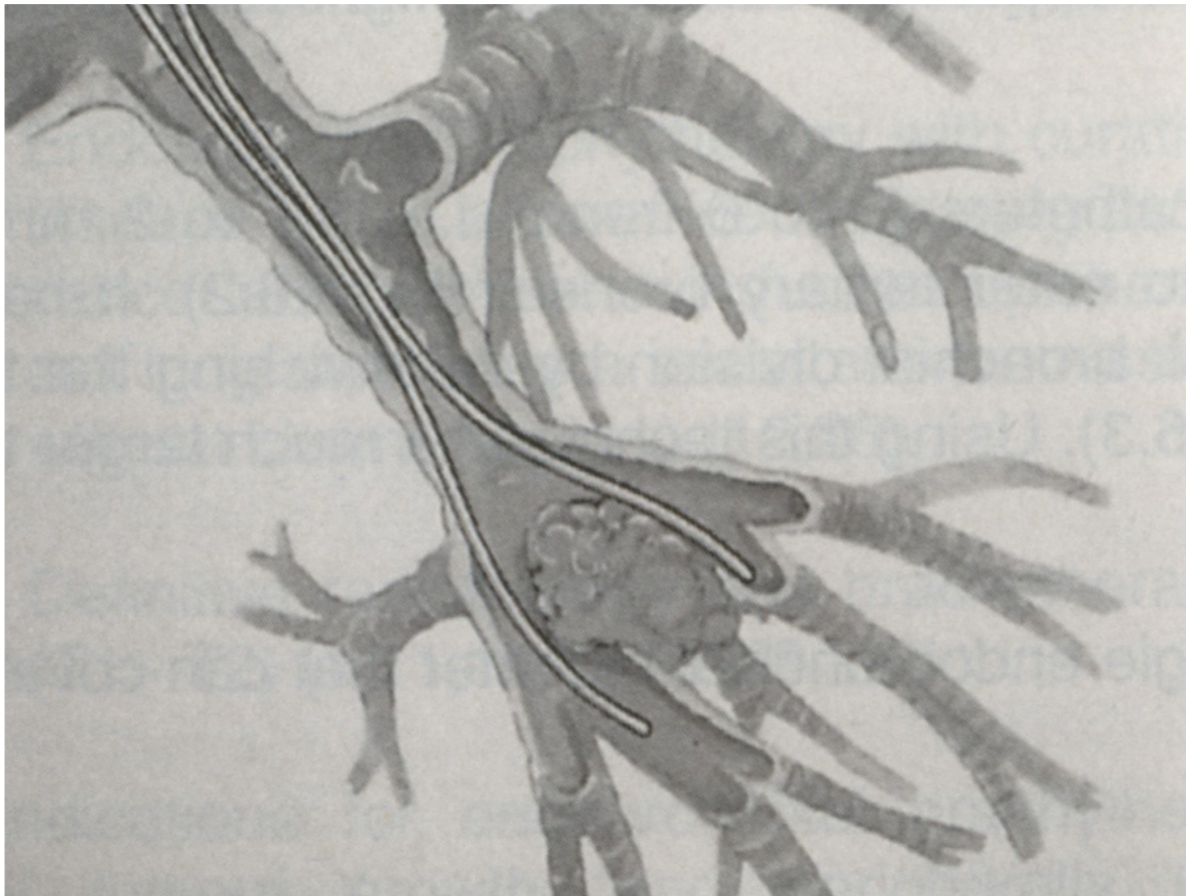




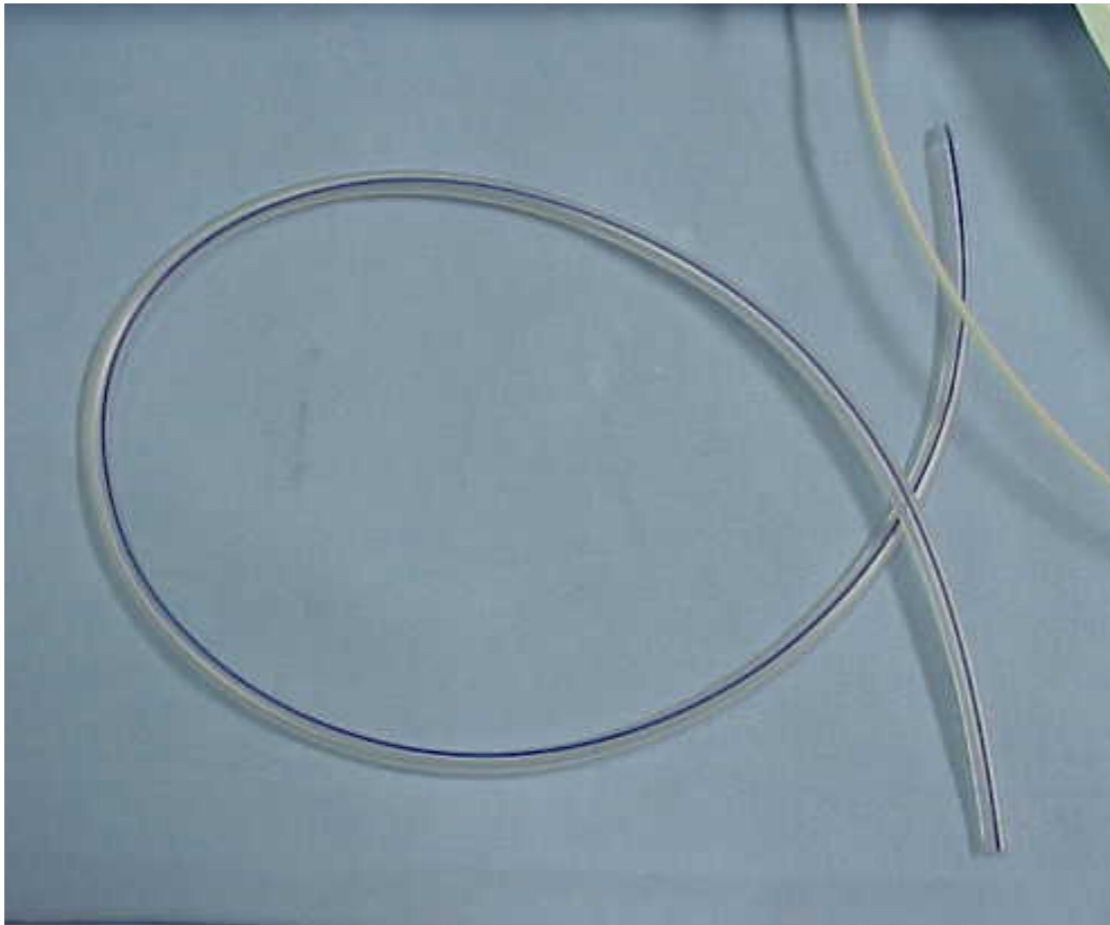
COMPLETELY OBSTRUCTING LESIONS



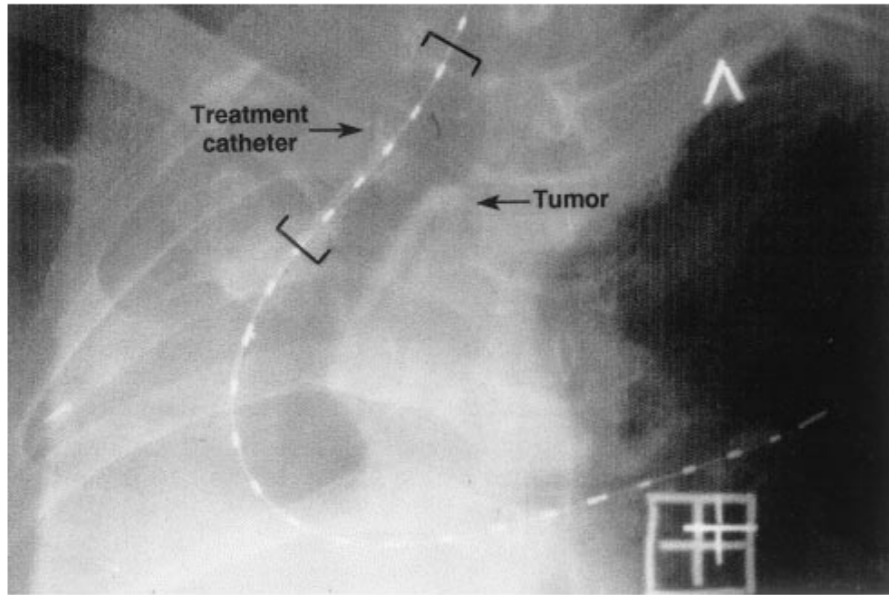
DOUBLE CATHETER TECHNIQUE



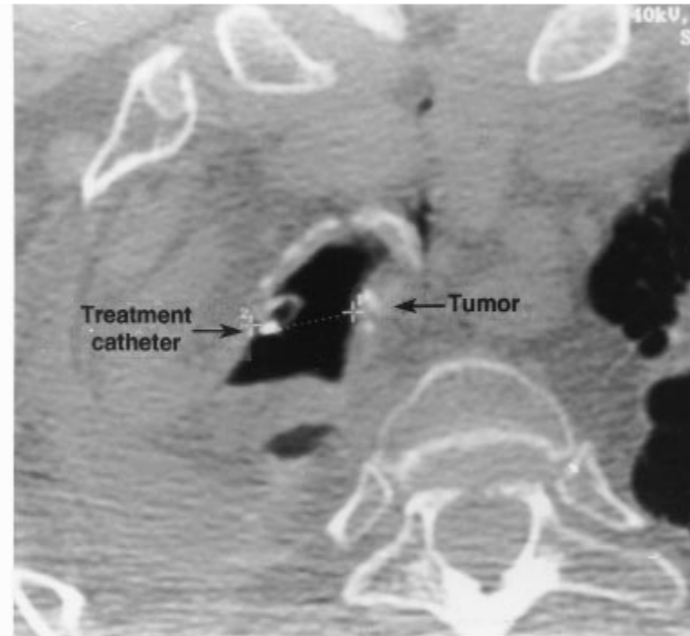
APPLICATOR POSITIONING TECHNIQUE



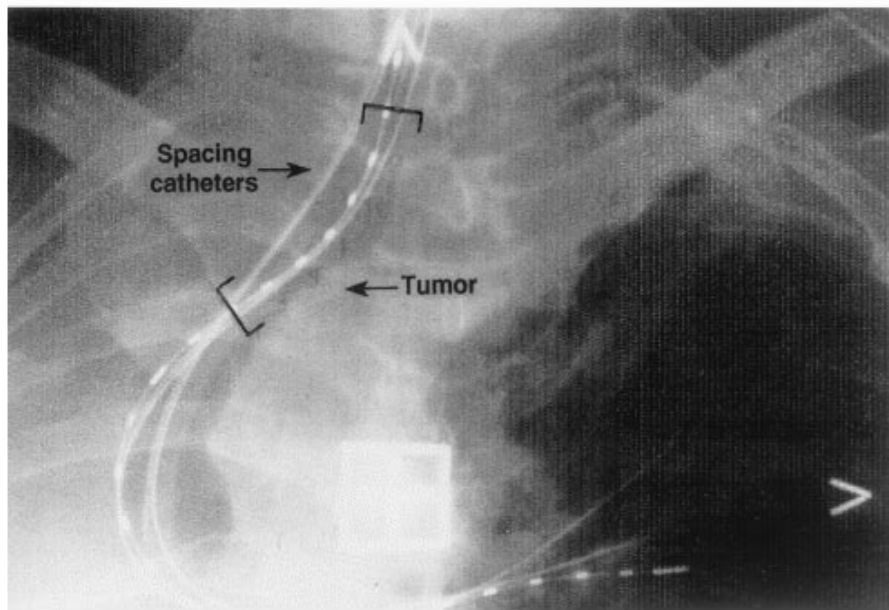
SPACING CATHETER TECHNIQUE



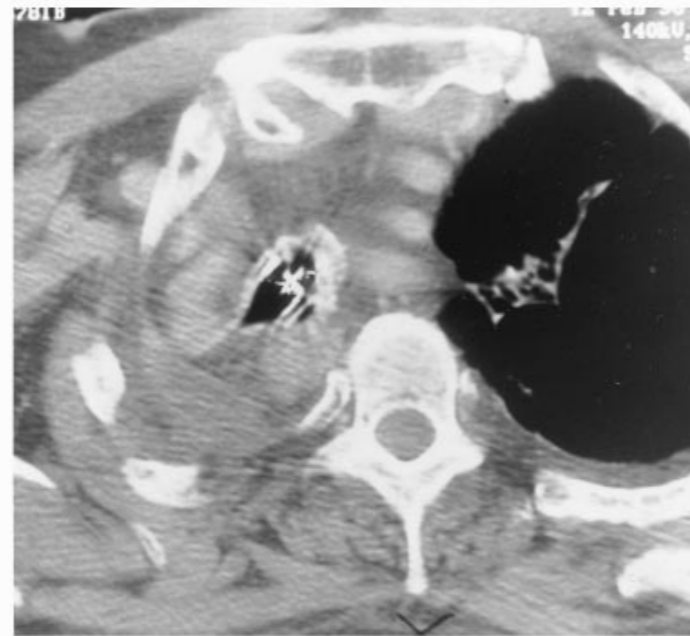
(a)



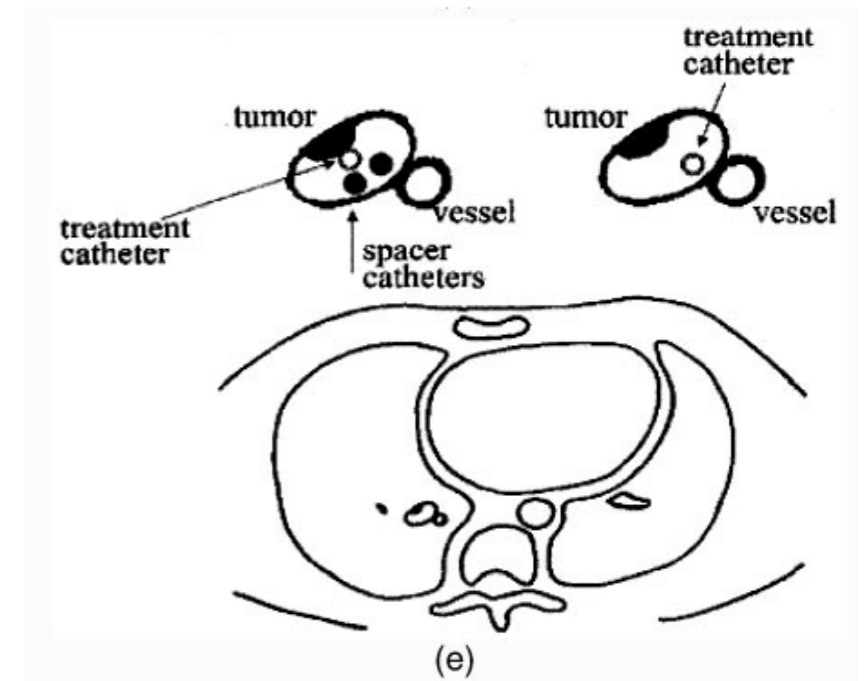
(b)



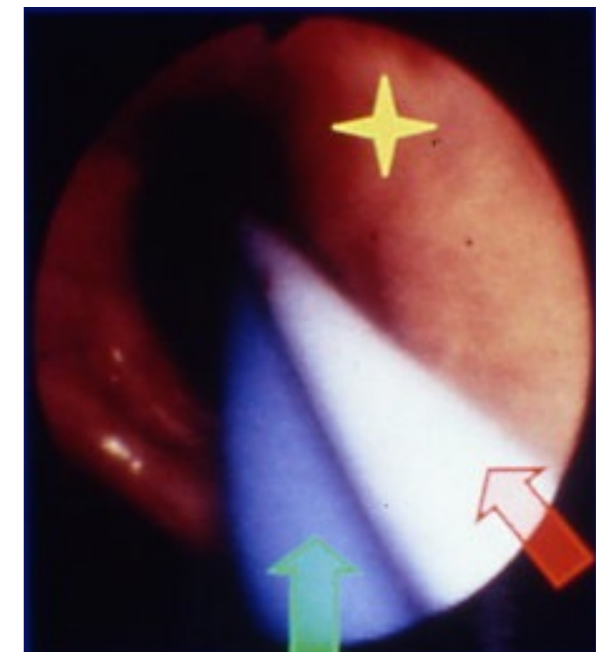
(c)



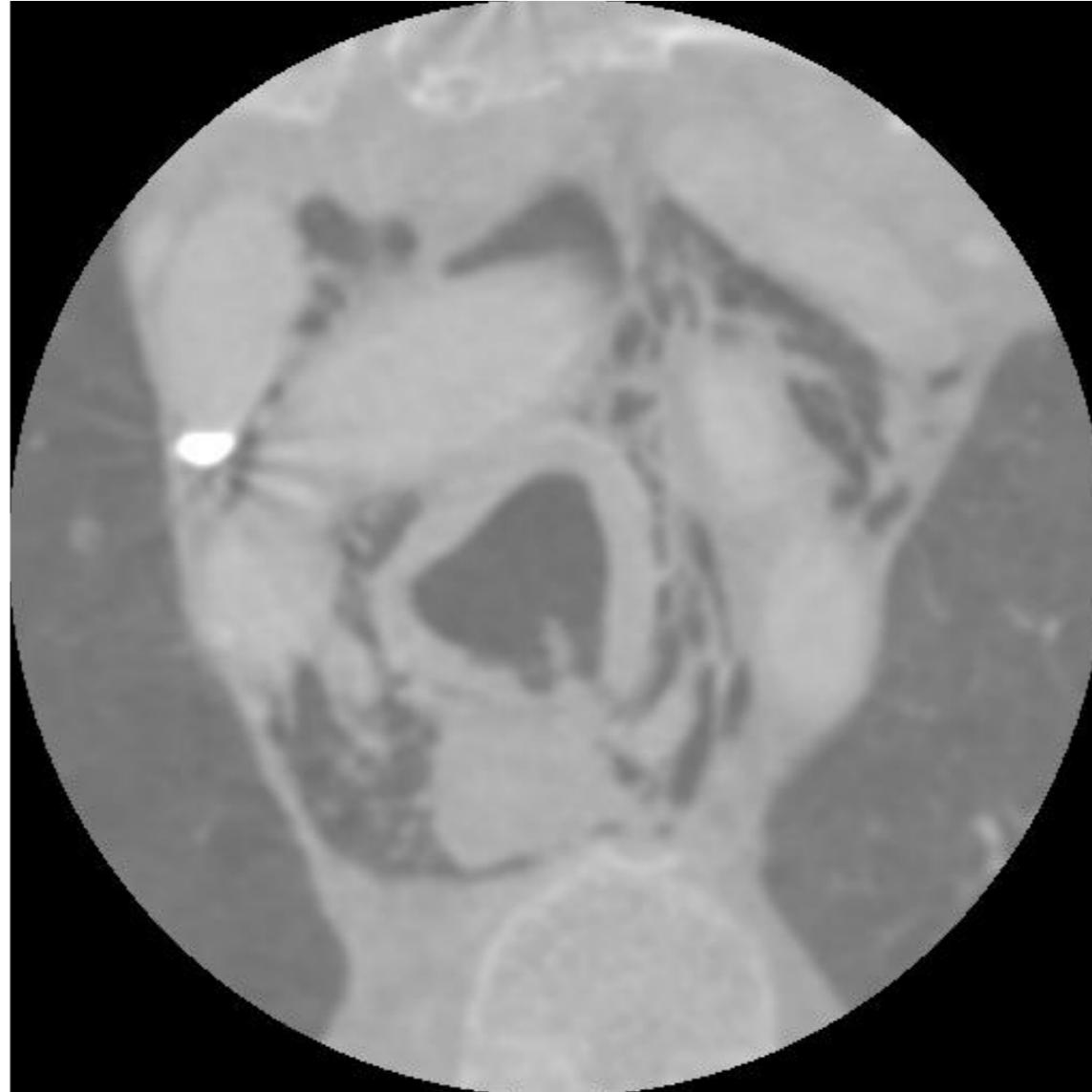
(d)



(e)



TOXICITY



BRACHYTHERAPY FOR EYE MALIGNANCIES

TWO ISOTOPES FOR LDR BRACHYTHETAPY

Ru-106 Eye Applicators
Beta Radiation for Eye Tumor Treatment



I-125 Ophthalmic Seeds
Individual Eye Tumor Treatment with COMS Eye Applicators



