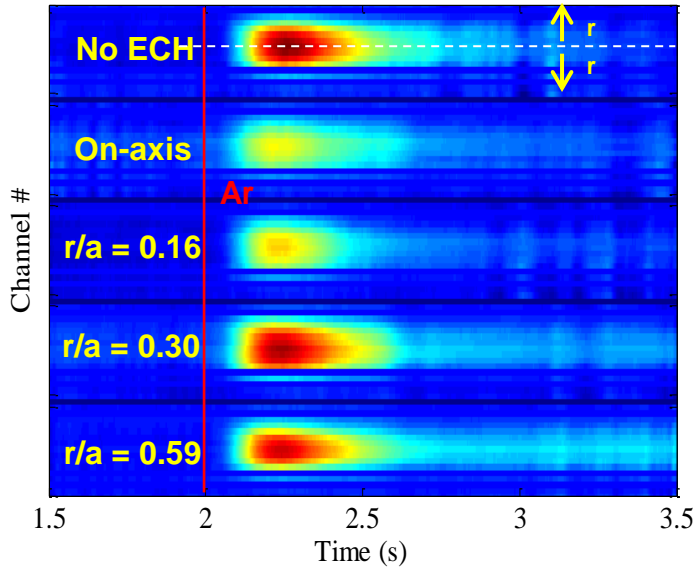
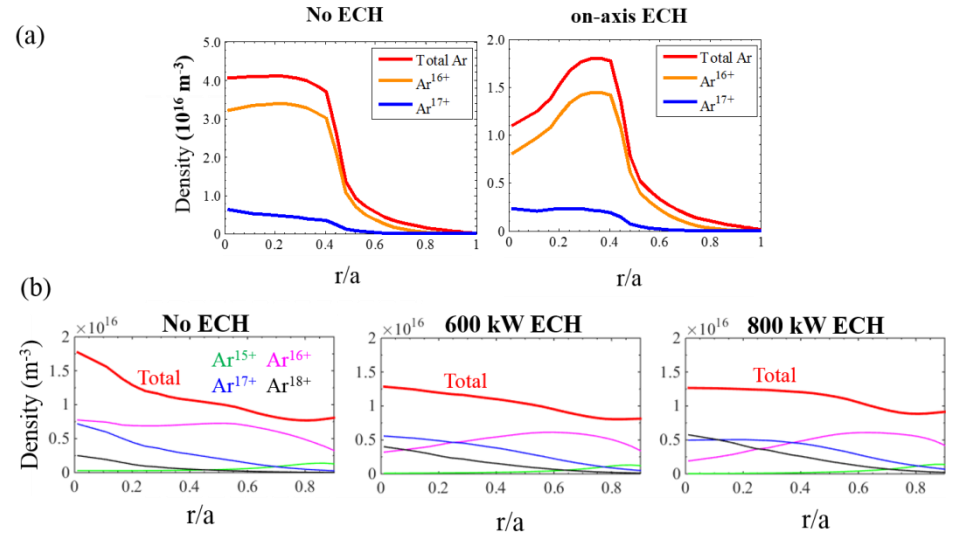


Effects of ECH and RMP on Argon Impurity Transport in KSTAR Plasmas

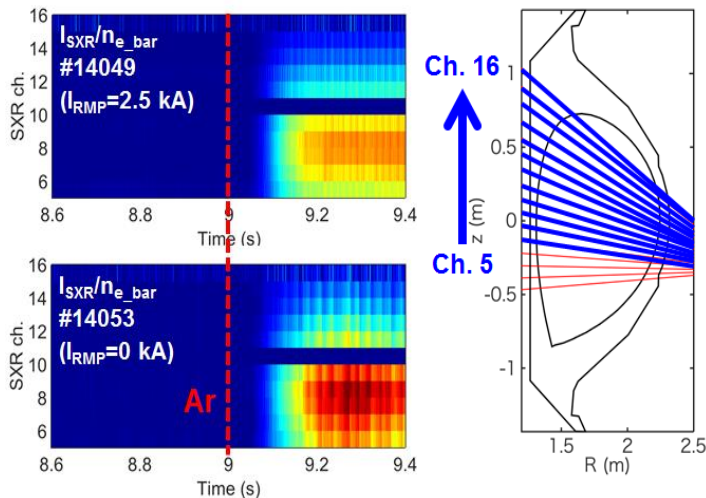
- Impurity transport study using 2 actuators **ECH** and **RMP** on KSTAR plasmas



Soft X-ray emission of various ECH heating positions in L-mode



Radial Ar density profiles at peak time for the (a) L-mode and (b) H-mode



Time evolutions of soft X-ray emission for $I_{RMP} = 2.5$ kA and 0 kA

(1) **ECH** effects on Ar transport

- L-mode : Hollow Ar density profile in the core by on-axis ECH
- H-mode : Flatten core Ar density profile by ECH

(2) **RMP** effects on Ar transport

- Core Ar emission was reduced by RMP

→ Both ECH and RMP can affect and reduce core Ar accumulation in KSTAR L and H-mode plasmas.