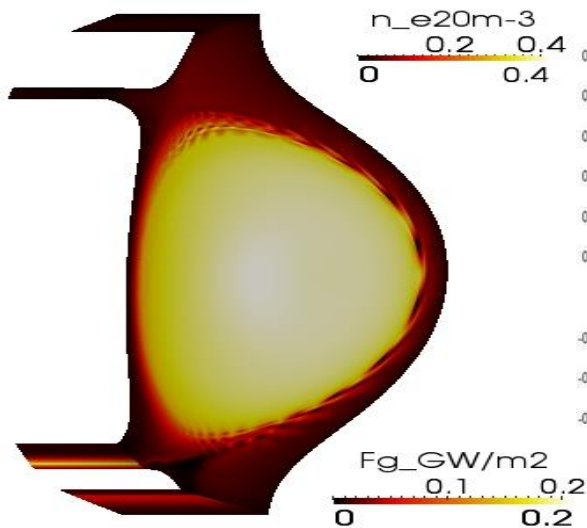
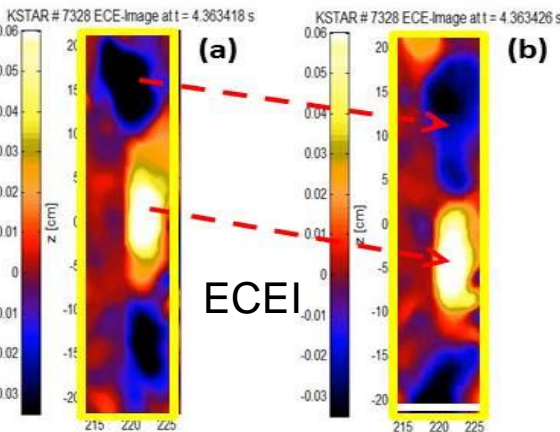


The non-linear MHD modelling of full ELM dynamics using JOREK code including toroidal rotation and two fluid diamagnetic effects for KSTAR pulse reproduced many ECEI diagnostic observations.

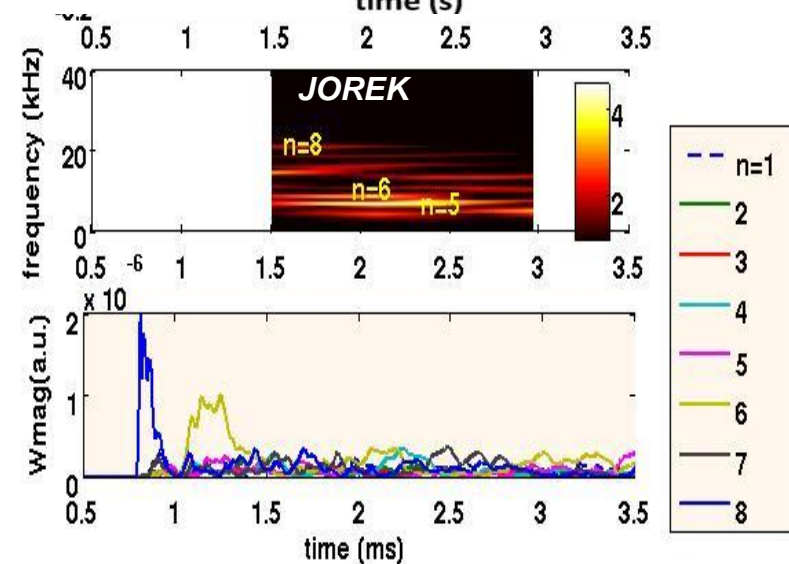
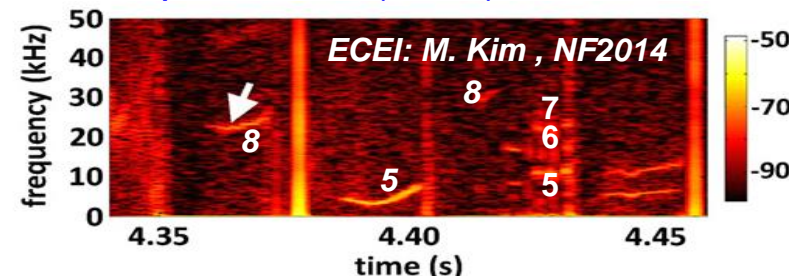
Density filaments in ELM crash.



Poloidal rotation ($V \sim 5 \text{ km/s}$) of δT_e ($N=8$) before ELM crash.



δT_e spectra in multi-harmonic multi-cycles modelling in inter-ELM phase are similar to experimental (ECEI).



Edge ergodisation during ELM.

