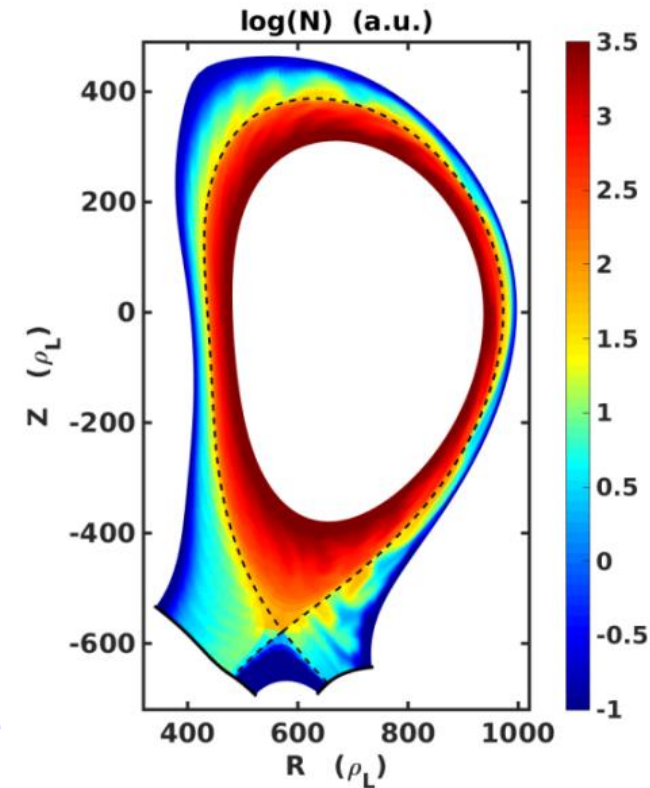


■ Progress in development of **2 complementary plasma edge modelling tools**:

- 1) **SOLEGE2D-EIRENE**, 2D mean-field code
 - multi-species simulations
 - perpendicular drifts
- 2) **TOKAM3X**, 3D global turbulence code
 - first fluid flux-driven 3D turbulent simulation in divertor geometry
 - coupling with EIRENE for kinetic neutrals

■ Intermediate approach proposed to allow **self-consistent description of transverse transport in mean-field simulations**:

- inspired from **fluid dynamics' Reynolds-Average Navier Stokes** approaches
- successful **transposal to interchange turbulence** model \Rightarrow first ever recovery of ballooning properties of transport in mean-field simulation



TOKAM3X simulation in diverted geometry (electron density field)