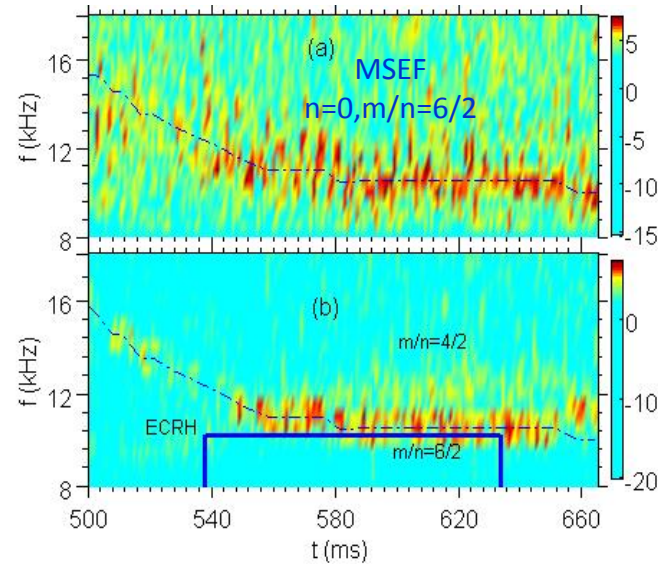
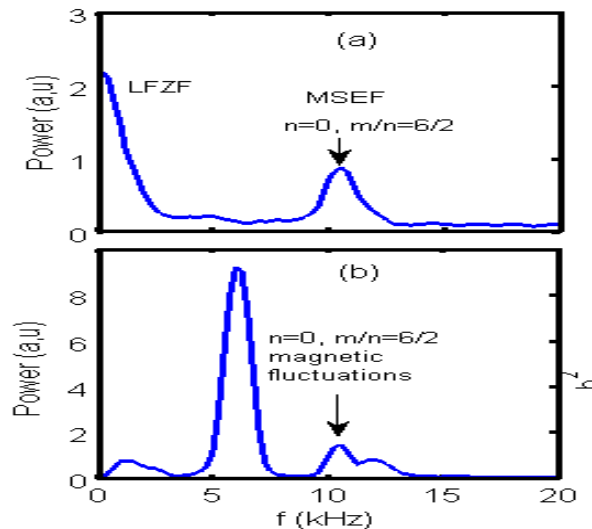


Synchronization of GAMs and Magnetic Fluctuations on HL-2A tokamak (EX/P7-27)



K. J. Zhao, Phys. Rev. Lett. 117 (2016), in press

- The fact that the zonal flow is synchronous with magnetic island actually suggests that the zonal flows see the islands, and respond to the island with sensitivity to the phase.
- The discovery of synchronization between GAMs and magnetic islands reveals a new, essential and prototypical process in nonlinear dynamics of high temperature plasmas.