

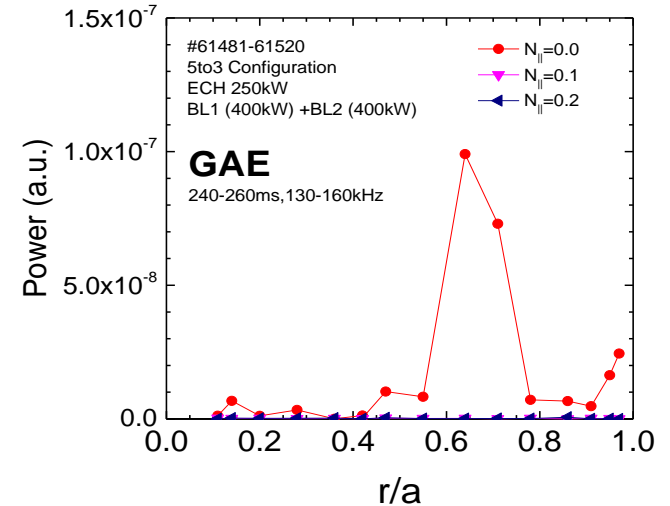


Suppression of Alfvén Eigenmodes by ECH/ECCD in Heliotron J

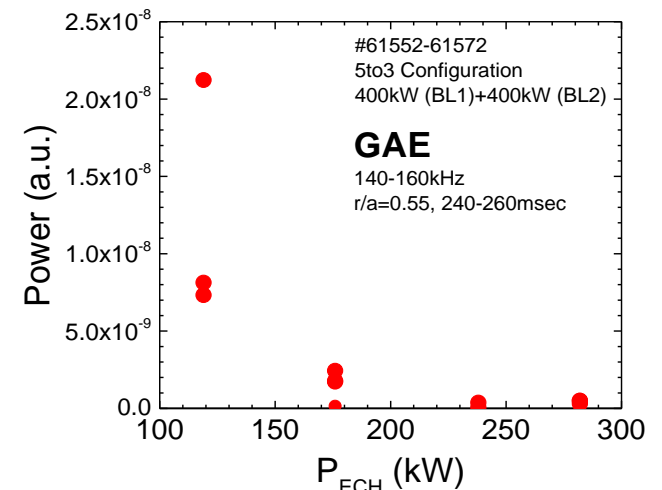
- High-energy-ion driven MHD instabilities such as GAE and EP have been stabilized by magnetic shear generated by ECCD
- ECH is also effective to suppress the modes.

K. Nagasaki, et al., EX P8-19

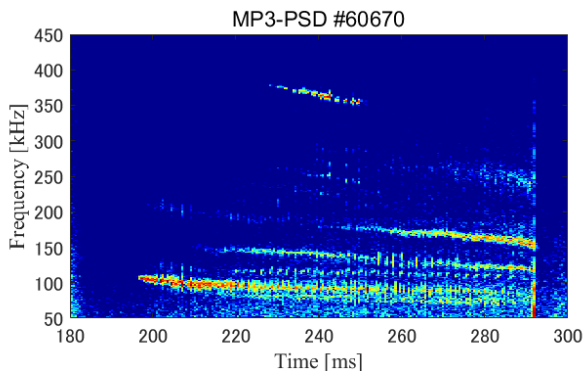
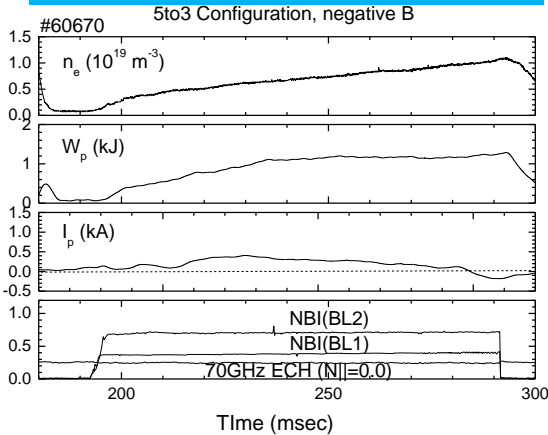
Radial mode structure



ECH power dependence



w/o ECCD ($I_{ECCD}=0.0$ kA)



w/ ECCD ($I_{ECCD}=0.5$ kA)

