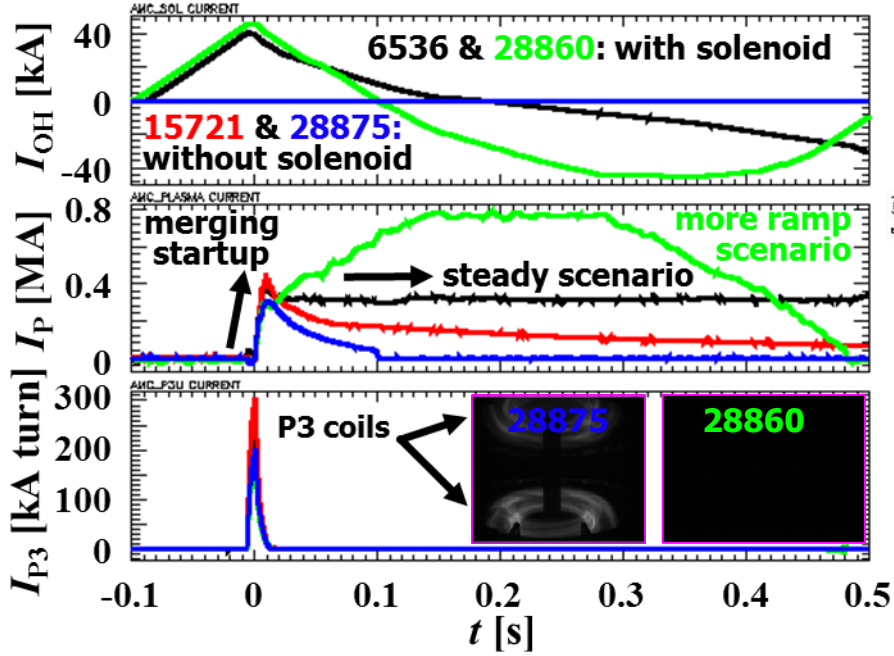
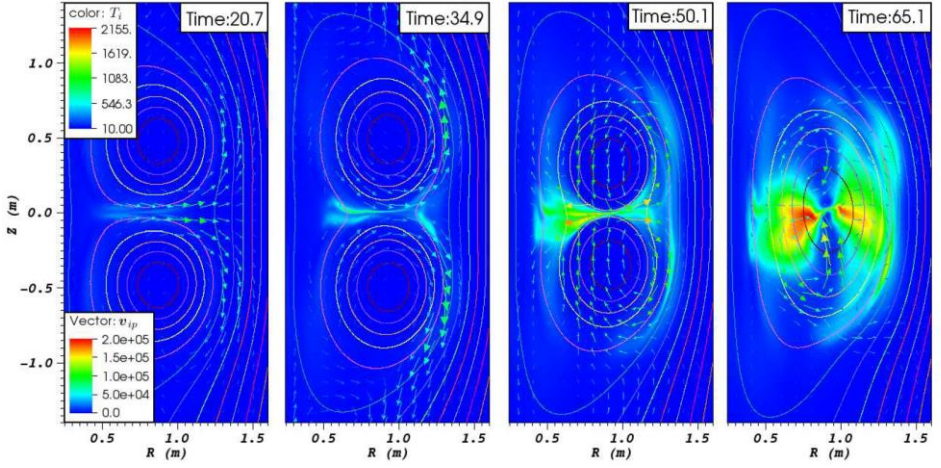


Typical waveform of a CS-less startup scenario by merging/compression method



P. Browning et al., PPCF 58, 014041 (2015)
 ~ Two fluid modeling of reconnection heating ~



H. Tanabe et al., 115, 215004, PRL, (2015)
 ~ Experimental results of reconnection heating ~

Ion heating by released $B_{rec}^2 (\propto B_p^2 \propto I_p^2 \propto I_{P3}^2)$

