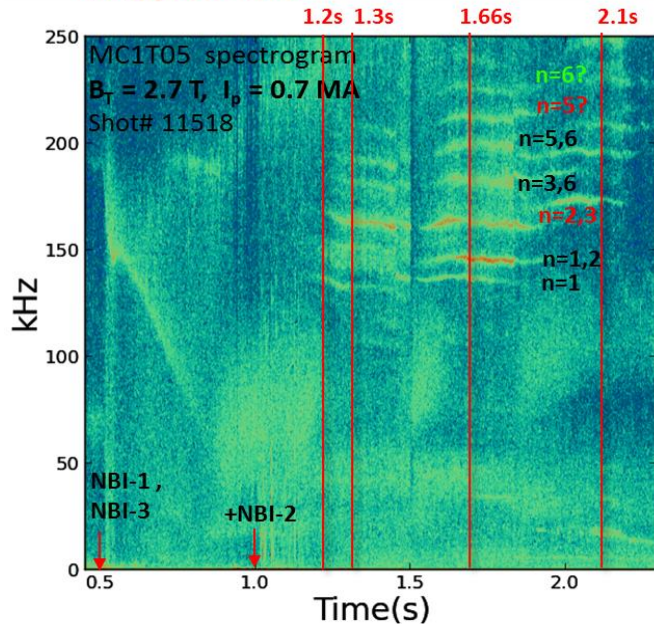


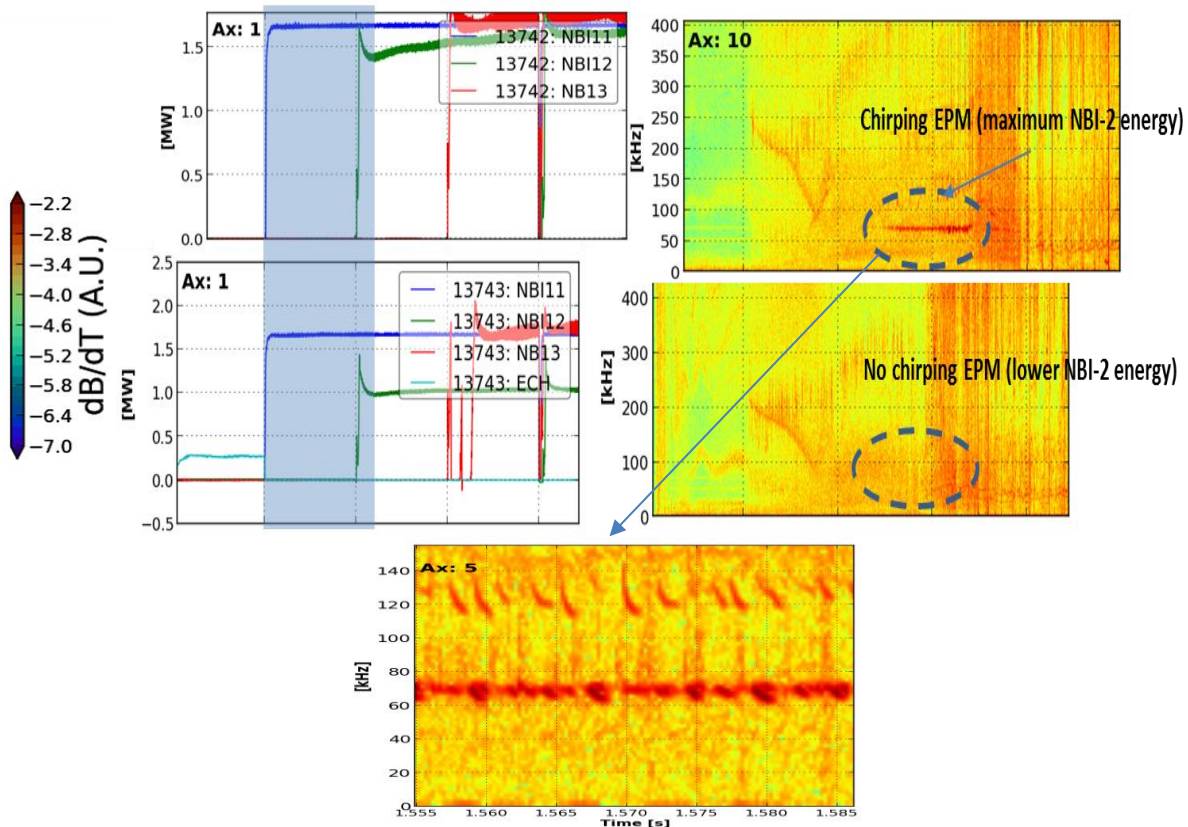
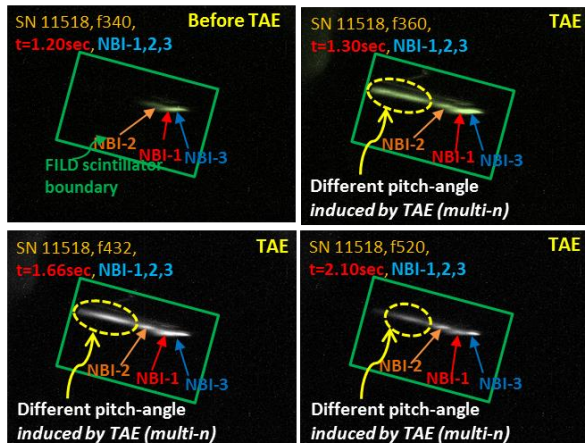
Experimental observations of beam-driven Alfvén eigenmodes in KSTAR (J. Kim et al.,) EX/P4-26

multiple-n TAEs



FILD scintillator images (beam-ion loss spots):

- Fast-ion loss associated with the TAEs (multiple n)
- Have not seen in other 'single AE' shots



- Multiple toroidal mode number ($n=1 - 6$) TAEs are excited in the discharge having high T_i and high neutron emission.
- Strong chirping activities are easily excited after NBI-3 turns on with maximum NBI-2 power (1.5 MW).
- These mode activities are easily driven under the high-performance discharges including advanced scenario attempts.