

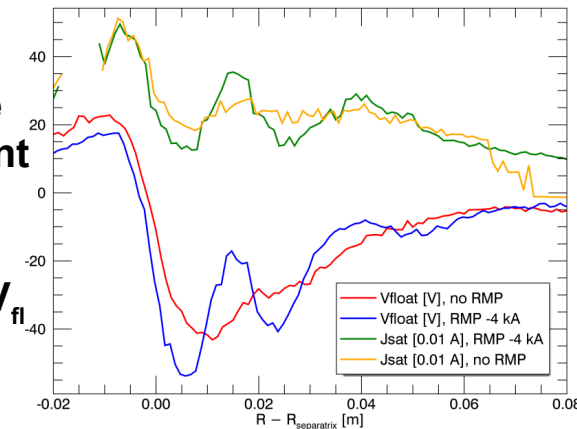
**The recent COMPASS activities were focused on:**

- **Edge and SOL physics** (*X-point height vs. L-H transition, GAM study, Pedestal scaling, RMP\**)
- **Core physics and quasi-coherent modes** (*Alfven Eigenmode oscillations, Runaway Elec.\**)
- **Plasma-surface interactions** (*num. & exp. studies of power deposition on LEs in support of ITER divertor monoblock shaping*)

*\*studies in support of MST1 devices*

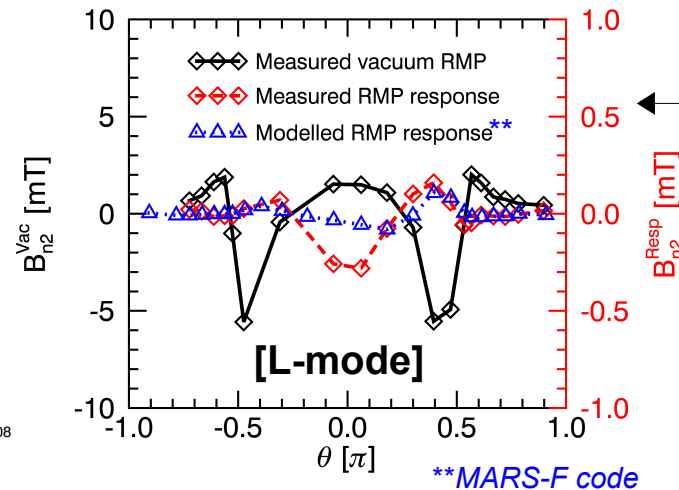
**Main results concerning RMP in COMPASS:**

**$V_{fl}$  and  $I_{sat}$  in outer divertor  
w/ and w/o RMP**



**RMP → clear splitting of the outer strike-point + correlation between  $J_{sat}$  &  $V_{fl}$  [L-mode]**

**Pol. profile of  $n=2$  RMP field**



**Measured RMP response field in opposite spatial phase than origin. perturb. + RMP increases ELM freq. in ohmic H-mode (via density pump-out)**