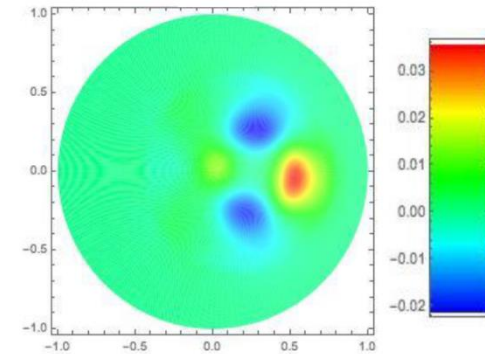
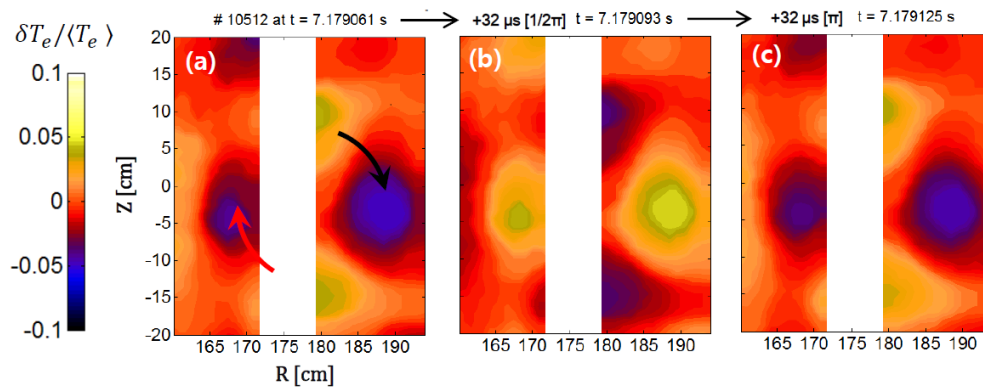
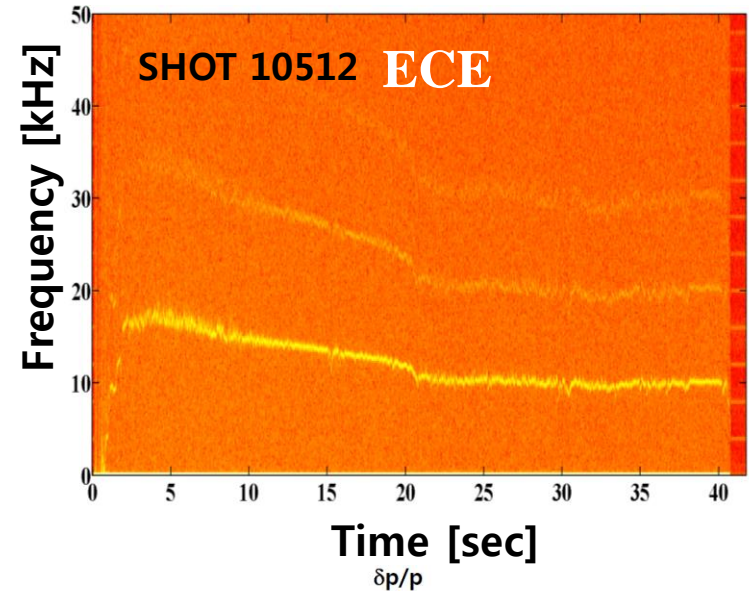
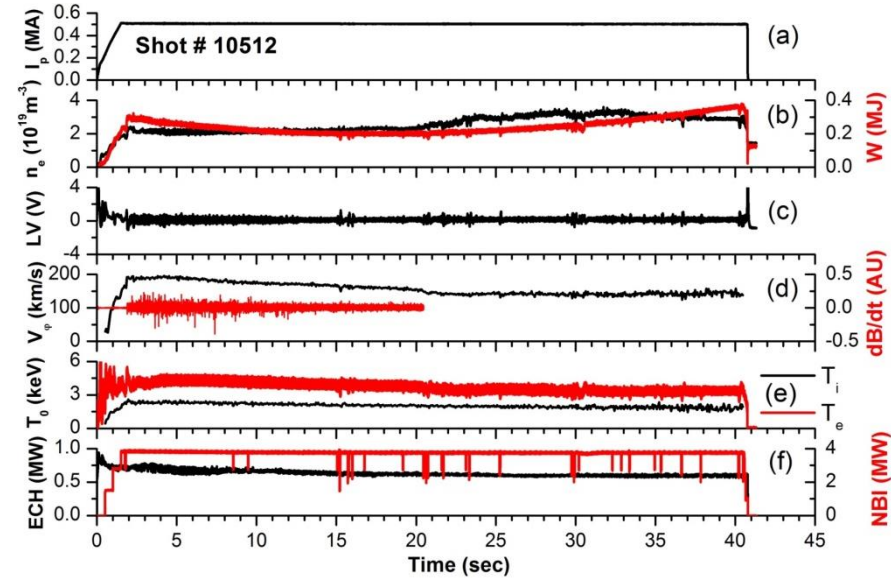


Long-lived Pressure-driven MHD Mode in KSTAR Plasmas (EX/P4-10)



- Highly coherent structures associated with a saturated extremely long-lived MHD instability have been observed in KSTAR for the first time.
- They persist essentially unchanged for the full duration of a discharge, much longer than any dynamical or dissipative time scales in the system.
- The measured ECE image during the time long-lived pressure-driven mode exists showed a strong ballooning character and it is confirmed by nonlinear numerical simulations using the CTD code.