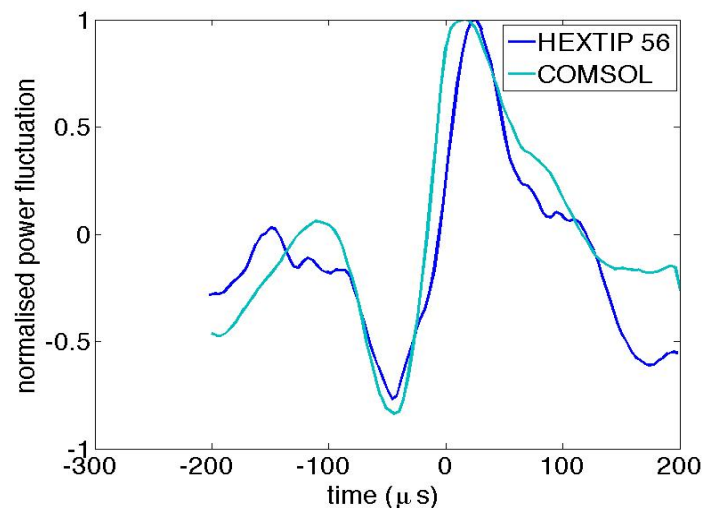
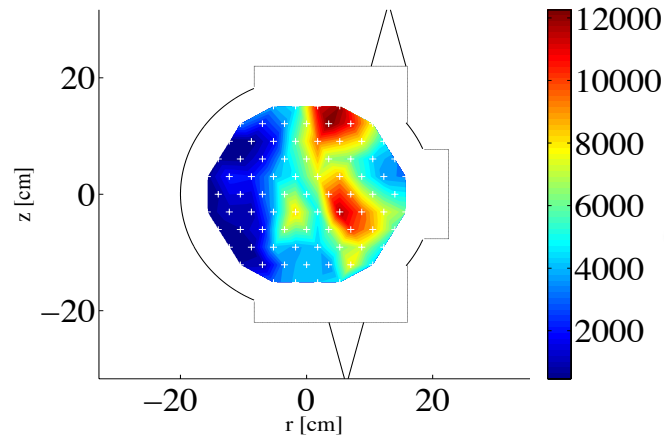


RF scattering by Edge Turbulence

shot: 66429, correlation between HEXTIP and RF out



- ☐ Scattering by blobs in SOL may broaden EC beams; thus, requiring more power to stabilize NTMs in ITER.
- ☐ TORPEX transmission diagnostic measures RF scattering correlated with SOL-like blobs.
- ☐ Full-wave 2D COMSOL modeling successfully simulates conditional averaged sampled RF scattering measurements using time-resolved 2D *in situ* density measurements as inputs.
- ☐ TCV X3 transmission diagnostic poised to measure beam broadening at ITER relevant dimensions.