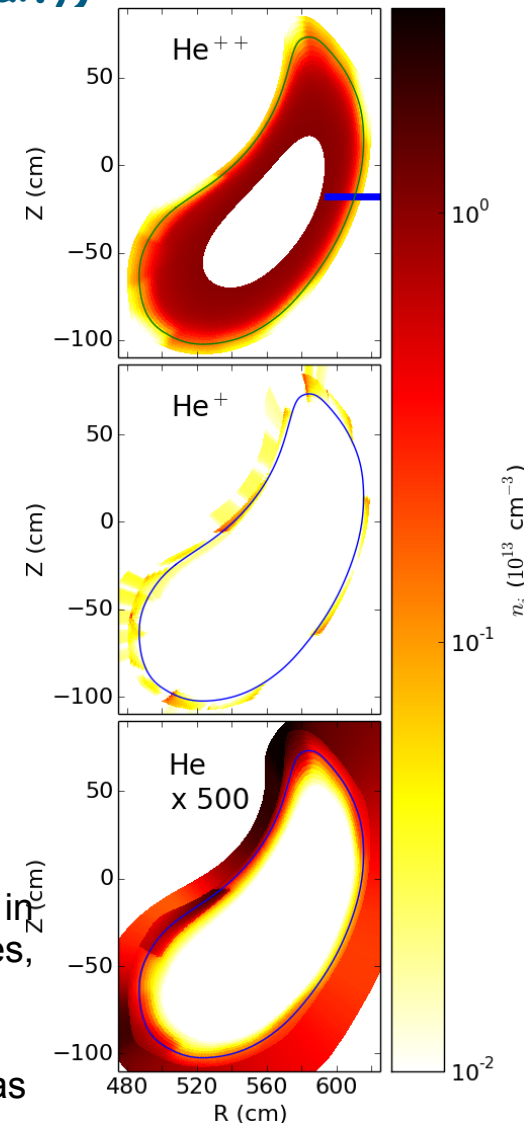
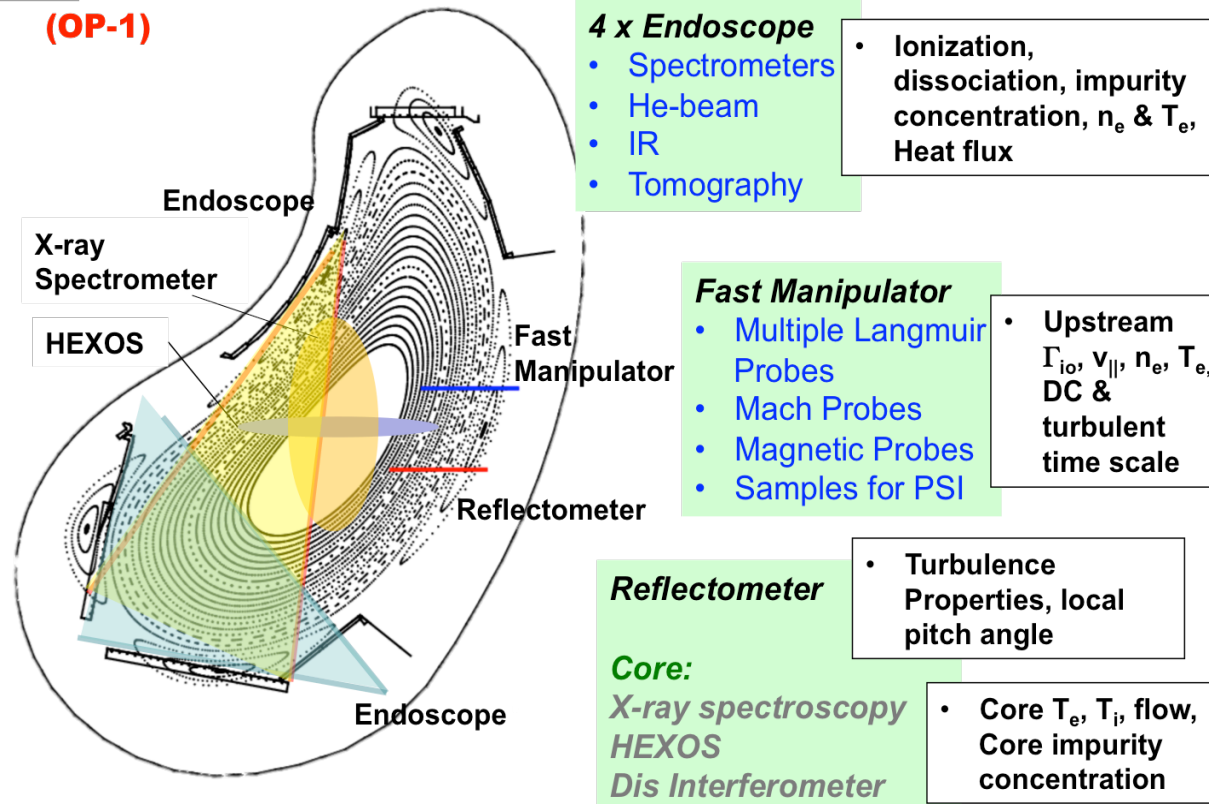


# Diagnostic set-up and modelling for investigation of synergy between 3D edge physics and plasma-wall interactions on Wendelstein 7-X (Y. Liang, et al.,)

(OP-1)



- PWI research in the divertor region require measurements of the temperature in the plasma edge and of the concentration and distribution of different impurities, in combination with modelling of impurity transport.
- A set of edge diagnostics has been developed for the upcoming W7-X experiments and the EMC3-EIRENE code is being extended to helium plasmas for the OP1.1 phase.