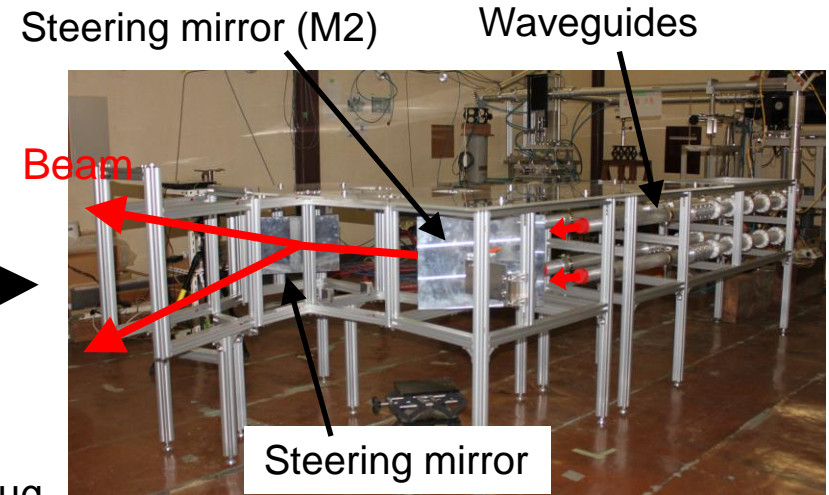
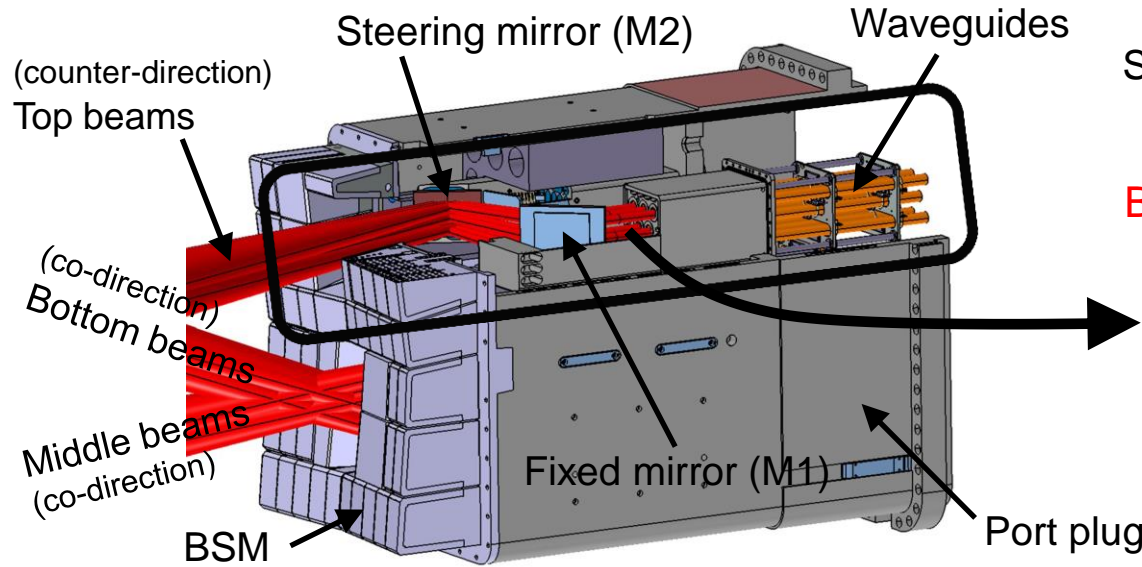


# Summary

– Development of ITER Poloidal Steering Equatorial EC Launcher enhancing ECCD performance –



Millimeter(mm)-wave beam design of poloidal steering EL optimized mm-wave transmission capability accomplished !

Mock-up test to validate the design

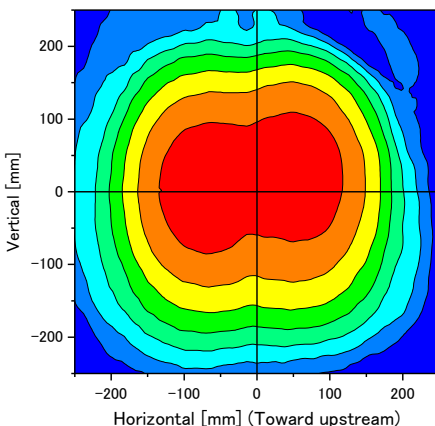
- Steering & focusing mirror
  - Four waveguides placed in each corner
- Simulating 8-beam envelope propagation

Poloidal steering EL design

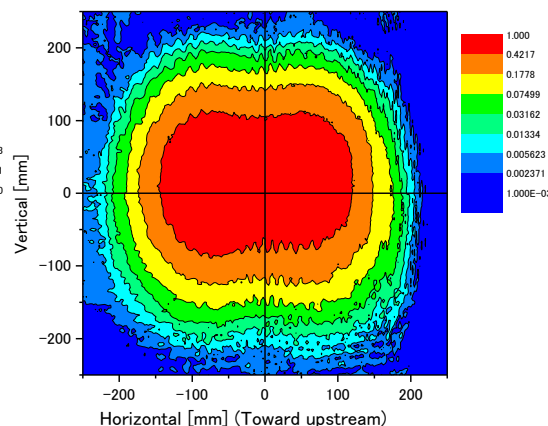
- Transmission efficiency of 97~99%
- Heat flux on mirrors < tolerable level

MM-wave mock-up test

- Calculated/Measured radius : 220mm/223mm  
→ Good agreement (simulated 8 beams)
- Steering performance (+/-10°) confirmed



Calculation (design)



Measurement (low power)