

23rd WiN Global Annual Conference

**24–28 August 2015
Vienna, Austria**

Women in Nuclear meet Atoms for Peace

U.S. Women in Nuclear

Marilyn Kray

Vice President

Exelon Generation





- Membership exceeds 7,000
 - 67 active local chapters
 - Over 36,000 volunteer hours in professional development, networking and public outreach
- Launched 5-year strategic planning initiative—WIN 2020
- Formed partnership with Nuclear Matters
- Enhanced communications
 - Expanded social media
 - Twitter—over 4,000 followers (60% increase in reach)
 - Facebook—over 1,300 page likes (67% increase in reach)
 - Quarterly newsletter
- New initiative to support women in operations careers



National Conference in Austin, TX



Women in Nuclear meet Atoms for Peace

Nuclear developments



- Sustained strong performance of the U.S. nuclear fleet
- Continued economic pressures on nuclear generating assets
- New plant construction moves forward
- Implementation of post-Fukushima safety enhancements underway (FLEX)
- Used fuel management outlook is stable

Continuous Improvement Drives Value

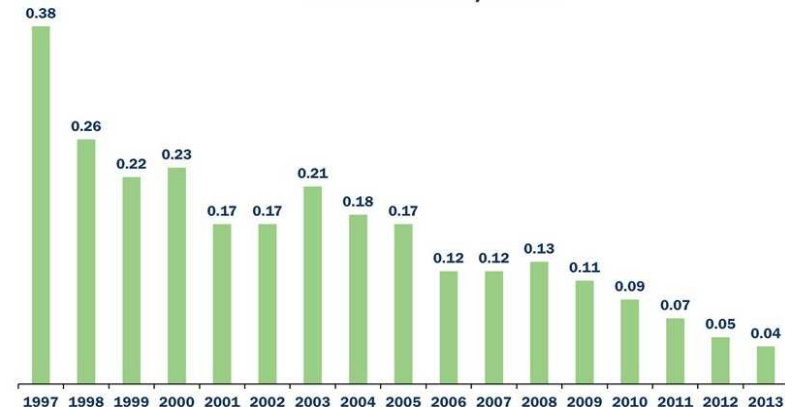
The U.S. industry remains focused on actions that enhance operational value

- Safety culture: nuclear, industrial, radiological and environmental
- Reliability improvements: disciplined approach to making investments
- Focus on operations: online, refueling, seasonal readiness
- Benchmarking and sharing industry best practices

Disciplined decision-making and a focus on safety, efficiency and reliability will preserve and enhance nuclear asset values

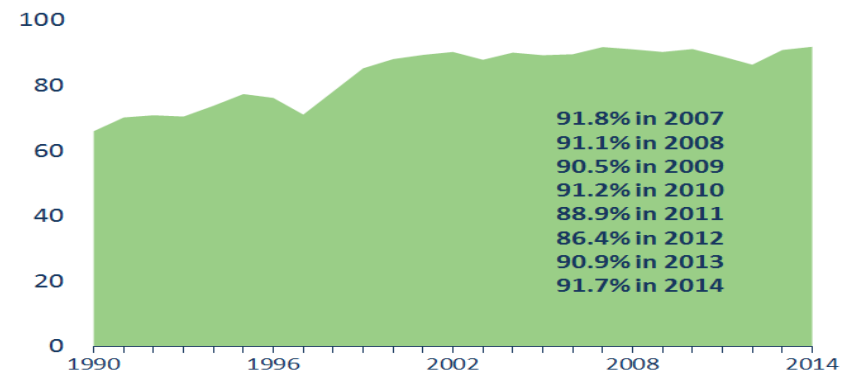
U.S. Nuclear Industrial Safety Accident Rate

One-Year Industry Values



Sustained Reliability and Productivity

U.S. Nuclear Plant Capacity Factor



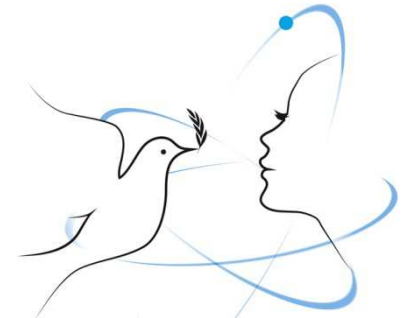
Source: Energy Information Administration (EIA)

Watts Bar 2 Nears Completion



Women in Nuclear meet Atoms for Peace

Progress at Vogtle, Summer



Women in Nuclear meet Atoms for Peace

Progress at Vogtle, Summer



Women in Nuclear meet Atoms for Peace

FLEX Strategy Enhances Safety



- FLEX provides additional layer of protection against extreme, unexpected scenarios that are beyond the plants' design basis
- Focus on maintaining key safety functions
- Each nuclear plant site maintains backup portable safety equipment, shares it industrywide if needed
- National response centers opened in 2014 in Memphis and Phoenix



Emergency equipment is pre-staged on truck flatbeds at national centers, ready to be shipped by truck or aircraft

National Response Centers Open in 2014



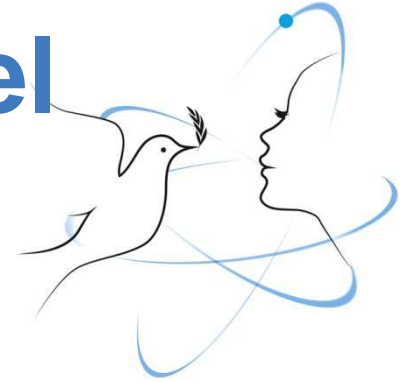
Five full sets of emergency backup equipment is stored at the national centers



Emergency equipment is equipped with color-coded electrical connections for “plug and play” installation

Women in Nuclear meet Atoms for Peace

Stable Outlook for Used Fuel Management



- U.S. courts ordered the Department of Energy (DOE) to reset Nuclear Waste Fund fee to zero = \$750 million annual savings to U.S. rate payers
- U.S. courts ordered the Nuclear Regulatory Commission and DOE to resume Yucca Mountain licensing (geologic repository)
- Tangible interest in developing interim storage facility



Used fuel storage at interim facility



Thank you!



IAEA
International Atomic Energy Agency