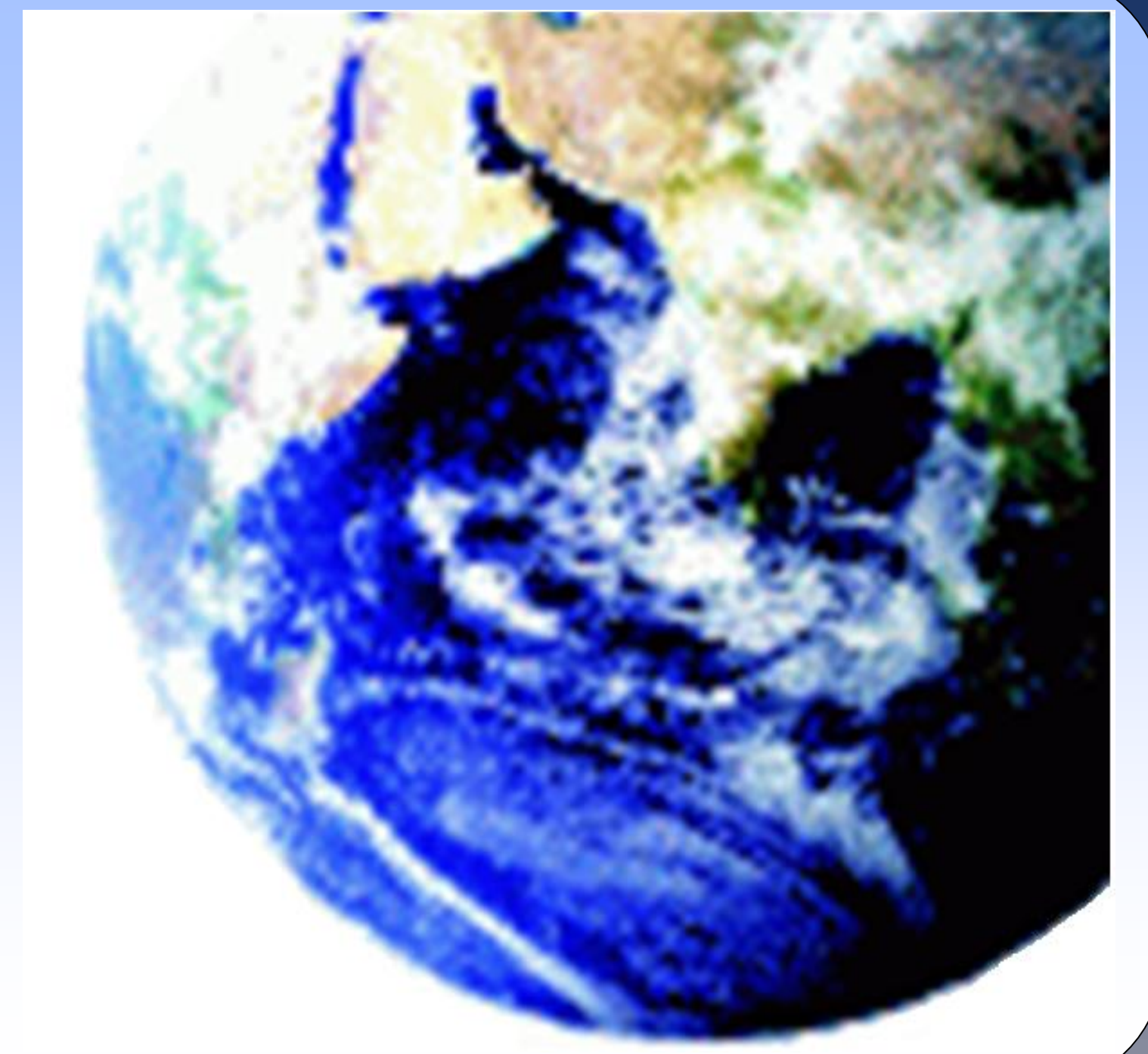




How do we communicate about nuclear energy to the public



Social events

1. step, we make a stand



2. step, we approach and invite visitors



3. step, asking people to take Nuclear Quiz



4. step, communication during filling the quiz



5. step, a small present from WIN

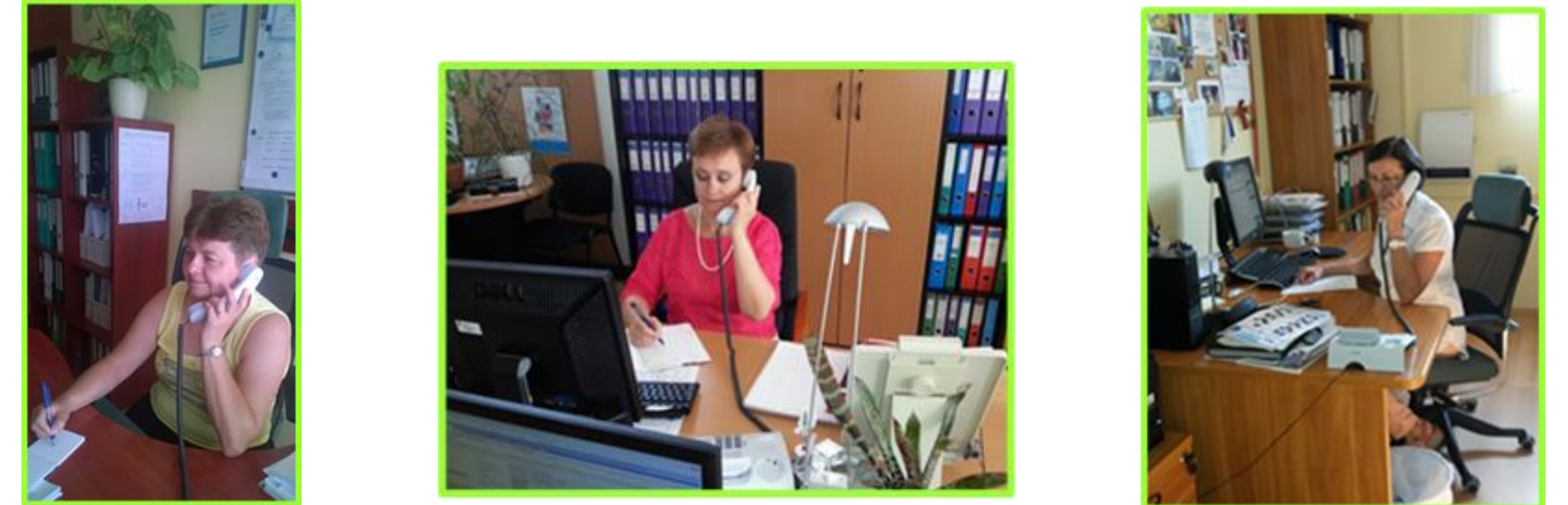


Advantages of using questionnaire in communication on social events

- Helps to start the dialog
- Helps in communication
- Shows the level of dialog partner 's knowledge about nuclear energy
- Shows the room to improve, what do we have to explain to dialog partner

Visiting schools

1. step, contact with school, make an appointment



2. step, visiting the school, making a presentation



3. step, asking students to take Nuclear Quiz



4. step, checking the result



5. step, a small present from WIN



Advantages of using questionnaire in communication in schools

- Helps to check the effectiveness of the presentation
- Helps in communication
- Shows the level of students' knowledge about nuclear energy
- Shows the room to improve, what do we have to explain to the students