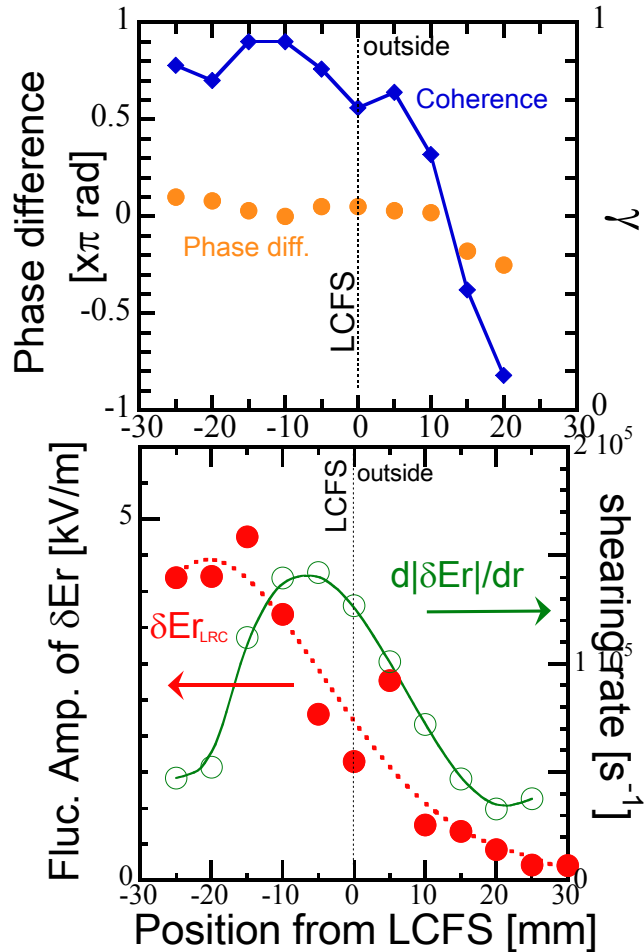




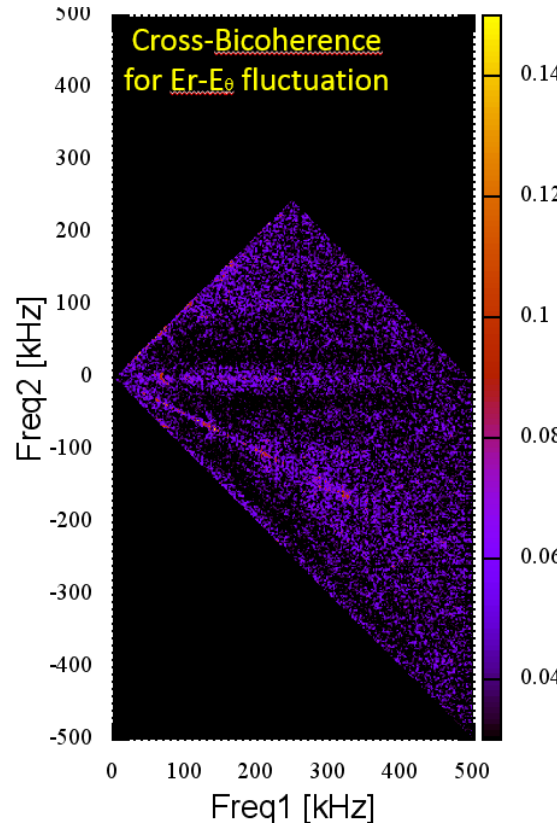
Observation of a Toroidally Symmetrical Electric Field Fluctuation with Radially Elongated Structure in Heliotron J

S. OHSHIMA, et al., EX/P4-26

➤ Radial structure of Toroidally Symmetric Field Fluctuation

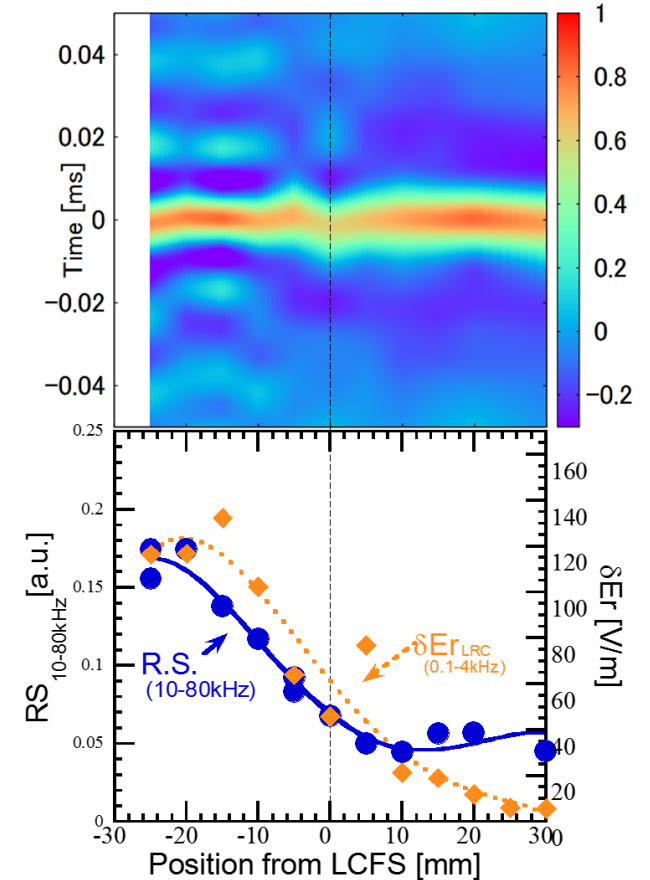


➤ Nonlinear Coupling



Nonlinear coupling exists in the frequency range corresponding to the symmetric fluctuation.

➤ Change of Turbulence Characteristics at the Boundary of LCFS



Turbulence shows different characteristics at the boundary of LCFS, which should also have influences on the behaviours of Reynolds stress.

No radial phase shift, but steep gradient of δE_r generates velocity shear layer.