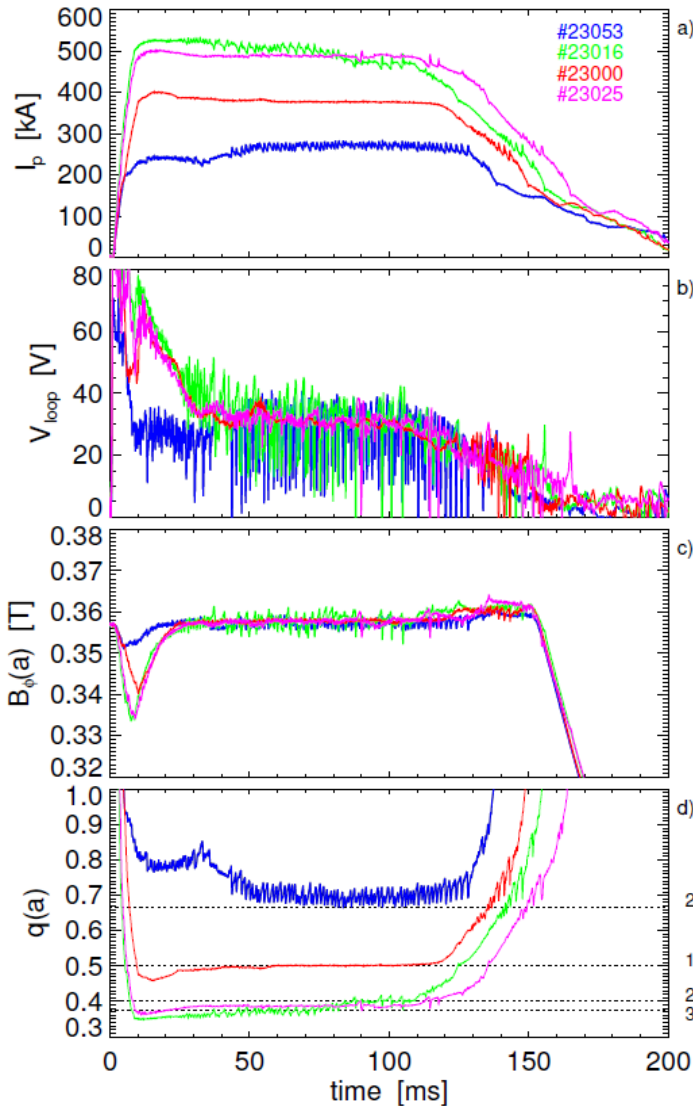
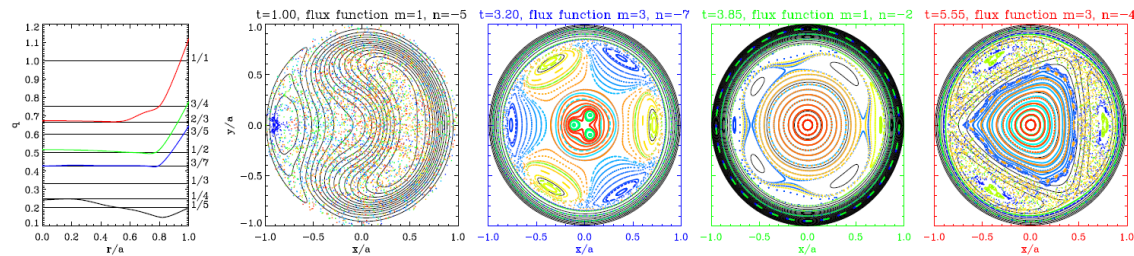


## RFX-mod operates as RFP, Tokamak and Ultralow- $q$ , $q(a) < 1$



- ULq are extremely sensitive to  $q(a)$ : either quiet or with a single saturated mode ( $m \geq 1$ ) or sawtoothing plasmas occur
- Experimental results in agreement with non-linear 3D modeling. Importance of magnetic reconnection



- Single helicities emerge within the magnetic spectrum with associated core thermal structures
- Easy access to high density regimes  $n_e/n_G > 1$
- No mode wall-locking observed
- No double resonant  $m=1$  mode observed (linearly unstable, non-linearly stabilized)

