

Experiments support the M3D simulation prediction (*) of
 “ low $n=1,2$ toroidal comps. dominance in Quasi-Interchange crash environment”
 → leading to simultaneous control of QI-crash and 2/1 TM locking avoidance

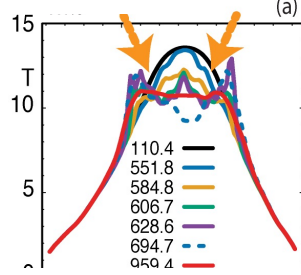
Simulation
Prediction

Exp. Consistency

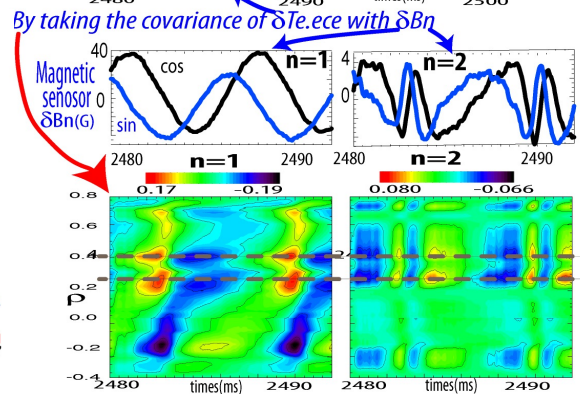
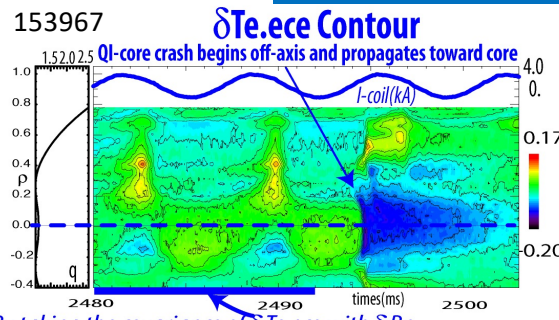
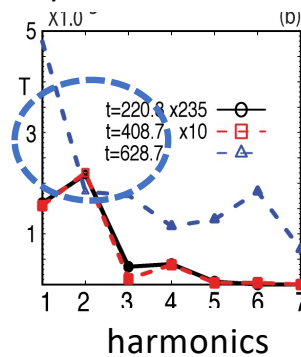
Simultaneous
QI-crash and LM Control

153974

Off-axis crash first

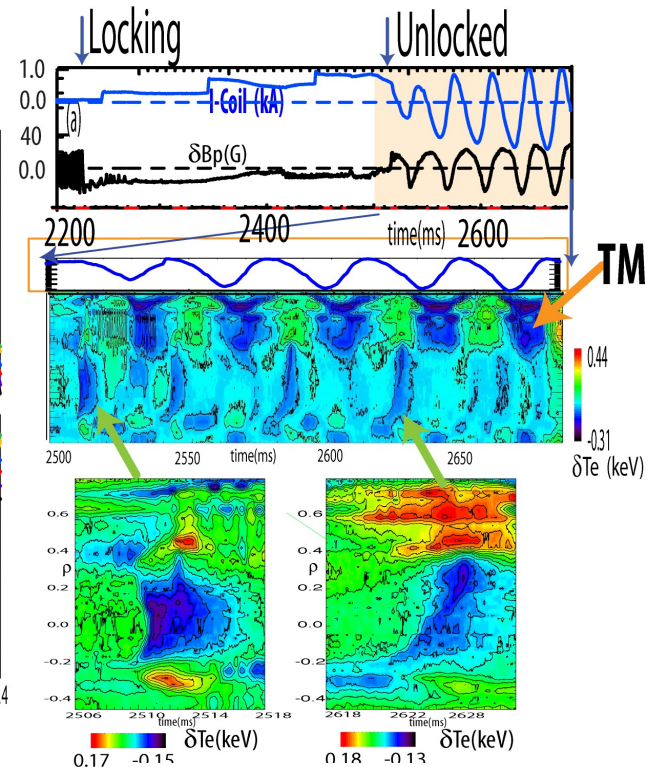
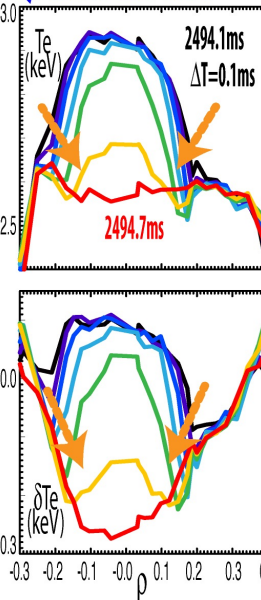


• Dominantly non-linear $n=1,2$



$\delta Te.n$ decomposition

QI-driven core crash



* Submitted to PoP 2020 By L. Sugiyama

EX/P1-9 Okabayashi, Sugiyama et al.,