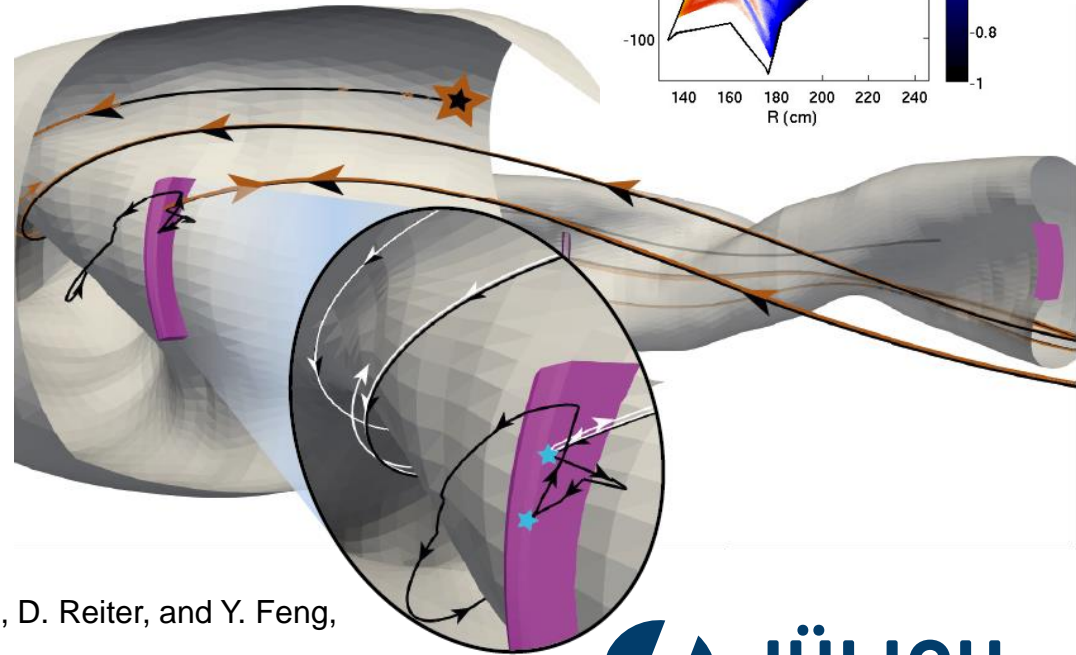
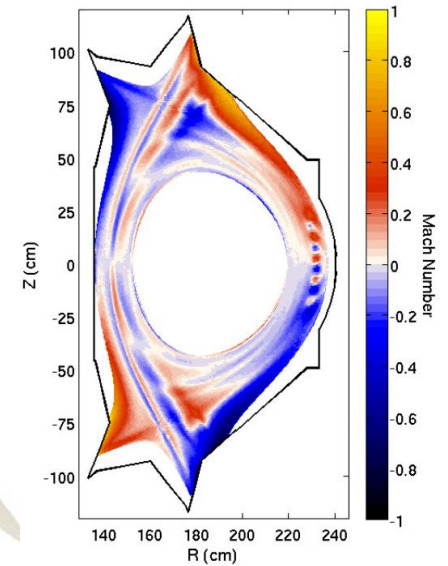
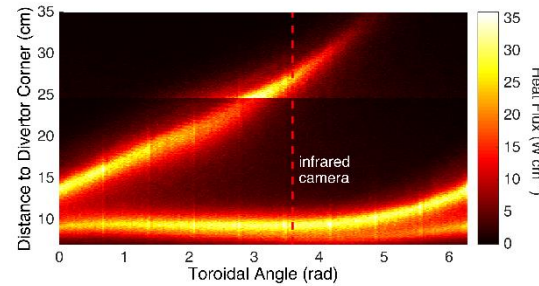


# Plasma–surface related three-dimensional Modeling Results for Wendelstein 7-X and EAST

## EMC3-EIRENE modeling activities

- Effect of Lower Hybrid Wave-induced magnetic perturbations in EAST on plasma transport
- Conceptional study of a divertor manipulator for Wendelstein 7-X
- Numerical estimates of effective charge state considering impurities
- Synthetic helium beam diagnostics
- Enhanced kinetic ion transport in EIRENE applied on Wendelstein 7-X



F. Schluck, M. Rack, S. Xu, W. Zholobenko, J. Cosfeld, D. Reiter, and Y. Feng,  
IAEA-TH/P1-5, **Poster 608** (23<sup>rd</sup> Oct, 8:30 – 12:30)