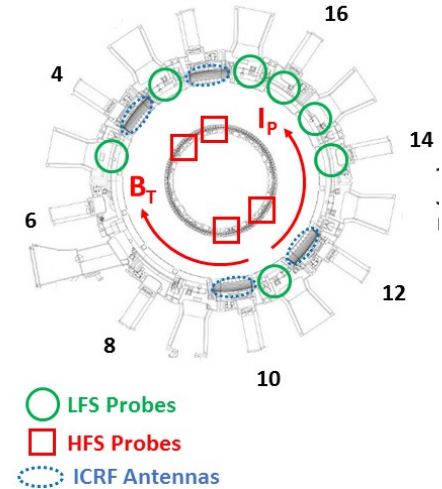
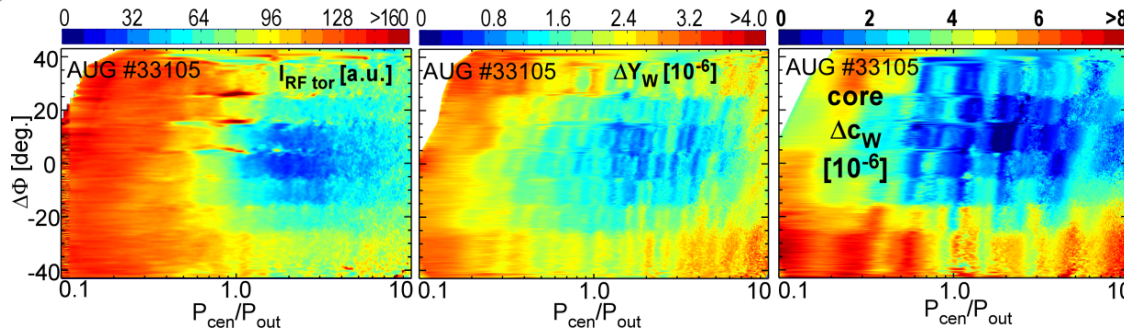
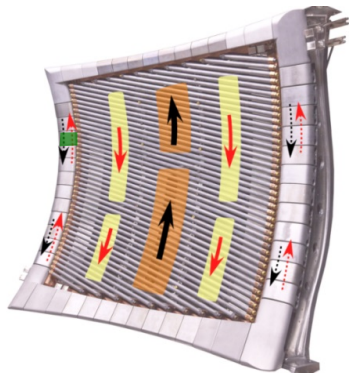


3-strap antenna: compatibility with W-wall, consistent with modelling

Improved B-dot + ICE diagnostics

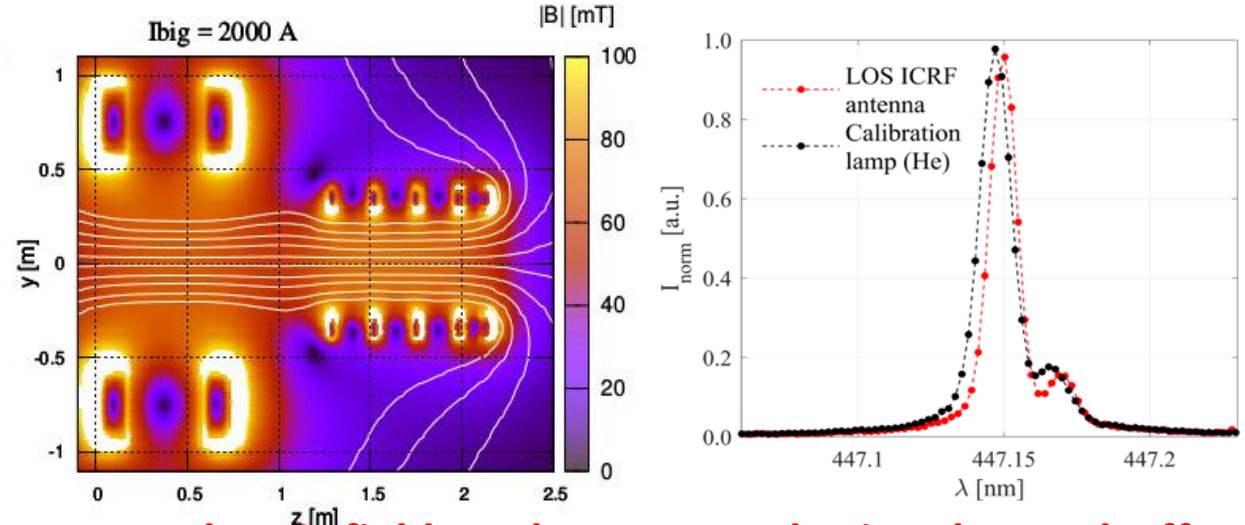
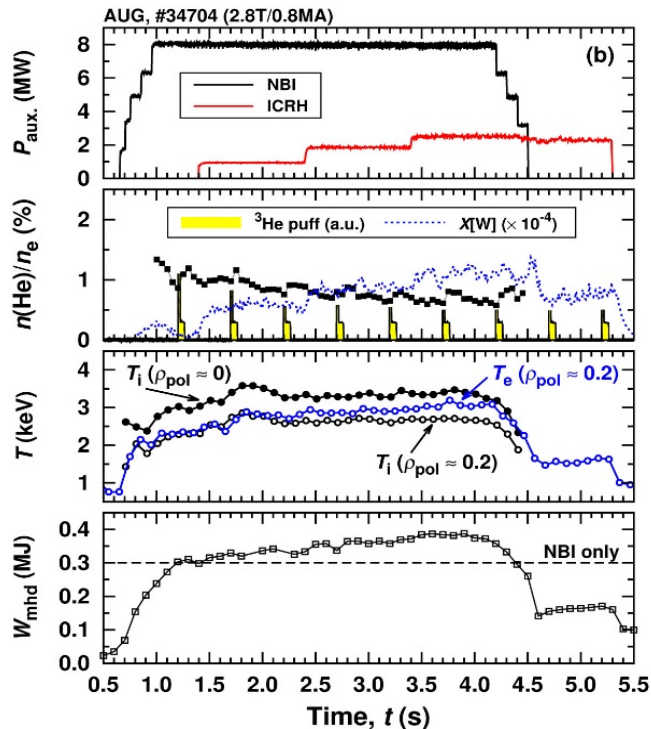
Optimal conditions: $P_{\text{cen}}/P_{\text{out}} = 2/1$; $\Delta\phi = 180^\circ$



3-ion scheme leads to very energetic ions

off-axis deposition reduces ^3He ion energy; they are then better confined in AUG

Development of optical diagnostics on IShTAR to measure rectified electric field close to ICRF antennas



Electric field can be measured using the Stark Effect