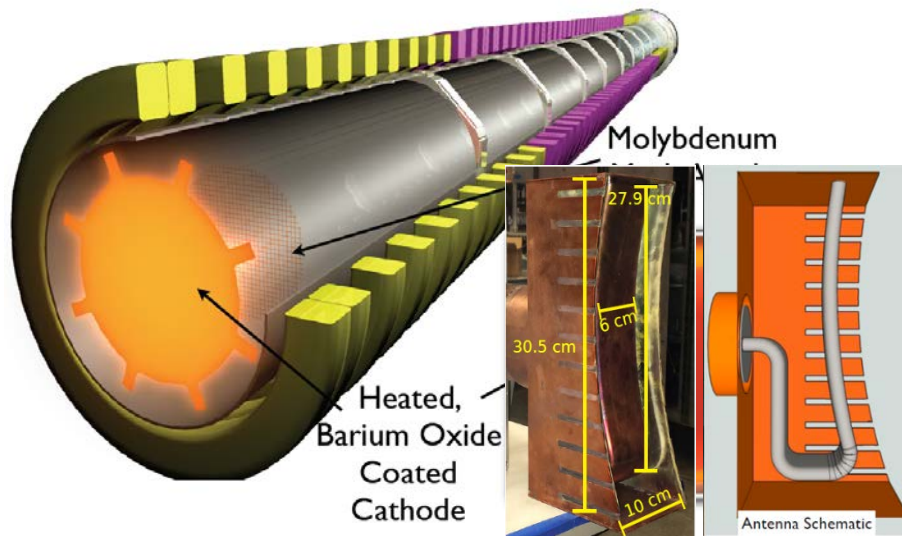
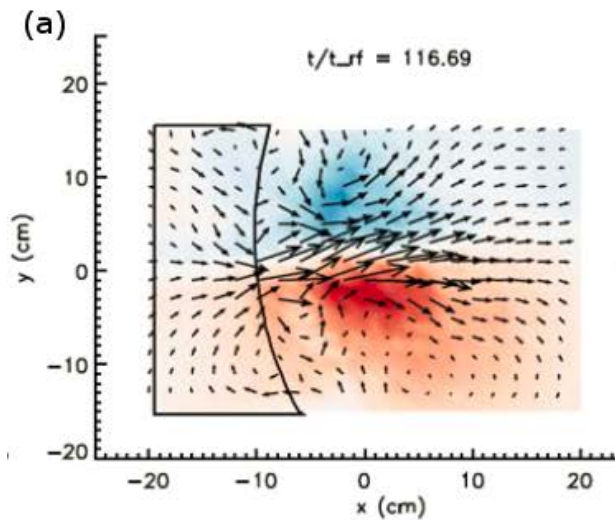


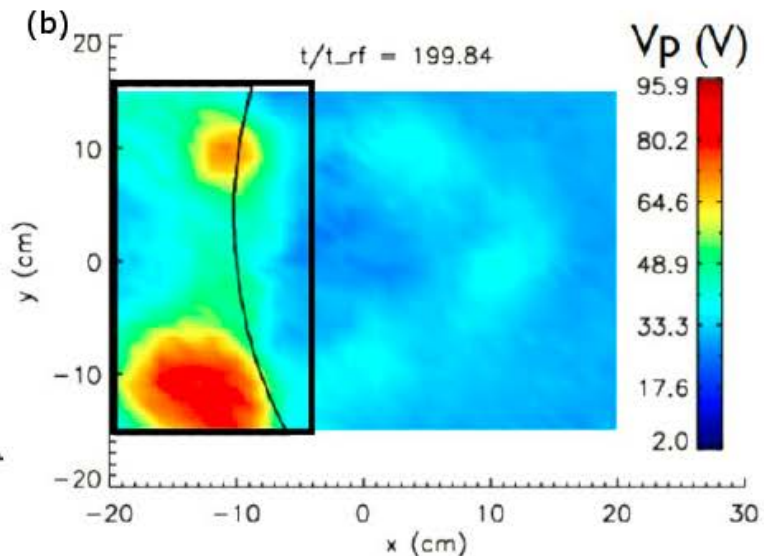
Fast wave experiments in LAPD in support of fusion



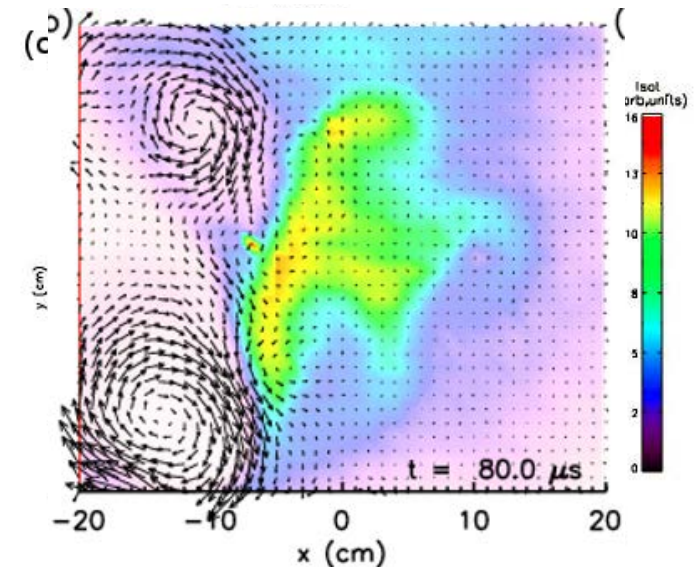
- LAPD plasma parameters similar to tokamak SOL
- 150 kW RF driving single strap antenna
- Evidence of strong rectified potentials ($> 20 T_e$), sputtering, convective cells, density modifications



Detailed wave measurements



Localized rectified potential



Convective cells and density modifications