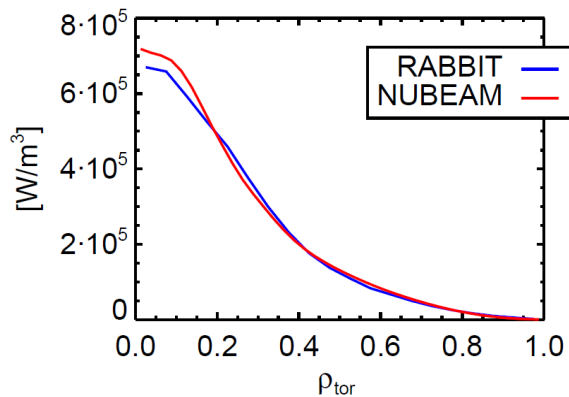
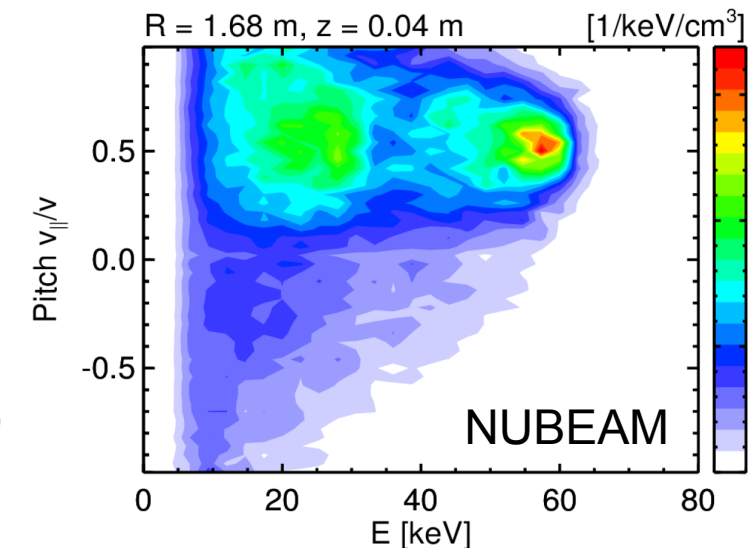
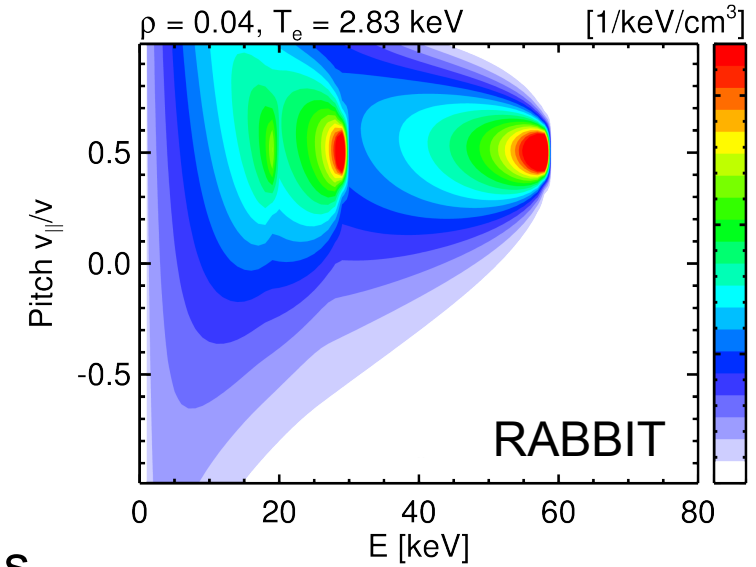


M. Weiland et al.: Real-time simulation of the NBI fast-ion distribution

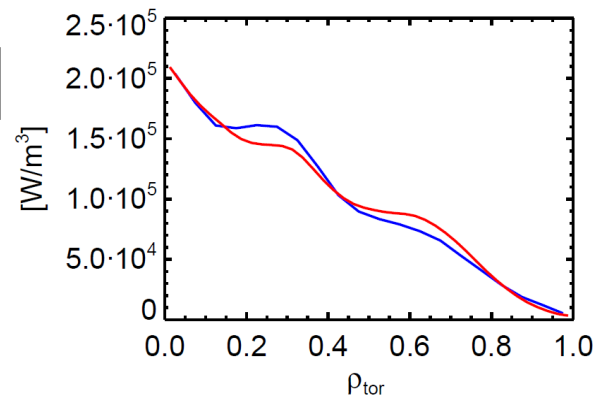


New RABBIT code:

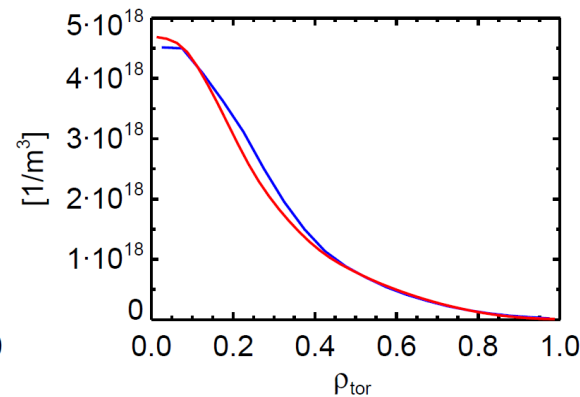
- Simplified beam geometry, orbit average of beam deposition, analytic solution of Fokker-Planck equation
- ~20 ms per time-step, ~1000x faster than NUBEAM but still good agreement
- used as input for transport and equilibrium codes, or for direct comparison with experimental data (e.g. neutrons)
- e.g. in real-time, for fast intershot analysis or databases/parameter scans



(a) Heating to ions



(b) Heating to electrons



(c) Fast-ion density

contour plot including
colorbar axis label

