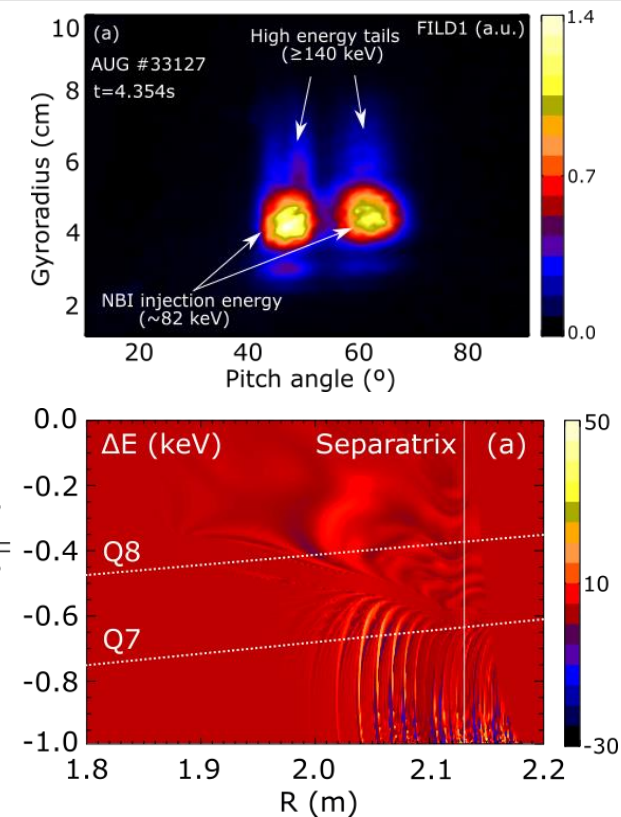
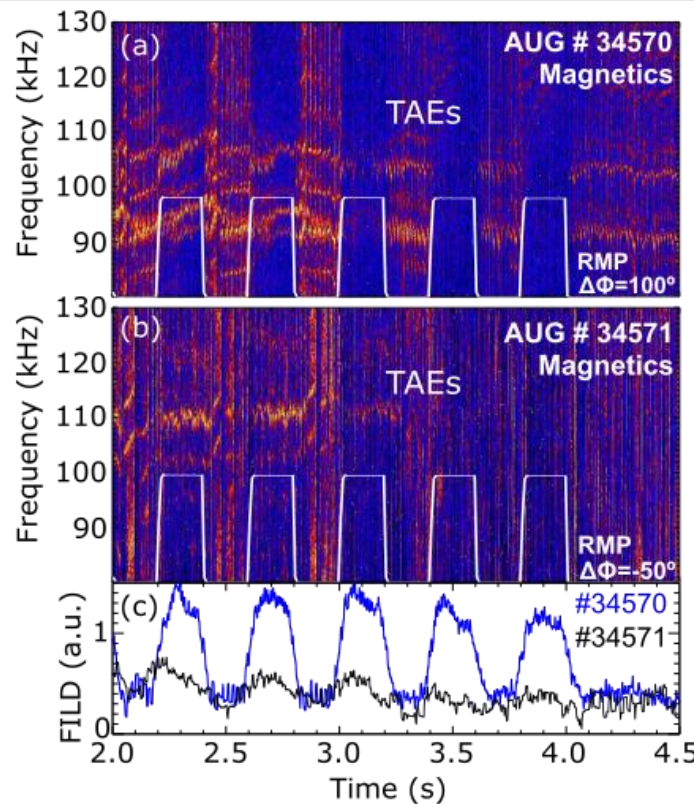
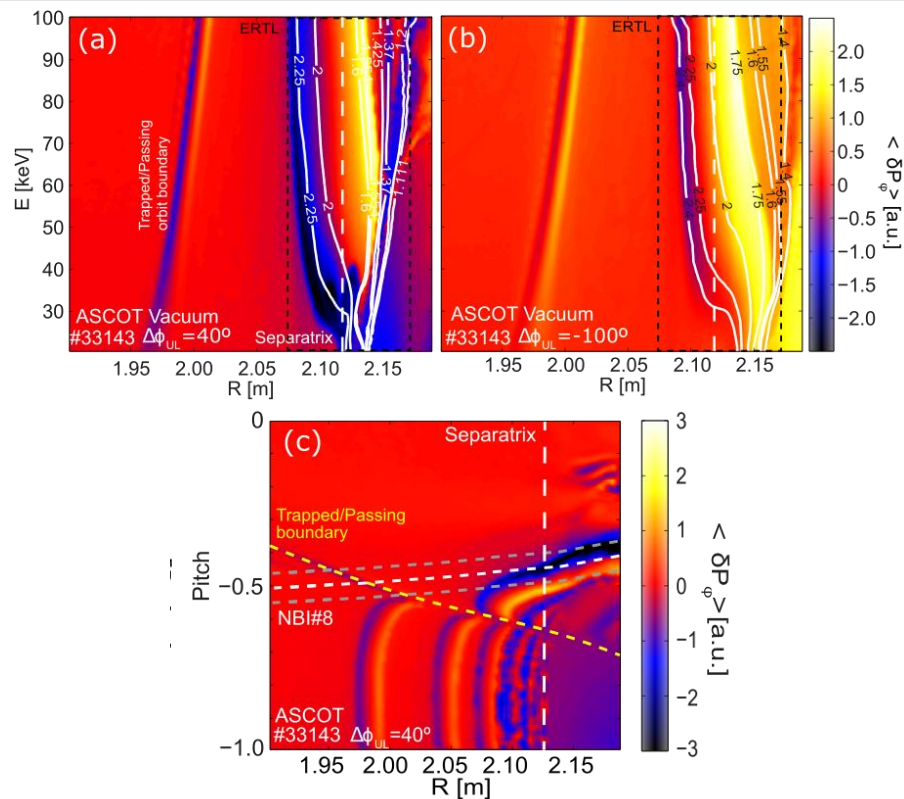


Impact of edge resonant transport layer on fast-ion confinement in the ASDEX Upgrade tokamak



- Resonances between fast-ions and 3D perturbations: Edge resonant transport layer (ERTL)
- FI radial transport determined by differential phase of MP coils and toroidal phase with respect to NBI
- Use MPs to modify localized phase-space volumes of the FI distribution: impact on NBI-driven AE stability
- Acceleration and loss of NB-ions during ELMs: resonant structures in analogy with ERTL due to MPs